

WAAS CH 69306 W33A	APP CRS 327°	Rwy Idg TDZE Apt Elev	8502 219 219
--	------------------------	-----------------------------	---

RNAV (GPS) RWY 33

MOBILE RGNL (MOB)

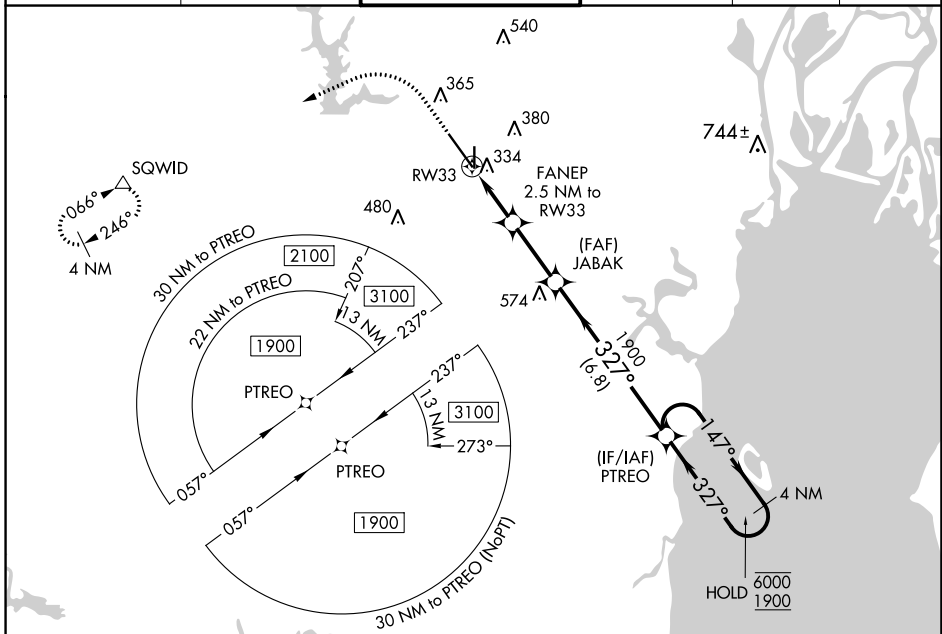
RNP APCH - GPS.

ASR For uncompensated Baro-VNAV systems, LNAV/VNAV NA below -4°C or above 54°C. For inop ALS, increase LNAV/VNAV all Cots visibility to RVR 4500.
* RVR 1800 authorized with use of FD or AP or HUD to DA.



MISSED APPROACH: Climb to 700 then climbing left turn to 2000 direct SQWID and hold.

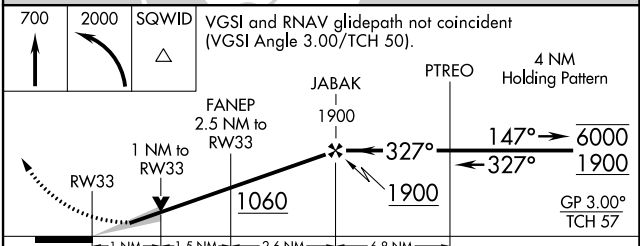
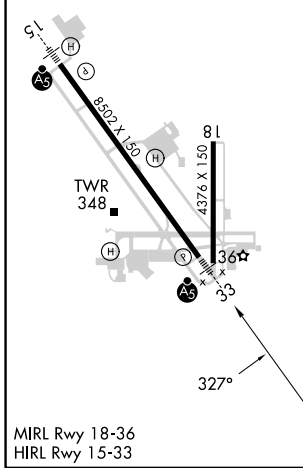
ATIS 124.75 257.85	MOBILE APP CON ★ 118.5 269.3	MOBILE TOWER ★ 118.3 (CTAF) 239.0	GND CON 121.9 348.6	CLNC DEL 119.85	UNICOM 122.95
------------------------------	--	---	-------------------------------	---------------------------	-------------------------



SE-4, 05 SEP 2024 to 03 OCT 2024

SE-4, 05 SEP 2024 to 03 OCT 2024

ELEV 219	TDZE 219
-----------------	-----------------



CATEGORY	A	B	C	D
LPV DA*	419/24		200 (200-½)	
LNAV/VNAV DA	505/24		286 (300-½)	
LNAV MDA	600/24		600/35	381 (400-⅝)
C CIRCLING	680-1	461 (500-1)	740-1½ 521 (600-1½)	780-2 561 (600-2)