

# TACAN RWY 33

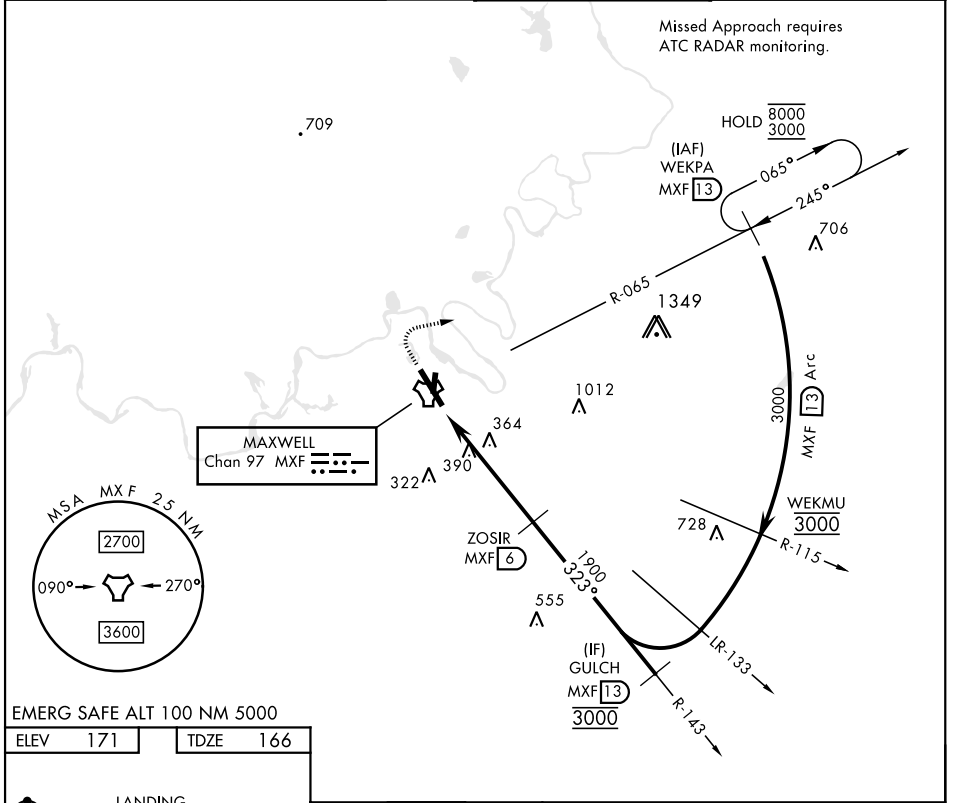
TACAN MXF Chan <b>97</b>	APCH CRS <b>323°</b>	Rwy ldg TDZE <b>166</b> Arprt Elev <b>171</b>
--------------------------	----------------------	--------------------------------------------------

AL-274 [USAF]

MAXWELL AFB (KMXF)

<p><b>▼</b> * Circling not authorized E of Rwy 15-33.</p>		<p>MISSED APPROACH: Climb to 1000, then climbing right turn to 3000 to intercept MXF TACAN R-065 outbound to 13 DME (WEKPA) and hold.</p>	
<p>ATIS ★ <b>134.7 269.9</b></p>	<p>MONTGOMERY APP CON <b>121.2 269.05 (N)</b> <b>124.0 363.025 (S)</b></p>	<p>TOWER ★ <b>118.15 253.5</b></p>	<p>GND CON <b>127.15 289.4</b></p>

Missed Approach requires ATC RADAR monitoring.

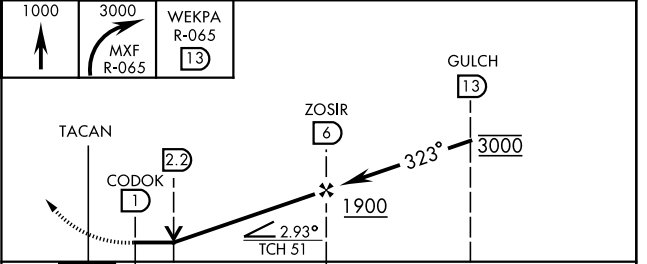
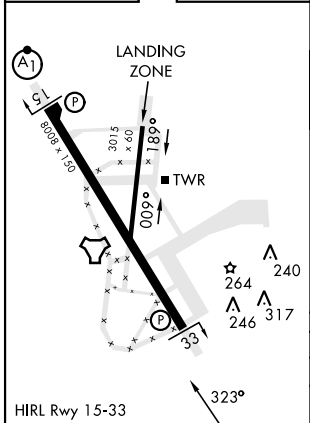


SE-4, 05 SEP 2024 to 03 OCT 2024

SE-4, 05 SEP 2024 to 03 OCT 2024

EMERG SAFE ALT 100 NM 5000

ELEV 171	TDZE 166
----------	----------



CATEGORY	A	B	C	D	E
S-33	740-1	574 (600-1)	740-1 5/8	574 (600-1 5/8)	
<b>C</b> CIRCLING *	740-1	569 (600-1)	740-1 5/8 569 (600-1 5/8)	920-2 1/2 749 (800-2 1/2)	NA

# TACAN RWY 33