

MT. CLEMENS, MICHIGAN

# RNAV (GPS) RWY 19

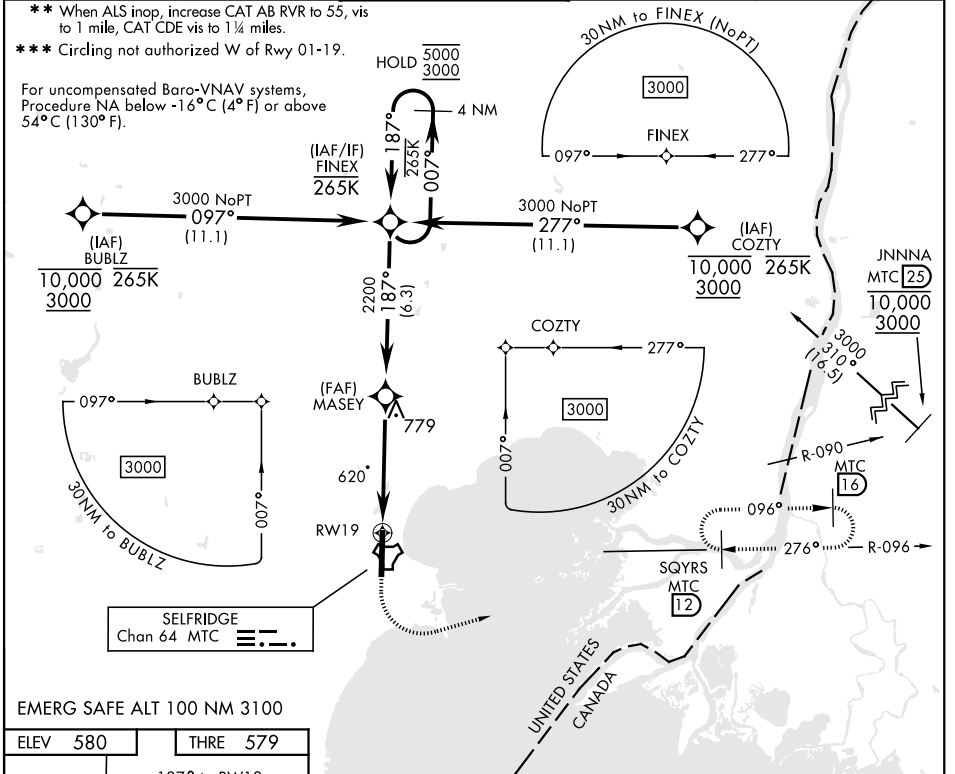
APCH CRS <b>187°</b>	Rwy ldg <b>9000</b>
THRE <b>579</b>	Arpt Elev <b>580</b>

AL-276 [USAF]

SELFRIDGE ANGB (KMTC)

DME/DME RNP-0.3 NA.	ALSF-1	MISSED APPROACH: Climb to 1200 then climbing left turn to 4000 direct SQYRS (MTC TACAN R-096/T2DME), do not exceed 250 KIAS until turn completion and hold, continue climb-in-hold to 4000.
* When ALS inop, increase vis to 1 1/4 miles.		

ATIS <b>125.325 270.1</b>	APP CON <b>119.6 318.2</b>	TOWER * <b>120.15 (CTAF) 0 225.4</b>	GND CON <b>128.3 275.8</b>	CLNC DEL <b>128.3 275.8</b>
------------------------------	-------------------------------	---	-------------------------------	--------------------------------

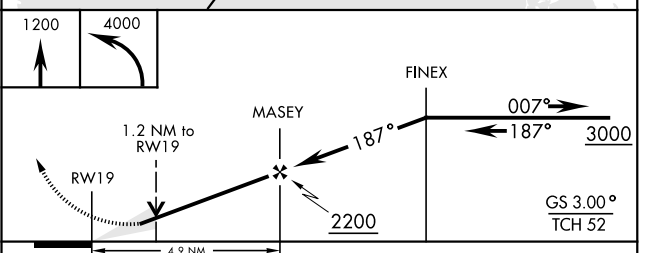
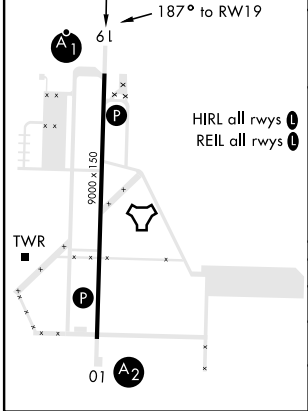


EC-1, 05 SEP 2024 to 03 OCT 2024

EC-1, 05 SEP 2024 to 03 OCT 2024

EMERG SAFE ALT 100 NM 3100

ELEV 580	THRE 579
----------	----------



CATEGORY	A	B	C	D	E
LNAV/VNAV DA*	1000/40		421	(500-3/4)	
LNAV MDA**	1000/24 421 (500-1/2)		1000/40 421 (500-3/4)		
<b>C</b> CIRCLING ***	1040-1 460 (500-1)	1040-1 1/2 460 (500-1/2)		1140-2 560 (600-2)	

MT. CLEMENS, MICHIGAN

42° 37' N-82° 50' W

SELFRIDGE ANGB (KMTC)

Orig 12AUG21

# RNAV (GPS) RWY 19