

MT. CLEMENS, MICHIGAN

TACAN RWY 1

TACAN MTC Chan 64	APCH CRS 018°	Rwy Ldg THRE Arprt Elev 9000 579 580
-----------------------------	-------------------------	--

AL-276 [USAF]

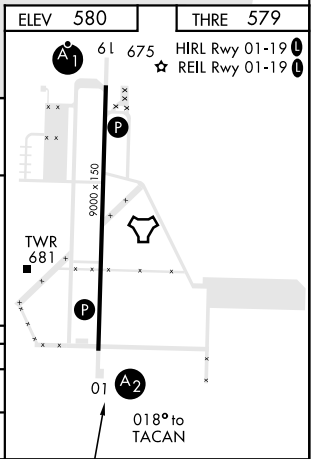
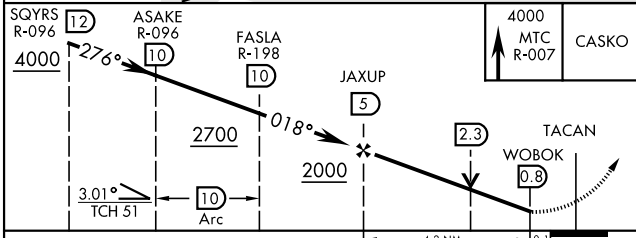
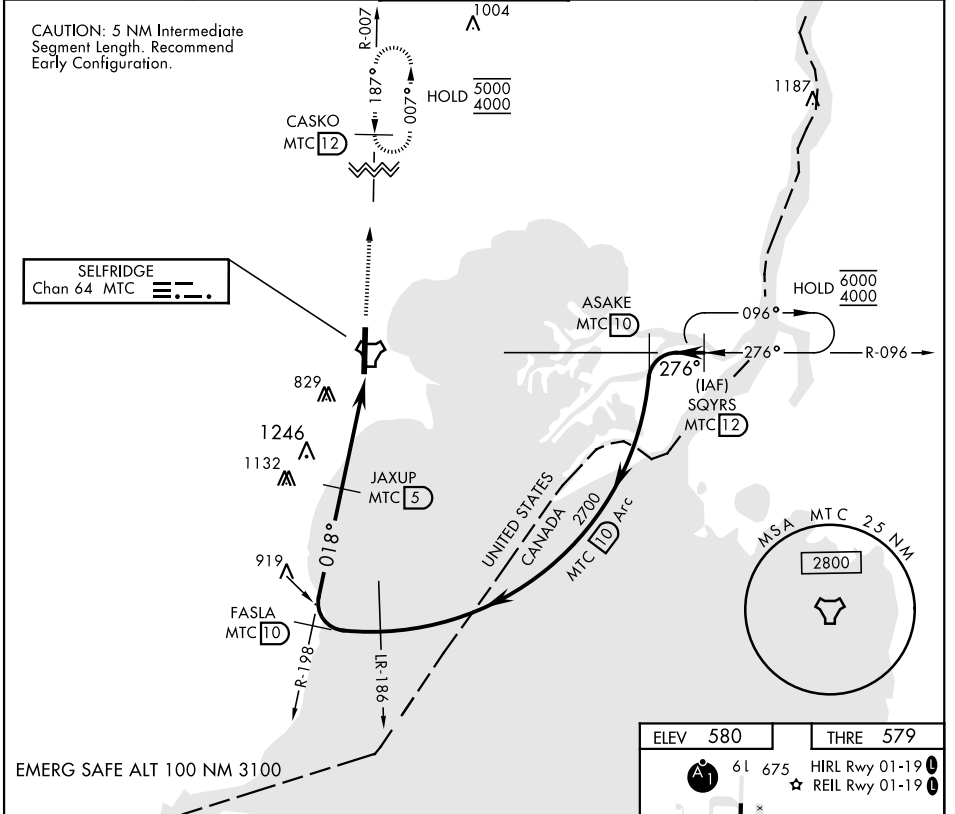
SELFRIDGE ANGB (KMTC)

▼ * When ALS inop, increase CAT AB RVR to 55, vis to 1 mile, CAT CDE vis to 1 1/8 miles.
 ** Circling not authorized W of Rwy 01-19.

SALS
A2

MISSED APPROACH: Climb to 4000 on MTC R-007 to CASKO and hold, continue climb-in-hold to 4000.

ATIS 125.325 270.1	SELFRIDGE APP CON 119.6 318.2	SELFRIDGE TOWER ★ 120.15(CTAF) 0 225.4	GND CON 128.3 275.8	CLNC DEL 128.3 275.8
------------------------------	---	--	-------------------------------	--------------------------------



CATEGORY	A	B	C	D	E
S-01*	1120/40 541 (600-3/4)		1120-1 5/8 541 (600-1 1/8)		
CIRCLING**	1120-1 541 (600-1)		1120-1 5/8 541 (600-1 1/8)	1140-2 561 (600-2)	

MT. CLEMENS, MICHIGAN
Amdt 3 23AUG12

42°37'N-82°50'W

SELFRIDGE ANGB (KMTC)

TACAN RWY 1

EC-1, 05 SEP 2024 to 03 OCT 2024

EC-1, 05 SEP 2024 to 03 OCT 2024