

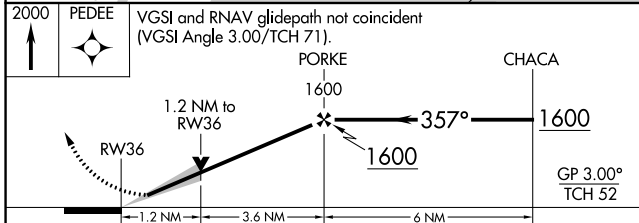
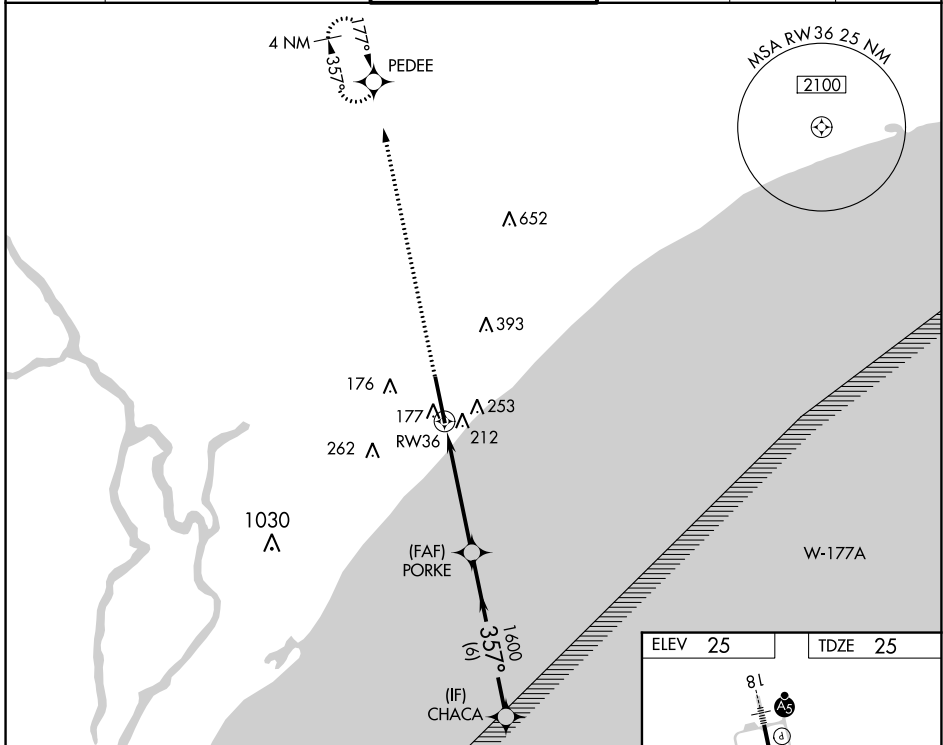
WAAS CH <b>93719</b> <b>W36A</b>	APP CRS <b>357°</b>	Rwy Idg <b>9503</b> TDZE <b>25</b> Apt Elev <b>25</b>
--	------------------------	---

# RNAV (GPS) RWY 36

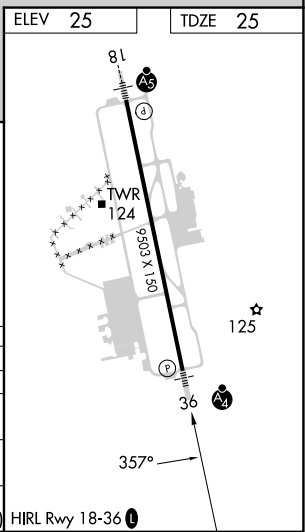
MYRTLE BEACH INTL (MYR)

RNP APCH - GPS.	MALSF	MISSED APPROACH: Climb to 2000 direct PEDEE and hold.
<p>▼ For uncompensated Baro-VNAV systems, LNAV/VNAV NA below -15°C or above 54°C. Inop table does not apply to LPV. For inop ALS, increase LNAV Cats C, D, and E visibility to 1½ SM.</p>		

ATIS <b>123.925</b>	MYRTLE BEACH APP CON * (171° - 321°) <b>127.4 257.95</b> (322° - 170°) <b>119.2 350.3</b>	MYRTLE BEACH TOWER * <b>128.45</b> (CTAF) <b>259.3</b>	GND CON <b>120.3 275.8</b>	CLNC DEL <b>120.3</b>	UNICOM <b>122.95</b>
------------------------	---	---	-------------------------------	--------------------------	-------------------------



CATEGORY	A	B	C	D	E
LPV DA	225/40		200 (200-¾)		
LNAV/VNAV DA	374/45		349 (400-7/8)		
LNAV MDA	480/40 455 (500-¾)		480/55 455 (500-1)		
CIRCLING	560-1 535 (600-1)		700-2 675 (700-2)	700-2¼ 675 (700-2¼)	700-2½ 675 (700-2½)



SE-2, 05 SEP 2024 to 03 OCT 2024

SE-2, 05 SEP 2024 to 03 OCT 2024