

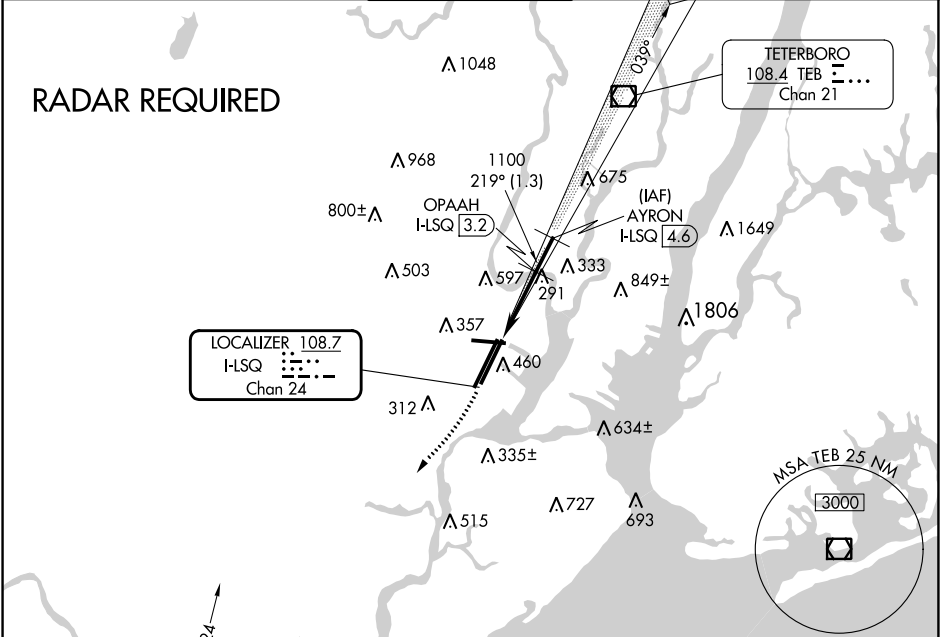
LOC/DME I-LSQ 108.7 Chan 24	APP CRS 219°	Rwy ldg 8207 TDZE 11 Apt Elev 18
---	------------------------	---

COPTER ILS/DME RWY 22L

NEWARK LIBERTY INTL (EWR)

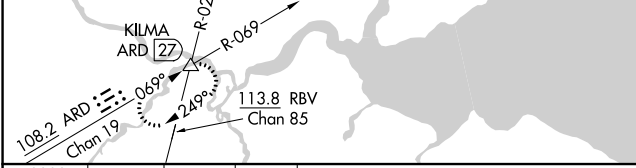
▼		ALSf-2 	MISSED APPROACH: Climbing right turn to 2000 heading 225° then climbing right turn to 3000 via ARD R-069 to KILMA INT and hold.		
D-ATIS 115.7 134.825	NEWARK APP CON 128.55 379.9	NEWARK TOWER 118.3 257.6	GND CON 121.8	CLNC DEL 118.85	CPDLC

RADAR REQUIRED

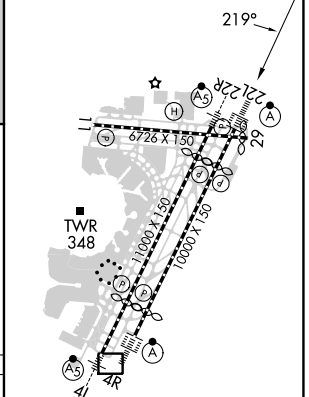
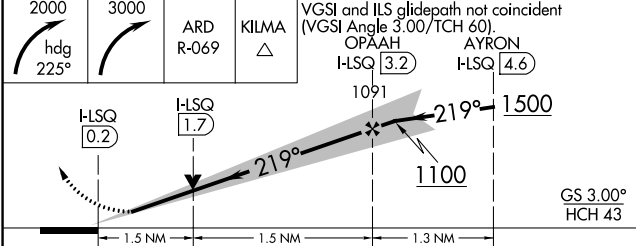


NE-2, 05 SEP 2024 to 03 OCT 2024

NE-2, 05 SEP 2024 to 03 OCT 2024



ELEV 18	D	TDZE 11
---------	----------	---------



CATEGORY	COPTER	
H-ILS 22L	211/12	200 (200-¼)
H-LOC 22L	560/12	549 (600-¼)

TDZ/CL Rwsy 4L, 4R, 11, 22L, 22R, and 29
REIL Rwsy 11, 22R, and 29
HIRL Rwsy 4L-22R, 4R-22L, and 11-29

COPTER ILS/DME RWY 22L