

LOC/DME I-EWR 110.75 Chan 44 (Y)	APP CRS 039°	Rwy ldg 8460 TDZE 10 Apt Elev 17
--	------------------------	---

COPTER ILS Y or LOC Y RWY 4L

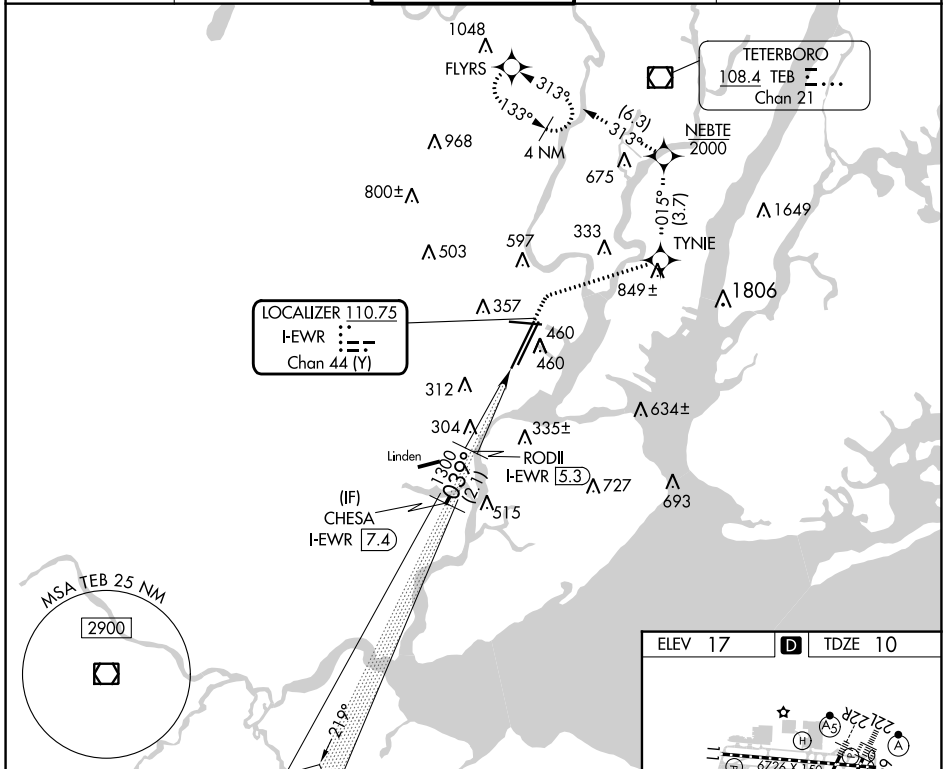
NEWARK LIBERTY INTL (EWR)

RNP APCH - GPS.
DME and RADAR required.
▼
▲ NA

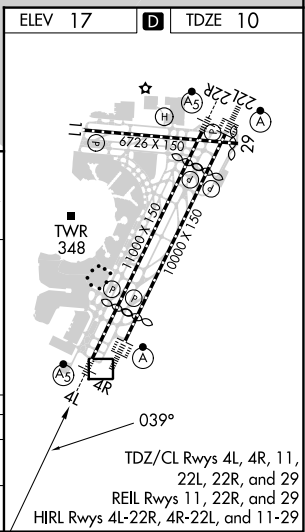
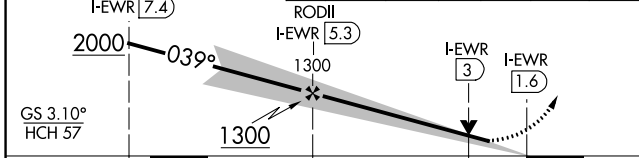


MISSED APPROACH: Climb to 520, then climbing right turn to 2000 direct TYNIE, then on track 015° to NEBTE, cross NEBTE at or below 2000, then climbing left turn to 3000 on track 313° to FLYRS and hold.

D-ATIS 115.7 134.825	NEWARK APP CON 128.55 379.9	NEWARK TOWER 118.3 257.6	GND CON 121.8	CLNC DEL 118.85	CPDLC
--------------------------------	---------------------------------------	------------------------------------	-------------------------	---------------------------	-------



VGSI and ILS glidepath not coincident (VGSI Angle 3.10/TCH 77).	520	2000	TYNIE	tr 015°	NEBTE	3000	FLYRS
	↑	↘	✧	✧	✧	↙	✧
				tr 015°	2000		tr 313°



CATEGORY	COPTER	
H-ILS 4L	210/12	200 (200-¼)
H-LOC 4L	560/12	550 (600-¼)

NE-2, 05 SEP 2024 to 03 OCT 2024

NE-2, 05 SEP 2024 to 03 OCT 2024