

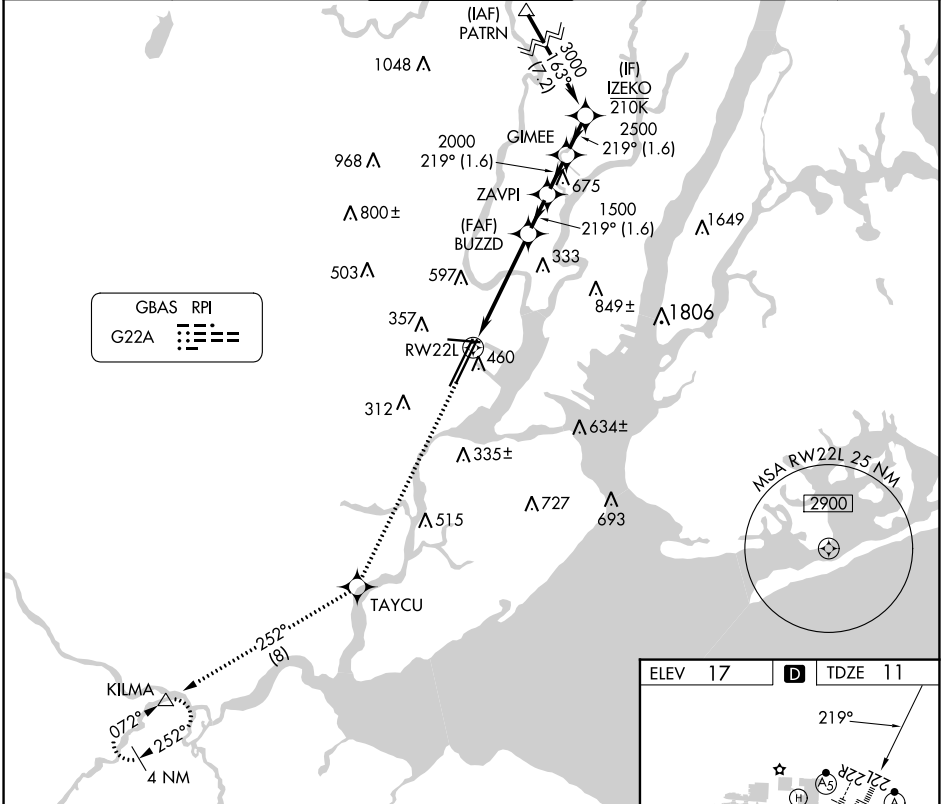
GBAS CH 21494 G22A	APP CRS 219°	Rwy Idg TDZE 11 Apt Elev 17	8207
--	------------------------	---	-------------

GLS RWY 22L

NEWARK LIBERTY INTL (EWR)

RNP APCH - GPS.	ALSIF-2	MISSED APPROACH: Climb to 3000 direct TAYCU and on track 252° to KILMA and hold.
NA Autopilot coupled approach NA below 211.		

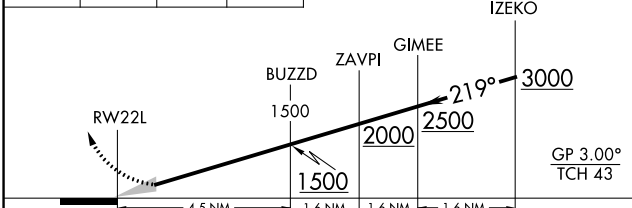
D-ATIS 115.7 134.825	NEWARK APP CON 128.55 379.9	NEWARK TOWER 118.3 257.6	GND CON 121.8	CLNC DEL 118.85	CPDLC
--------------------------------	---------------------------------------	------------------------------------	-------------------------	---------------------------	-------



GBAS RPI
G22A

MSA RW22L 25 NM

3000	TAYCU	KILMA	VGSI and GLS glidepath not coincident (VGSI Angle 3.00/TCH 60).
		tr 252°	



CATEGORY	A	B	C	D
GLS DA	211/18 200 (200-1/2)			

ELEV 17	D	TDZE 11
---------	----------	---------

TDZ/CL Rwy 4L, 4R, 11, 22L, 22R, and 29
REIL Rwy 11, 22R, and 29
HIRL Rwy 4L-22R, 4R-22L, and 11-29

NE-2, 05 SEP 2024 to 03 OCT 2024

NE-2, 05 SEP 2024 to 03 OCT 2024

GLS RWY 22L