

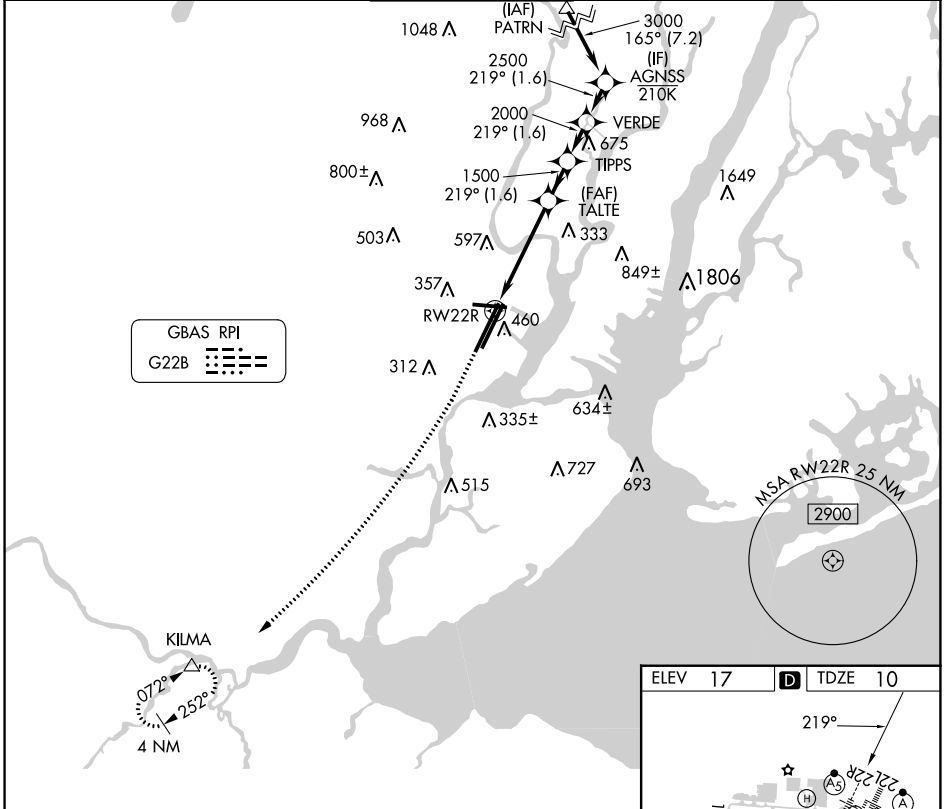
GBAS CH 20672 G22B	APP CRS 219°	Rwy Idg TDZE 10 Apt Elev 17
--	------------------------	---

GLS RWY 22R

NEWARK LIBERTY INTL (EWR)

RNP APCH - GPS.		MALSR	MISSED APPROACH: Climb to 2000, then climbing right turn to 3000 direct KILMA and hold.	
Autopilot coupled approach NA below 210.				

D-ATIS 115.7 134.825	NEWARK APP CON 128.55 379.9	NEWARK TOWER 118.3 257.6	GND CON 121.8	CLNC DEL 118.85	CPDLC
--------------------------------	---------------------------------------	------------------------------------	-------------------------	---------------------------	-------



NE-2, 05 SEP 2024 to 03 OCT 2024

NE-2, 05 SEP 2024 to 03 OCT 2024

2000	3000	KILMA	VGSi and GLS glidepath not coincident (VGSi Angle 3.10/TCH 70).	
		AGNSS		
RW22R TALTE 1500 TIPPIS 2000 VERDE 2500 3000				
GP 3.10° TCH 47				
CATEGORY	A	B	C	D
GLS DA	210/18		200 (200-½)	

