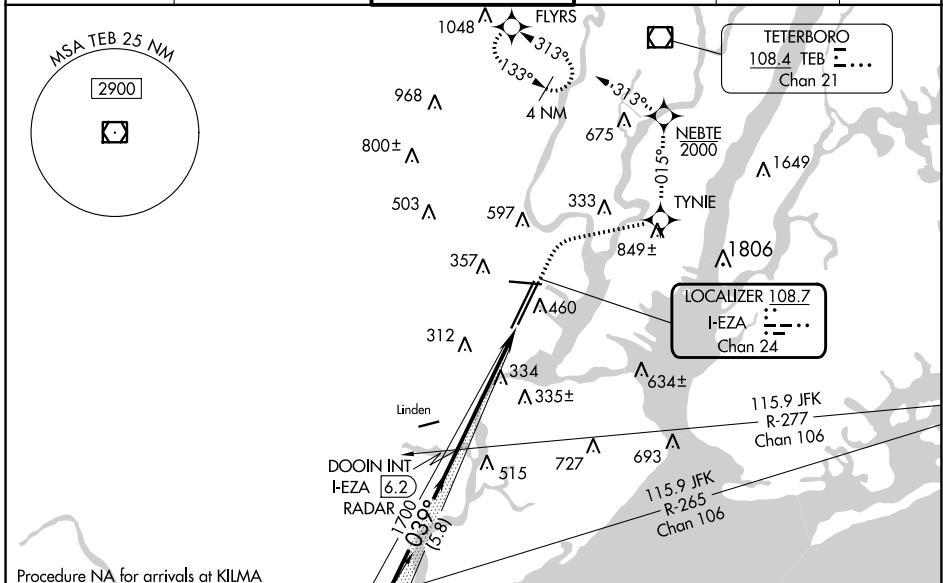


LOC/DME I-EZA	APP CRS	Rwy Idg	4R	4L
108.7	039°		8810	8460
Chan 24		TDZE	11	10
		Apt Elev	17	17

ILS or LOC RWY 4R

NEWARK LIBERTY INTL (EWR)

RNP APCH - GPS. RADAR required.		4R ALSF-2	4L MALSR	MISSED APPROACH: (Do not exceed 210K until NEBTE) Climb to 560 then climbing right turn to 2000 direct TYNIE and left turn on track 015° to NEBTE, cross NEBTE at or below 2000 then climbing left turn to 3000 on track 313° to FLYRS and hold, continue climb-in-hold to 3000.	
<p>When Circling to Rwy 29 at night, operational VGSI required, remain on or above VGSI glidepath until threshold. For inop ALS, increase Sidestep 4L Cat C visibility to 1½ SM.</p>		(A)	(AS)		
D-ATIS	NEWARK APP CON	NEWARK TOWER		GND CON	CLINC DEL
115.7 134.825	128.55 379.9	118.3 257.6		121.8	118.85
					CPDLC



Procedure NA for arrivals at KILMA on V433 westbound.

(IAF) KILMA 2800 085° (6)

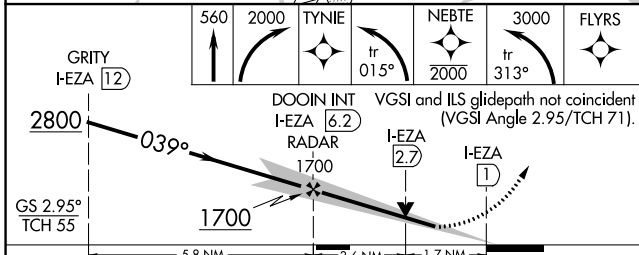
(IF) GRITY I-EZA 12

113.8 RBV Chan 85

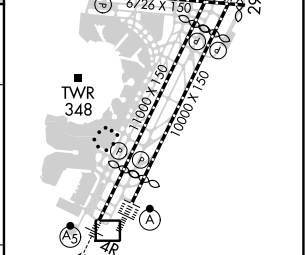
21.9° R-038

DOOIN INT I-EZA 6.2

GRITY I-EZA 12



ELEV 17	D	TDZE 4R 11
		TDZE 4L 10



CATEGORY	A	B	C	D
S-ILS 4R	211/18 200 (200-½)			
S-LOC 4R	600/24	589 (600-½)	600-1¼	589 (600-1¼)
SIDESTEP RWY 4L	600/55	590 (600-1)	600-1¼ 590 (600-1¼)	600-1½ 590 (600-1½)
CIRCLING	760-1	743 (800-1)	900-2¾ 883 (900-2¾)	900-3 883 (900-3)

FAF to MAP 5.2 NM					
Knots	60	90	120	150	180
Min:Sec	5:12	3:28	2:36	2:05	1:44

NE-2, 05 SEP 2024 to 03 OCT 2024

NE-2, 05 SEP 2024 to 03 OCT 2024