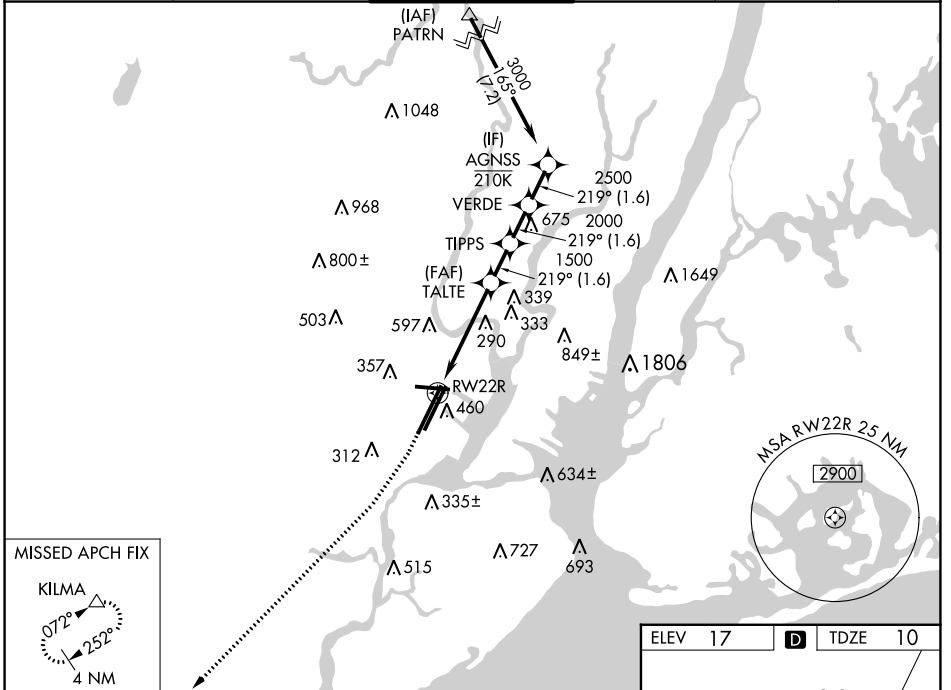


WAAS CH 61244 W22B	APP CRS 219°	Rwy Idg 9560 TDZE 10 Apt Elev 17
--	------------------------	---

RNAV (GPS) RWY 22R

NEWARK LIBERTY INTL (EWR)

RNP APCH - GPS.			MALSR	MISSED APPROACH: Climb to 2000, then climbing right turn to 3000 direct KILMA and hold.		
<p>▼ Circling NA south of Rwy 11-29. When Circling to Rwy 29 at night, operational VGSI required, remain on or above VGSI glidepath until threshold. For uncompensated Baro-VNAV systems, LNAV/VNAV NA below -12°C or above 54°C.</p>						
D-ATIS 115.7 134.825	NEWARK APP CON 128.55 379.9	NEWARK TOWER 118.3 257.6	GND CON 121.8	CLNC DEL 118.85	CPDLC	



NE-2, 05 SEP 2024 to 03 OCT 2024

NE-2, 05 SEP 2024 to 03 OCT 2024

MISSED APCH FIX	KILMA				VGSI and RNAV glidepath not coincident (VGSI Angle 3.10/TCH 70).				
2000	3000	KILMA	AGNSS						
↑		△	VERDE						
1.5 NM		2.9 NM		1.6 NM		1.6 NM		1.6 NM	
2000	3000	TALTE	TIPPS	VERDE	AGNSS	GP 3.10° TCH 47			
1.5 NM		2.9 NM		1.6 NM		1.6 NM		1.6 NM	
CATEGORY	A		B		C		D		
LPV DA	210/18		200 (200-½)						
LNAV/VNAV DA	468/45		458 (500-¾)						
LNAV MDA	560/24 550 (600-½)		560/60 550 (600-1¼)						
CIRCLING	660-1 643 (700-1)		900-2¾ 883 (900-2¾)		900-3 883 (900-3)				

