

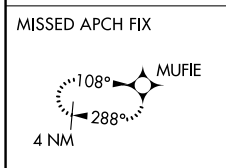
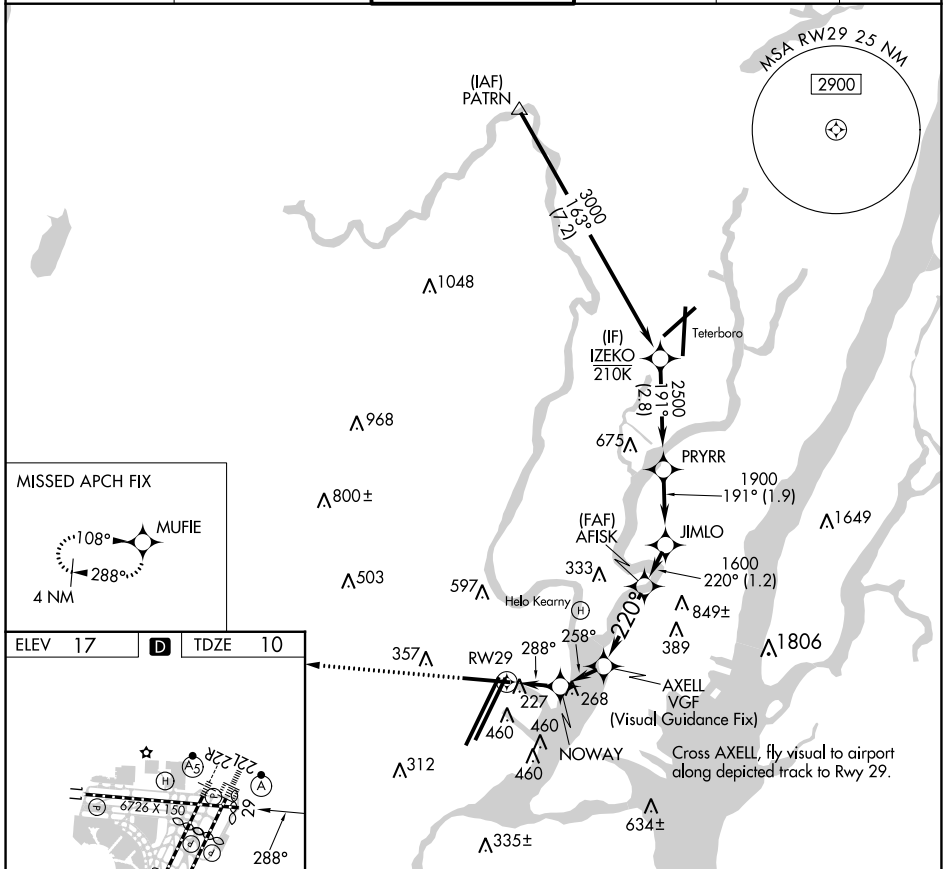
RNAV (GPS) W RWY 29

NEWARK LIBERTY INTL (EWR)

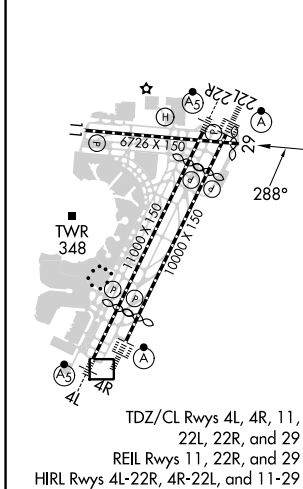
APP CRS	Rwy Idg	6502
288°	TDZE	10
	Apt Elev	17

RNP APCH - GPS. RADAR required.	MISSED APPROACH: (Do not exceed 165K until Rwy 29) Climb to 2000 on the extended visual approach track to Rwy 29, then climb to 3000 direct MUFIE and hold.
<p>▼ Rwy 29 helicopter visibility reduction below 1 SM NA. Straight-in Rwy 29 at night, ▲ operational VGSI required, remain at or above VGSI glidepath until threshold.</p>	

D-ATIS	NEWARK APP CON	NEWARK TOWER	GND CON	CLNC DEL	CPDLC
115.7 134.825	128.55 379.9	118.3 257.6	121.8	118.85	



ELEV 17	D	TDZE 10
---------	----------	---------



2000 ↑ to RWY29	3000 ↑ MUFIE	Turns required in the visual segment. * Recommended ALT.		IZEKO
		AXELL	JIMLO	PRYRR
		NOWAY	AFISK	IZEKO
		RWY 29	AXELL	PRYRR
		288°	258°	191°
		*500	*880	3000
		1600	1900	2500
		1600	1900	2500
		1.4 NM	1.2 NM	2.3 NM
		1.2 NM	1.2 NM	1.9 NM
		2.8 NM		
CATEGORY	A	B	C	D
LNAV MDA		920-3	910 (1000-3)	

NE-2, 05 SEP 2024 to 03 OCT 2024

NE-2, 05 SEP 2024 to 03 OCT 2024

RNAV (GPS) W RWY 29