

LOC/DME I-URD 110.5 Chan 42	APP CRS 224°	Rwy Idg TDZE 12 Apt Elev 21	7002
---	------------------------	---	-------------

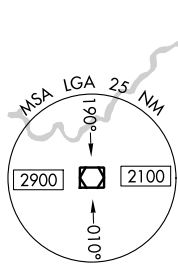
COPTER ILS or LOC RWY 22

LAGUARDIA (LGA)

DME required.		ALSIF-1	MISSED APPROACH: Climb to 3000 on LGA VOR/DME R-225 to PROUD/LGA VOR/DME 11 DME and hold.		
---------------	--	---------	---	--	--

D-ATIS ARR 125.95	NEW YORK APP CON 120.8 263.0	LAGUARDIA TOWER 118.7 263.0	GND CON 121.7 263.0	CLNC DEL 135.2 (COPTER)	CPDLC
D-ATIS DEP 127.05					

DME and RADAR REQUIRED

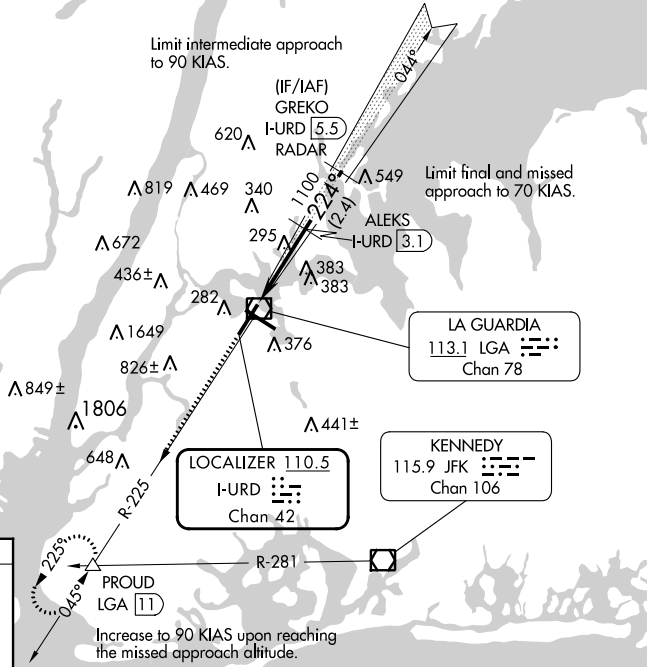
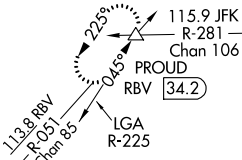


Limit intermediate approach to 90 KIAS.

(IF/IAF) GREKO I-URD [5.5] RADAR

Limit final and missed approach to 70 KIAS.

ALTERNATE MISSED APCH FIX

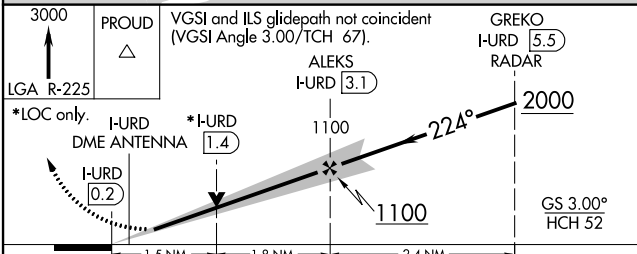
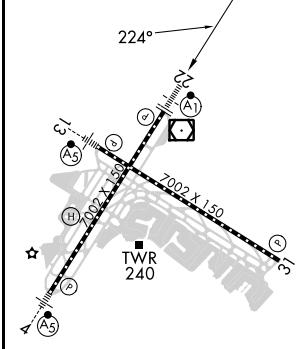


LA GUARDIA 113.1 LGA [5.5] Chan 78

LOCALIZER 110.5 I-URD [5.5] Chan 42

KENNEDY 115.9 JFK [5.5] Chan 106

ELEV 21	D	TDZE 12
---------	----------	---------



CATEGORY	COPTER		
H-ILS 22	212/12	200 (200-1/8)	
H-LOC 22	560/12	548 (600-1/8)	

TDZ/CL Rws 4, 13 and 22
HIRL Rws 4-22 and 13-31
REIL Rwy 31

COPTER ILS or LOC RWY 22

NE-2, 05 SEP 2024 to 03 OCT 2024

NE-2, 05 SEP 2024 to 03 OCT 2024