

(HOPEA3.HOPEA) 18312

AL-289 (FAA)

LAGUARDIA (LGA)
NEW YORK, NEW YORK

HOPEA THREE DEPARTURE (RNAV)

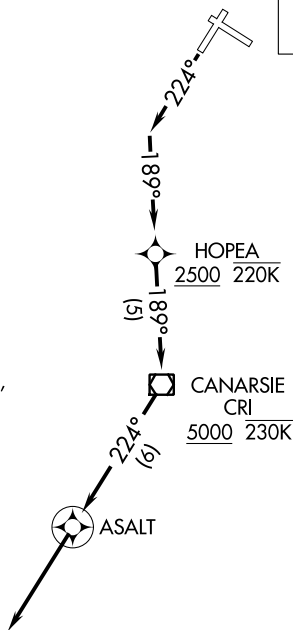
D-ATIS
127.05
CLNC DEL
135.2
CPDLC
GND CON
121.7 263.0
LAGUARDIA TOWER
118.7 263.0
NEW YORK DEP CON
120.4 263.0

**TOP ALTITUDE:
5000**

TAKEOFF MINIMUMS

Rwys 4, 13, 31: NA-ATC.

Rwy 22: Standard with minimum climb of 516' per NM to 5000.



SHIPP Δ

WAVEY Δ

ROBBINSVILLE
RBV

DIXIE Δ

WHITE Δ

NOTE: For Turbojets only.
 NOTE: DME/DME/IRU or GPS required.
 NOTE: RADAR required.
 NOTE: RNAV 1.
 NOTE: Do not exceed 220K until passing HOPEA.
 NOTE: Do not exceed 230K until passing CRI VOR/DME.
 NOTE: Strict compliance to track and altitude restrictions is mandatory. Aircraft performance may require reduced airspeed to comply with altitude restrictions. Advise ATC on initial contact if unable to comply with climb gradient requirements.
 NOTE: Aircraft filed RBV VORTAC, WHITE, SHIPP, WAVEY, DIXIE expect vectors after ASALT.

NOTE: Chart not to scale.



DEPARTURE ROUTE DESCRIPTION

TAKEOFF RUNWAY 22: Climb heading 224° to intercept course 189° to cross HOPEA at or above 2500, then on track 189° to cross CRI VOR/DME at or above 5000, then on track 224° to ASALT, then on track 224° for vectors on course. Maintain 5000 or as assigned by ATC. Expect clearance to filed altitude/flight level 10 minutes after departure.

HOPEA THREE DEPARTURE (RNAV)

(HOPEA3.HOPEA) 25JUN15

NEW YORK, NEW YORK
LAGUARDIA (LGA)

NE-2, 05 SEP 2024 to 03 OCT 2024

NE-2, 05 SEP 2024 to 03 OCT 2024