

LOC/DME I-URD <b>110.5</b> Chan <b>42</b>	APP CRS <b>224°</b>	Rwy Idg <b>7002</b> TDZE <b>12</b> Apt Elev <b>21</b>
---	------------------------	---

# ILS or LOC RWY 22

LAGUARDIA (LGA)

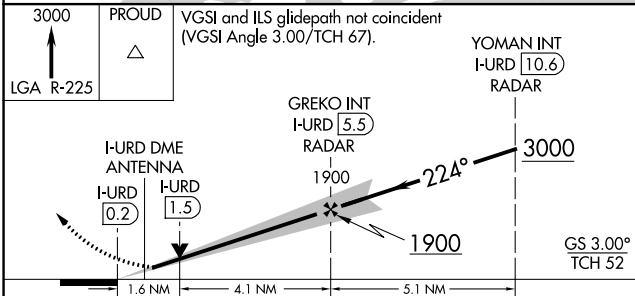
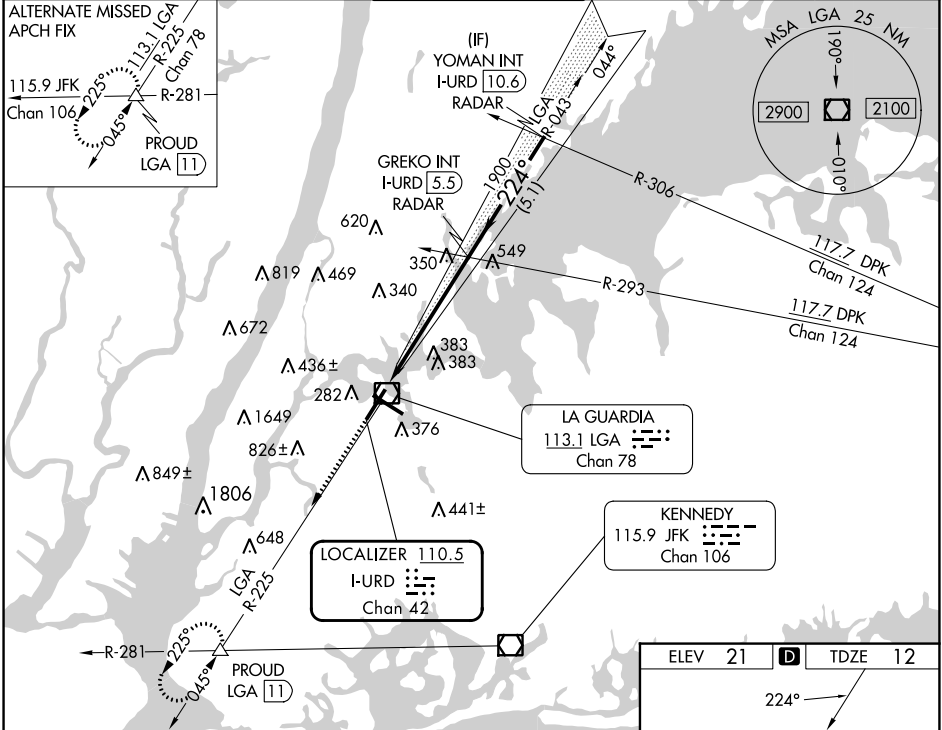
RADAR required for procedure entry. RADAR or DME required for LOC only.

⚠ Circling NA northwest of Rwy 4 and southwest of Rwy 13.

ALSF-1

MISSED APPROACH: Climb to 3000 on LGA VOR/DME R-225 to PROUD INT/LGA 11 DME and hold, continue climb-in-hold to 3000.

D-ATIS ARR <b>125.95</b>	NEW YORK APP CON D-ATIS DEP <b>127.05</b>	LAGUARDIA TOWER <b>118.7 263.0</b>	GND CON <b>121.7 263.0</b>	CLNC DEL <b>135.2</b>	CPDLC
--------------------------	--	---------------------------------------	-------------------------------	--------------------------	-------



ELEV 21	TDZE 12
TDZ/CL Rws 4, 13 and 22 HIRL Rws 4-22 and 13-31 REIL Rwy 31	
FAF to MAP 5.7 NM	
Knots	60 90 120 150 180
Min:Sec	5:42 3:48 2:51 2:17 1:54

CATEGORY	A	B	C	D
S-ILS 22	212/18 200 (200-½)			
S-LOC 22	600/24 588 (600-½)		600-1¼ 588 (600-1¼)	
CIRCLING	700-1 679 (700-1)		1080-3 1260-3 1059 (1100-3) 1239 (1300-3)	

NE-2, 05 SEP 2024 to 03 OCT 2024

NE-2, 05 SEP 2024 to 03 OCT 2024