

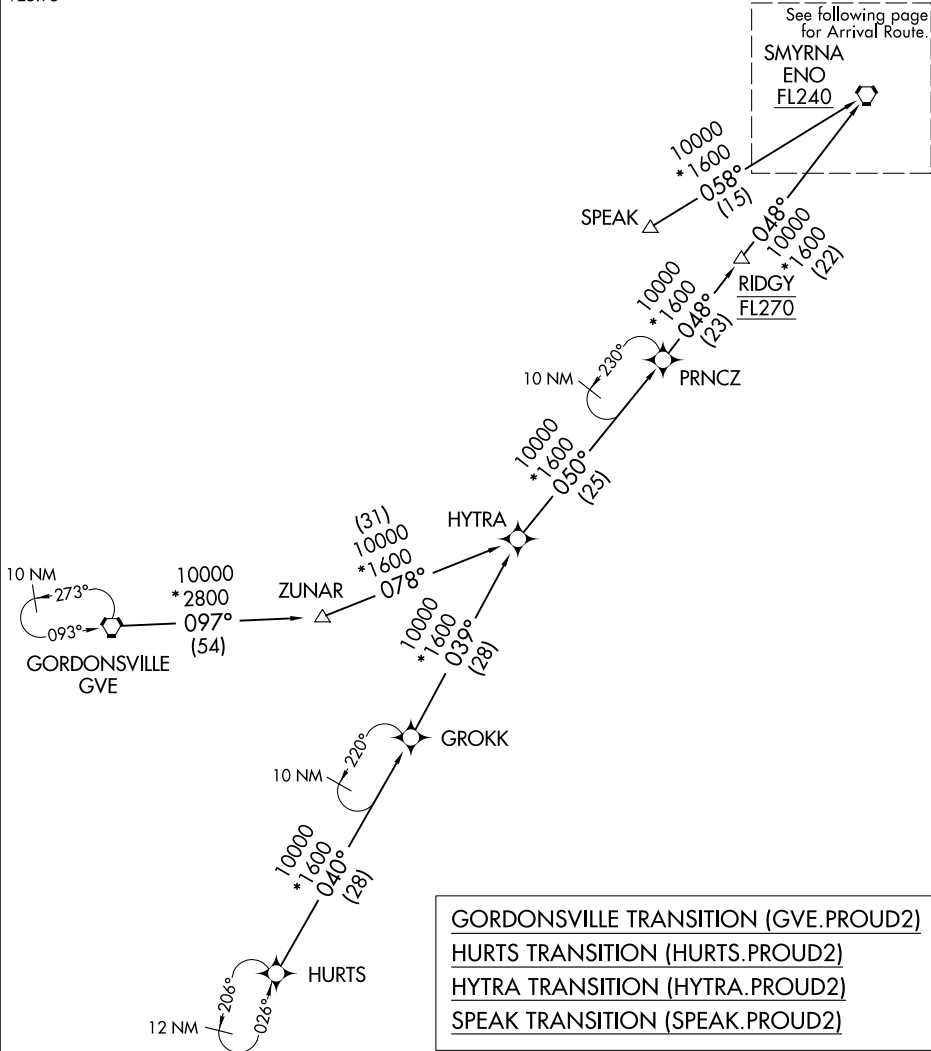
PROUD TWO ARRIVAL (RNAV) Transition Routes

NEW YORK APP CON
127.3 263.0
D-ATIS ARR
125.95

RNAV 1 - DME/DME/IRU or GPS.

RADAR required.

See following page
for Arrival Route.
SMYRNA
ENO
FL240



GORDONSVILLE TRANSITION (GVE.PROUD2)
 HURTS TRANSITION (HURTS.PROUD2)
 HYTRA TRANSITION (HYTRA.PROUD2)
 SPEAK TRANSITION (SPEAK.PROUD2)

NOTE: Jet aircraft only.
 NOTE: SPEAK transition for Washington Metropolitan departures only.

(CONTINUED ON FOLLOWING PAGE)

NOTE: Chart not to scale.

NE-2, 05 SEP 2024 to 03 OCT 2024

NE-2, 05 SEP 2024 to 03 OCT 2024