

# RNAV (GPS) RWY 10

WAAS Chan <b>44826</b> <b>W10A</b>	APCH CRS <b>100°</b>	Rwy Idg <b>8071</b> TDZE <b>14</b> Arpt Elev <b>15</b>
--	-------------------------	--

[USN]

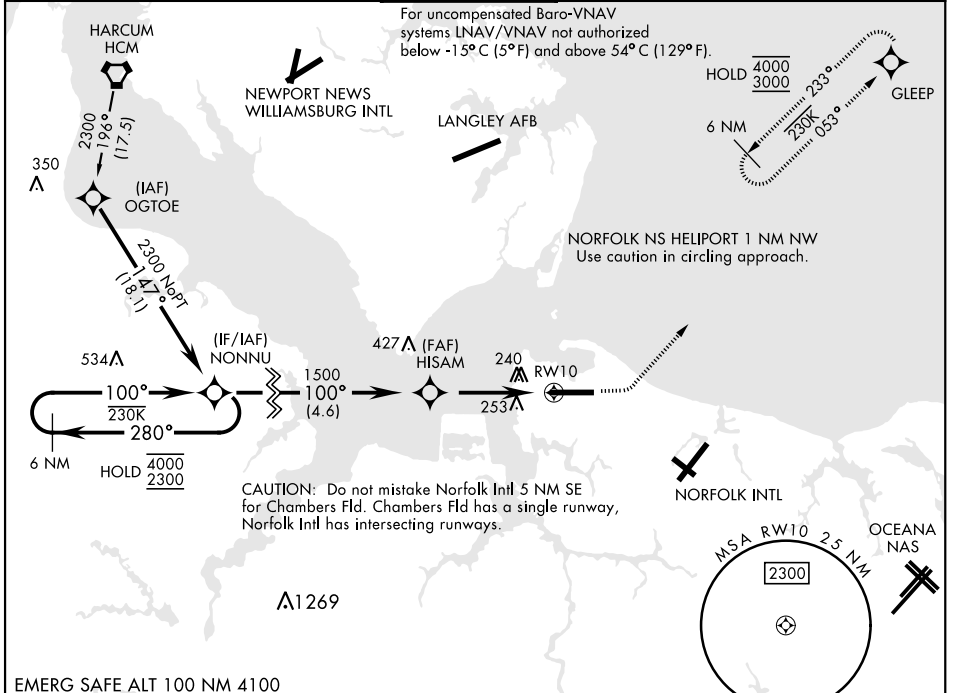
NORFOLK NS (CHAMBERS FLD) (KNGU)

RNP APCH  
 ▼ \*When ALS inop, increase vis to 3/4 mile.  
 \*\*When ALS inop, increase vis to 1 3/8 miles.  
 \*\*\* When ALS inop, increase CAT AB vis to 1 mile, CAT CDE vis to 1 1/8 miles.  
 \*\*\*\* Circling not authorized S of Rwy 10-28.

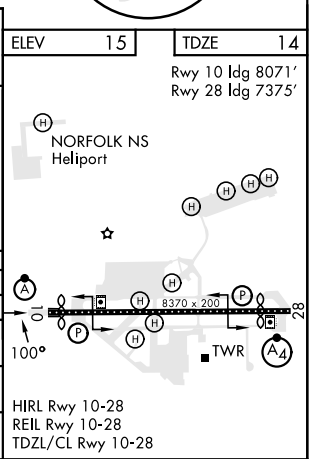


MISSED APPROACH: Climb to 800 then climbing left turn to 3000 direct GLEEP and hold.

ATIS <b>118.425 338.225</b>	APP CON <b>118.9 273.475</b>	CHAMBERS TOWER <b>124.3 379.15</b>	GND CON <b>121.8 370.85</b>	CLNC DEL <b>120.7 339.8</b>	ASR/PAR
--------------------------------	---------------------------------	---------------------------------------	--------------------------------	--------------------------------	---------



VGSI and RNAV glidepath not coincident (VGSI Angle 3.00/TCH 35).					
6 NM Holding Pattern		NONNU		800	3000
4000 2300		100°		GLEEP	
GP 3.00° TCH 50		100°		1500	
HISAM		1.5 NM to RWY 10		RWY 10	
4.5 NM					
CATEGORY	A	B	C	D	E
LPV DA *	214-1/2		200	(200-1/2)	
LNAV/VNAV DA **	520-1		506	(600-1)	
LNAV MDA ***	520-1/2 506 (600-1/2)		520-1	506	(600-1)
CIRCLING ****	520-1 505 (600-1)	540-1 525 (600-1)	540-1 1/2 525 (600-1 1/2)	580-2	565 (600-2)



# RNAV (GPS) RWY 10

NE-3, 05 SEP 2024 to 03 OCT 2024

NE-3, 05 SEP 2024 to 03 OCT 2024