

LOC I-AAZ 111.9	APP CRS 116°	Rwy Idg TDZE Apt Elev	10000 9 9
---------------------------	------------------------	-----------------------------	--------------------------------------

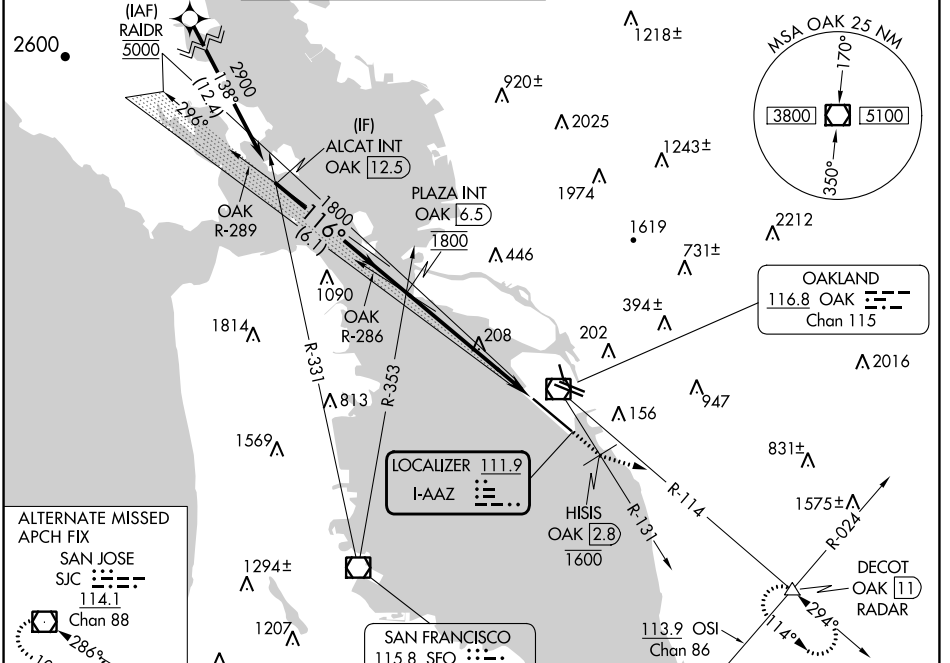
ILS RWY 12 (SA CAT I)

SAN FRANCISCO BAY OAKLAND INTL (OAK)

DME required. From RAIDR: RNAV 1-GPS required. MALSR MISSED APPROACH: Climb on heading 116° and on OAK VOR/DME R-131 to cross HISIS/OAK 2.8 DME at or below 1600 then climb to 5100 on heading 090° and on OAK VOR/DME R-114 to DECOT INT/OAK 11 DME/RADAR and hold, continue climb-in-hold to 5100.

Requires specific OPSPEC, MSPEC, or LOA approval and use of HUD to DH.

D-ATIS 133.775	NORCAL APP CON 125.35 263.15	OAKLAND TOWER 118.3 291.65 (Rwys 10L/R-28L/R, 15-33) 127.2 256.9 (Rwy 12-30)	GND CON 121.9 (Rwys 10L/R-28L/R, 15-33) 121.75 (Rwy 12-30)	CLNC DEL 121.1	CPDLC
--------------------------	----------------------------------------	--------------------------------------------------------------------------------------------------------	--------------------------------------------------------------------------------------	--------------------------	-------

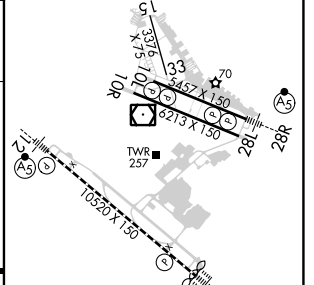
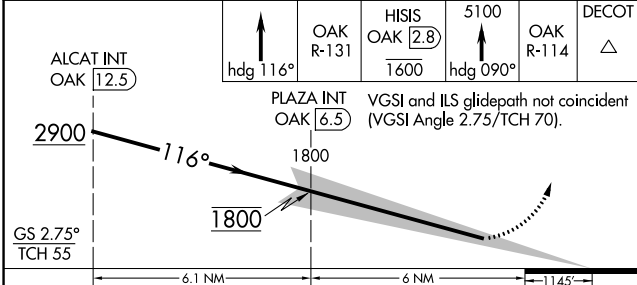


SW-2, 05 SEP 2024 to 03 OCT 2024

SW-2, 05 SEP 2024 to 03 OCT 2024

ALTERNATE MISSED APCH FIX
SAN JOSE
SJC
114.1
Chan 88
286°-R-106

ELEV 9	TDZE 9
--------	--------



CATEGORY	A	B	C	D
S-ILS 12	RA 153/14 150 DA 159			

SA CATEGORY I ILS - SPECIAL AIRCREW & AIRCRAFT CERTIFICATION REQUIRED

REIL Rwy 10R
TDZ/CL Rwy 30
MIRL Rwy 15-33
HIRL Rws 12-30, 10L-28R, 10R-28L