

APP CRS	Rwy Idg	5457
278°	TDZE	7
	Apt Elev	9

RNAV (RNP) Z RWY 28R

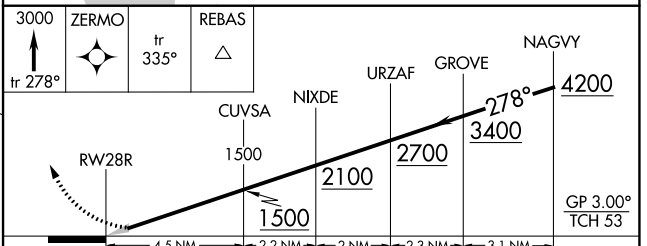
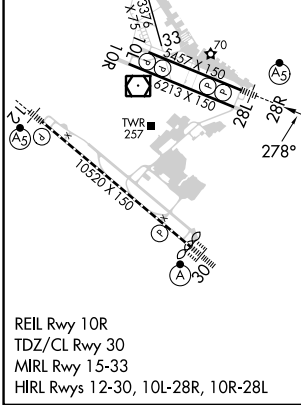
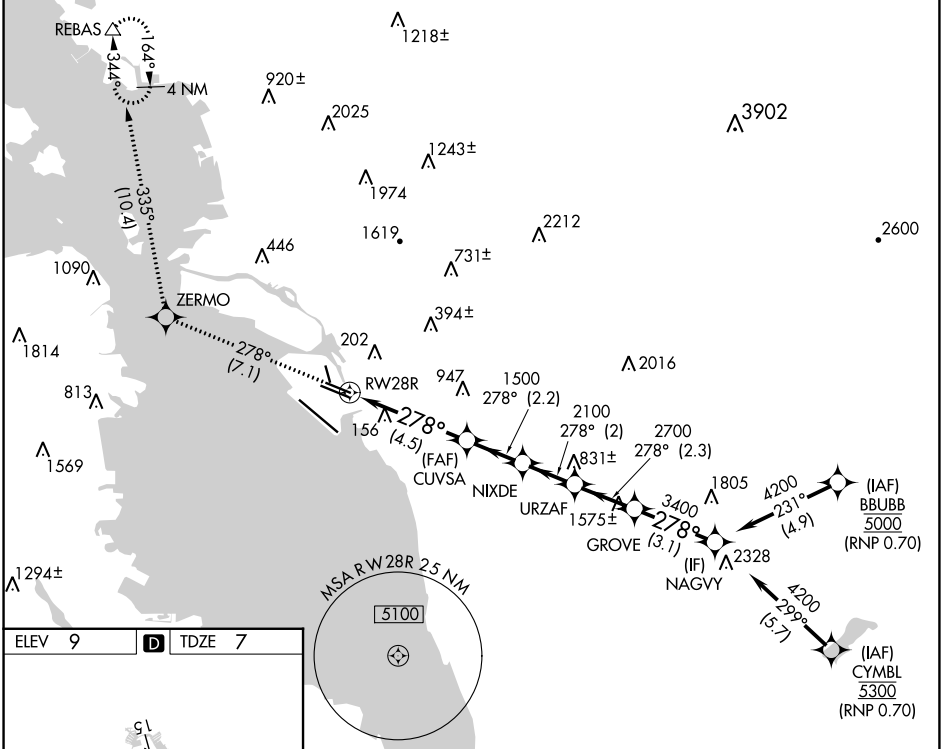
SAN FRANCISCO BAY OAKLAND INTL (OAK)

▼ For uncompensated Baro-VNAV systems, procedure NA below 1°C (34°F) or above 54°C (130°F). For inop MALSR, increase RNP 0.11 DA all Cats visibility to RVR 4500. GPS required.



MISSED APPROACH: Climb to 3000 on track 278° to ZERMO and on track 335° to REBAS and hold.

D-ATIS 133.775	NORCAL APP CON 125.35 263.15	OAKLAND TOWER 118.3 291.65 (Rwys 10L/R-28L/R, 15-33) 127.2 256.9 (Rwy 12-30)	GND CON 121.9 (Rwys 10L/R-28L/R, 15-33) 121.75 (Rwy 12-30)	CLNC DEL 121.1	CPDLC
--------------------------	--	---	--	--------------------------	-------



CATEGORY	A	B	C	D
RNP 0.11 DA		276/24	269 (300-½)	
RNP 0.30 DA		414/45	407 (500-¾)	

AUTHORIZATION REQUIRED

SW-2, 05 SEP 2024 to 03 OCT 2024

SW-2, 05 SEP 2024 to 03 OCT 2024