

OGDEN, UTAH

HI-ILS or LOC Y RWY 14

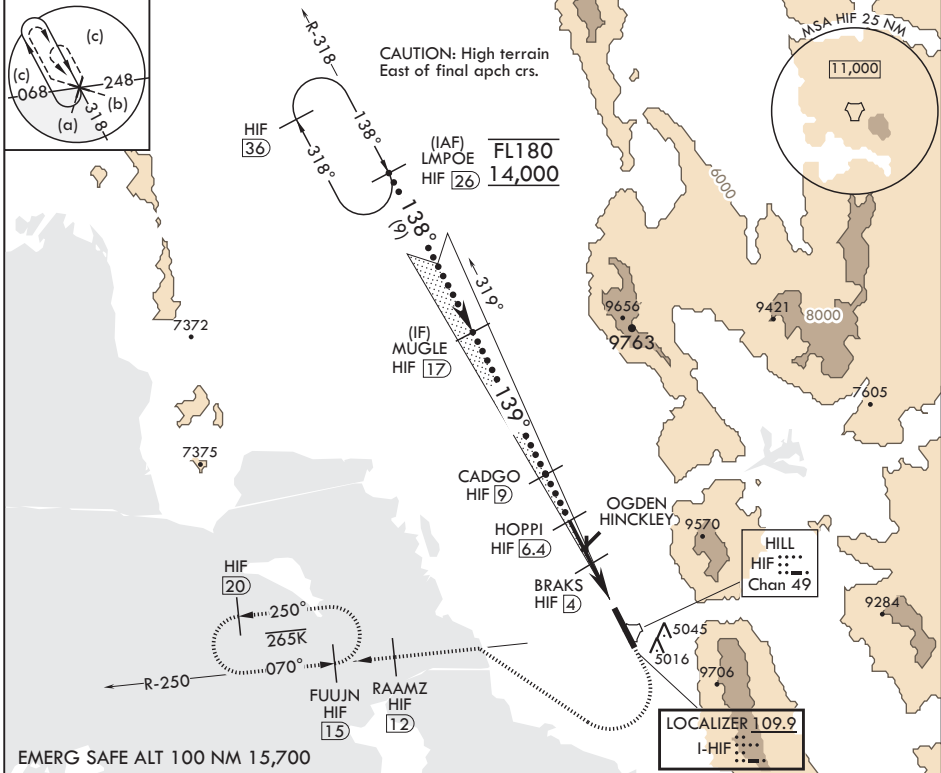
LOC I-HIF 109.9	APCH CRS 139°	Rwy Idg 13,500	TDZE 4786
		Arprt Elev 4789	

JAL-296 (USAF)

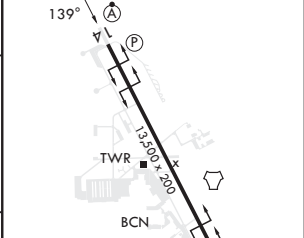
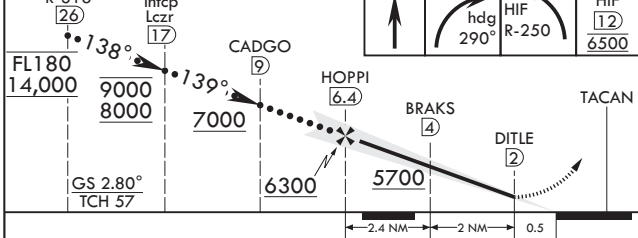
HILL AFB (KHIF)

<p>⚠ * When ALS inop, increase RVR to 40, and vis to 3/4 mile. ** When ALS inop, increase RVR to 55, and vis to 1 mile. *** Circling not authorized NE of Rwy 14-32.</p>	<p>ALSF-2 </p>	<p>MISSED APPROACH: Climb to 5300, then turn right heading 290°, remain within HIF TACAN 5.7 DME until established on 290° hdg. Intercept the HIF R-250 outbd. Cross RAAMZ at 6500, then climb and maintain 7200 direct to FUJUN and hold.</p>
---	---------------------	--

<p>ATIS 134.925 397.9</p>	<p>SALT LAKE CITY APP CON 121.1 319.25</p>	<p>TOWER 127.15 263.15</p>	<p>GND CON 121.6 275.8</p>	<p>CLNC DEL 124.1 335.8</p>
--------------------------------------	---	---------------------------------------	---------------------------------------	--



LMPOE R-318 HIF 26	MUGLE Intcp Lczt HIF 17	5300	6500	RAAMZ HIF 12 / 6500	ELEV 4789	TDZE 4786
--------------------	-------------------------	------	------	---------------------	-----------	-----------



CATEGORY	C	D	E
S-ILS 14*	4986/24	200	(200-1/2)
S-LOC 14**	5080/24	294	(300-1/2)
C CIRCLING***	5280-1 1/2 491 (500-1 1/2)	5340-2 551 (600-2)	5900-3 1111 (1200-3)

Approach lights	RWY 14 2400'				
REIL all Rwys	HILL all Rwys				
FAF to MAP 4.4 NM					
Knots	120	140	160	180	200
Min:Sec	2:12	1:53	1:39	1:28	1:19

OGDEN, UTAH

41°07'N - 111°58'W

HILL AFB (KHIF)

Amdt 9 05OCT23

HI-ILS or LOC Y RWY 14

SW-4, 05 SEP 2024 to 03 OCT 2024

SW-4, 05 SEP 2024 to 03 OCT 2024