

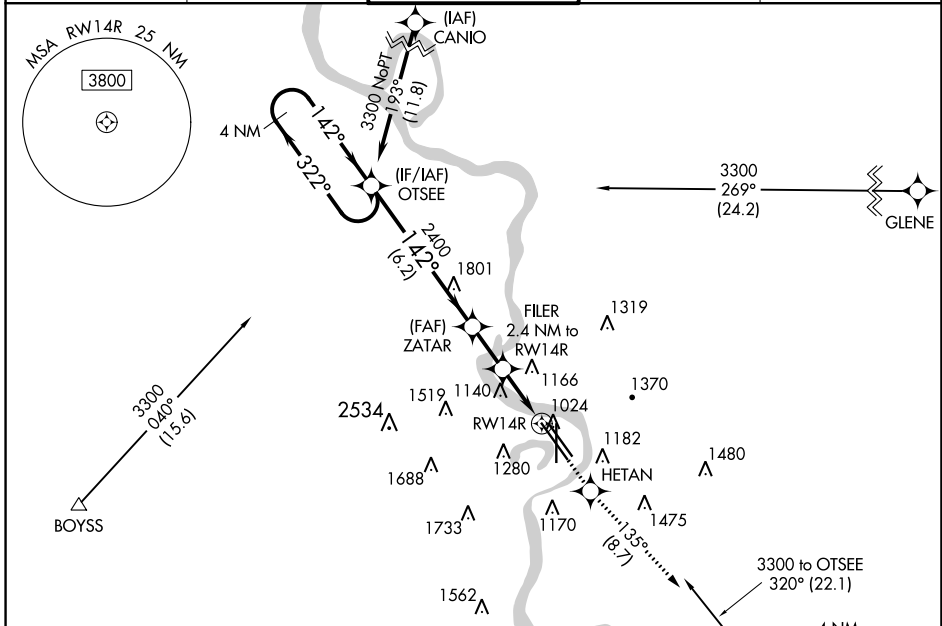
WAAS CH <b>56217</b> <b>W14A</b>	APP CRS <b>142°</b>	Rwy Idg TDZE Apt Elev	<b>9502</b> <b>985</b> <b>985</b>
--	------------------------	-----------------------------	---

# RNAV (GPS) Y RWY 14R

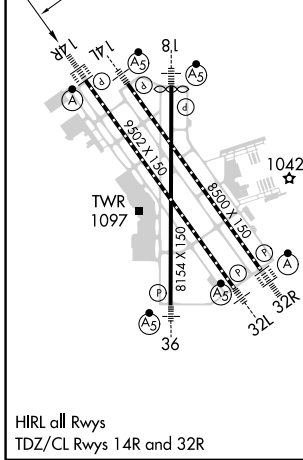
EPPLEY AIRFIELD (OMA)

RNP APCH.	ALSF-2	MISSED APPROACH: Climb to 3000 direct HETAN and on track 135° to OVR VORTAC and hold.
<p>▼ For uncompensated Baro-VNAV systems, LNAV/VNAV NA below -19°C (-2°F) or above 54°C (130°F).                  ▲ For inop ALS, increase LNAV/VNAV all Cats visibility to 1 3/8 SM.</p>		

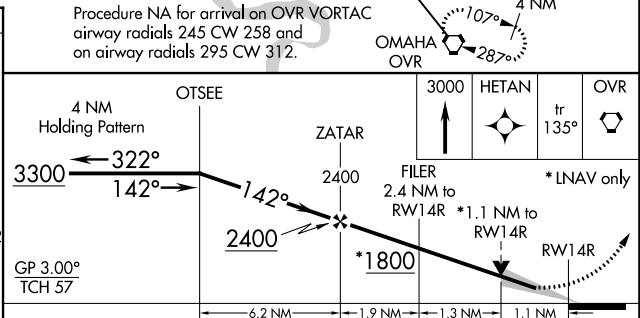
D-ATIS <b>120.4</b>	OMAHA APP CON <b>120.1 354.05</b>	OMAHA TOWER <b>132.1 256.9</b>	GND CON <b>121.9</b>	CLNC DEL <b>119.9</b>
------------------------	--------------------------------------	-----------------------------------	-------------------------	--------------------------



ELEV 985	<b>D</b>	TDZE 985
----------	----------	----------



HIRL all Rwys  
TDZ/CL Rwys 14R and 32R



CATEGORY	A	B	C	D
LPV DA	1185/18		200 (200-1/2)	
LNAV/VNAV DA	1465/50		480 (500-1)	
LNAV MDA	1380/24	395 (400-1/2)	1380/35	395 (400-3/8)
<b>C</b> CIRCLING	1660-1 675 (700-1)	1680-1 695 (700-1)	2000-3 1015 (1100-3)	2040-3 1055 (1100-3)

NC-2, 05 SEP 2024 to 03 OCT 2024

NC-2, 05 SEP 2024 to 03 OCT 2024