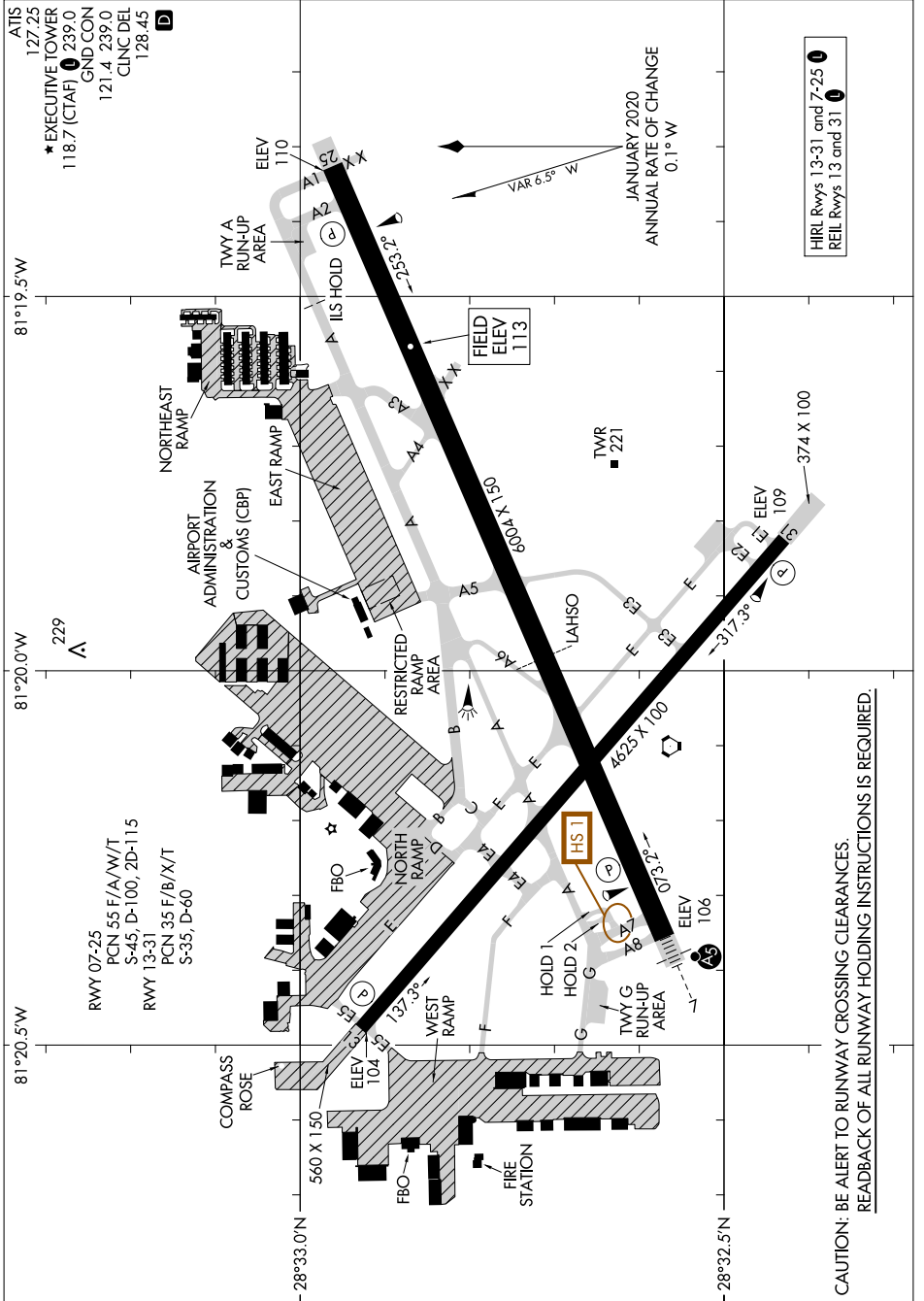


AIRPORT DIAGRAM

AL-305 (FAA)

EXEC (O.R.L.)
ORLANDO, FLORIDA



SE-3, 05 SEP 2024 to 03 OCT 2024

SE-3, 05 SEP 2024 to 03 OCT 2024

HIREL Rwy 13-31 and 7-25	1
REIL Rwy 13 and 31	1

JANUARY 2020
ANNUAL RATE OF CHANGE
0.1° W

VAR 6.5° W

**CAUTION: BE ALERT TO RUNWAY CROSSING CLEARANCES.
READBACK OF ALL RUNWAY HOLDING INSTRUCTIONS IS REQUIRED.**

AIRPORT DIAGRAM

ORLANDO, FLORIDA
EXEC (O.R.L.)