

# BLYTHE FIVE ARRIVAL

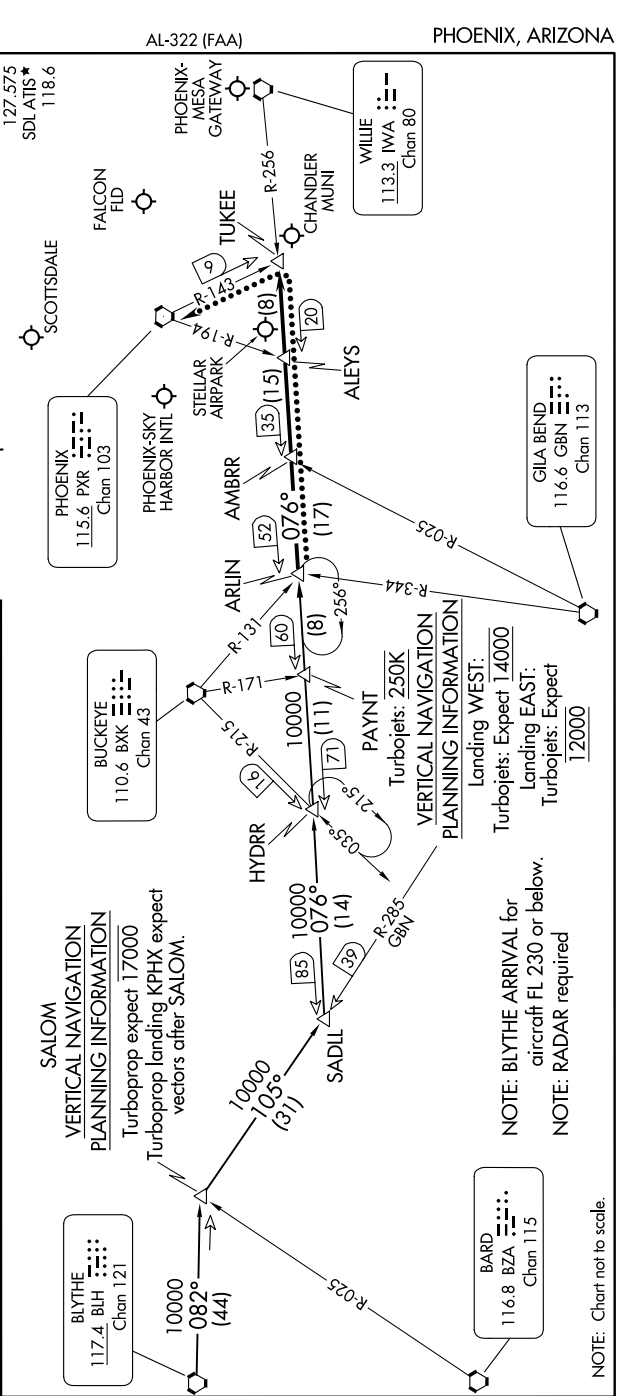
SW-4, 05 SEP 2024 to 03 OCT 2024

**ARRIVAL ROUTE DESCRIPTION**  
**BLYTHE TRANSITION (BLH.BLH5):** From over BLH VORTAC on BLH R-082 to SALOM, then on GBN R-285 and IWA R-256 to ARLIN. Thence . . . . .

**PHOENIX SKY HARBOR INTL:** Rwys 7L/R or 8: From over ARLIN, expect vectors to final approach course; Rwys 25L/R or 26: From over ARLIN, on IWA R-256 to TUKEE. Expect vectors to final approach course prior to TUKEE.

**SATELLITE AIRPORTS:** Expect vectors after passing SALOM.

**LOST COMMUNICATIONS:** After ARLIN, on IWA R-256 and PXR R-143 to PXR VORTAC.



# BLYTHE FIVE ARRIVAL

SW-4, 05 SEP 2024 to 03 OCT 2024

AL-322 (FAA)