

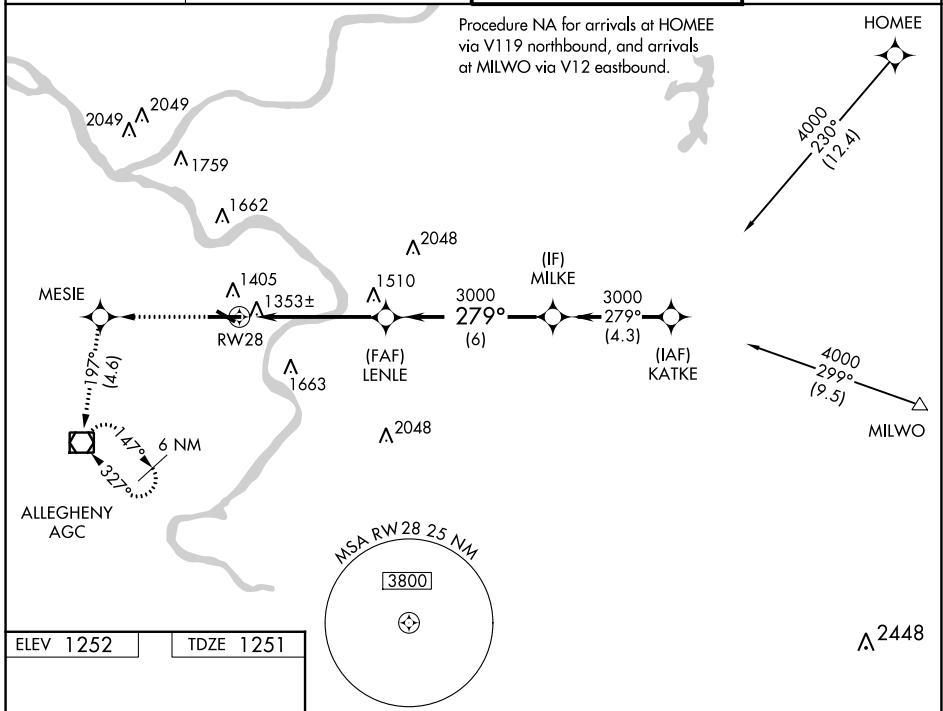
WAAS CH 65625 W28A	APP CRS 279°	Rwy ldg TDZE 1251 Apt Elev 1252	6501
--	------------------------	---	-------------

RNAV (GPS) RWY 28

ALLEGHENY COUNTY (AGC)

RNP APCH - GPS.	MALSR 	MISSED APPROACH: Climb to 3000 direct MESIE and on course 197° to AGC VOR/DME and hold, continue climb-in-hold to 3000.
<p>⚠ For uncompensated Baro-VNAV systems, LNAV/VNAV NA below -16°C or above 54°C. Circling Rwy 13 NA at night. For inop ALS, increase LPV all Cats visibility to RVR 4500 and LNAV/VNAV all Cats visibility to RVR 5500.</p>		

ATIS 120.55	PITTSBURGH APP CON 119.35 285.575	ALLEGHENY TOWER 121.1 239.0	GND CON 121.7
-----------------------	---	---------------------------------------	-------------------------



NE-4, 05 SEP 2024 to 03 OCT 2024

NE-4, 05 SEP 2024 to 03 OCT 2024

ELEV 1252	TDZE 1251	3000		MESIE	crs 197°	AGC	LENLE	MILKE	Procedure Turn NA
REIL Rws 10, 13, and 31 HIRL Rws 10-28 and 13-31		3000	1.2 NM to RWY 28	4 NM	6 NM	3000	279°	3000	GP 3.00° TCH 51
CATEGORY	A	B	C	D					
LPV DA	1563/24 312 (400-½)								
LNAV/VNAV DA	1625/35 374 (400-⅝)								
LNAV MDA	1700/24 449 (500-½)		1700/45 449 (500-⅔)						
<input checked="" type="checkbox"/> CIRCLING	1720-1¼ 468 (500-1¼)		1980-2 728 (800-2)		1980-2¼ 728 (800-2¼)				