

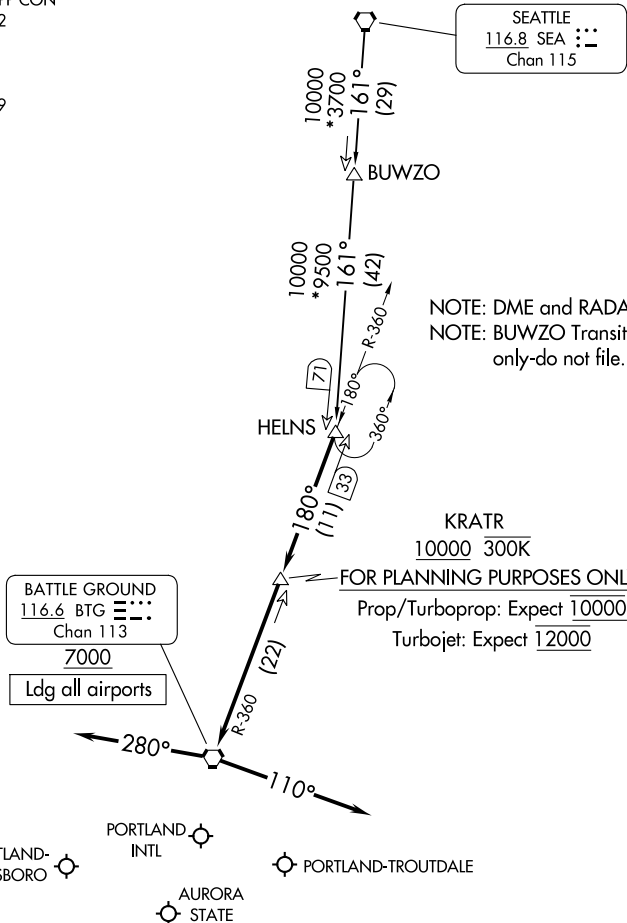
(HELNS.HELNS6) 24025

# HELNS SIX ARRIVAL

AL-330 (FAA)

PORTLAND, OREGON

PORTLAND APP CON  
124.35 299.2  
HIO ATIS  
127.65  
PDX D-ATIS  
128.35 269.9



## ARRIVAL ROUTE DESCRIPTION

**BUWZO TRANSITION (BUWZO.HELNS6):** From over BUWZO via SEA R-161 to HELNS. Thence. . . .

**SEATTLE TRANSITION (SEA.HELNS6):** From over SEA VORTAC via SEA R-161 to HELNS. Thence. . . .

. . . . from over HELNS on BTG VORTAC R-360 to cross KRATR at or above 10000, then as depicted to cross BTG VORTAC at or above 7000.

**LANDING EAST:** From BTG VORTAC heading 280°, expect RADAR vectors to final approach course.

**LANDING WEST:** From BTG VORTAC heading 110°, expect RADAR vectors to final approach course.

# HELNS SIX ARRIVAL

(HELNS.HELNS6) 29MAR18

PORTLAND, OREGON

NW-1, 05 SEP 2024 to 03 OCT 2024

NW-1, 05 SEP 2024 to 03 OCT 2024