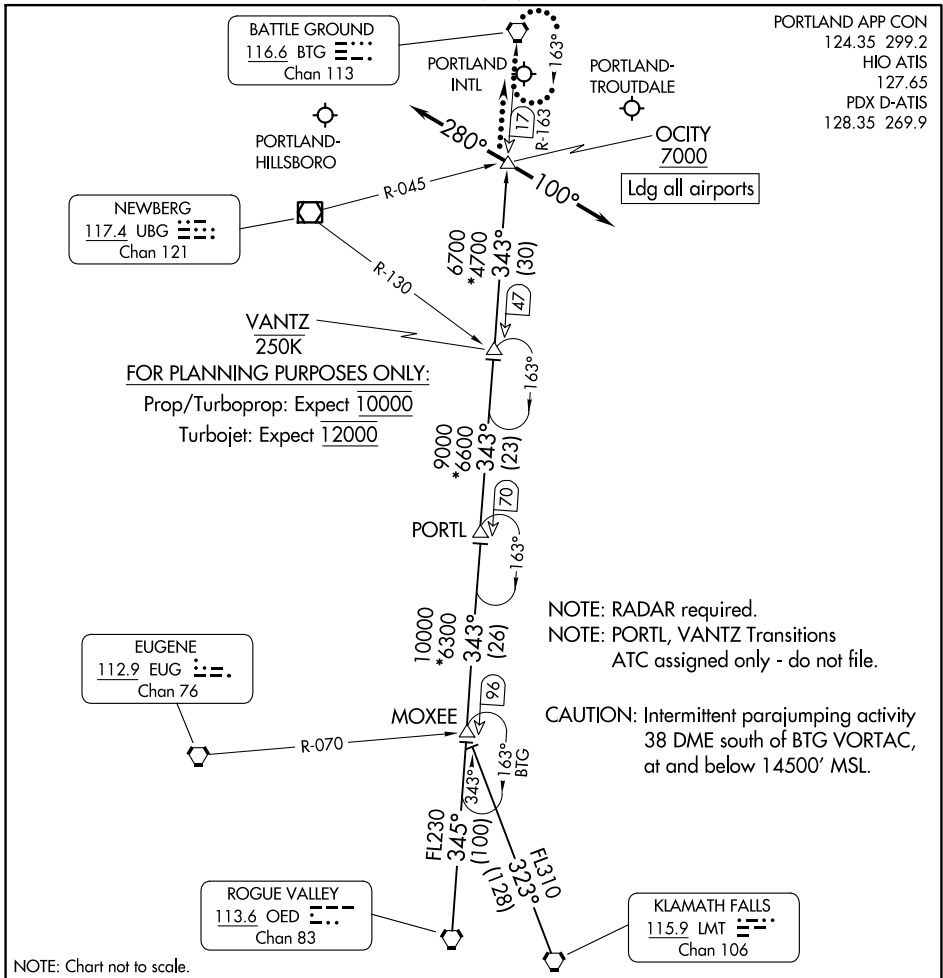


OCITY THREE ARRIVAL



ARRIVAL ROUTE DESCRIPTION

KLAMATH FALLS TRANSITION (LMT.OCITY3): From over LMT VORTAC on LMT R-323 to MOXEE, then on BTG R-163 to OCITY. Thence. . .

MOXEE TRANSITION (MOXEE.OCITY3): From over MOXEE on BTG R-163 to OCITY. Thence. . .

ROGUE VALLEY TRANSITION (OED.OCITY3): From over OED VORTAC on OED R-345 to MOXEE, then on BTG R-163 to OCITY. Thence. . .

PORTL TRANSITION (PORTL.OCITY3): From over PORTL on BTG R -163 to OCITY. Thence. . .

VANTZ TRANSITION (VANTZ.OCITY3): From over VANTZ on BTG R-163 to OCITY. Thence. . .

LANDING EAST: From OCITY heading 280°, expect RADAR vectors to final approach course.

LANDING WEST: From OCITY heading 100°, expect RADAR vectors to final approach course.

LOST COMMUNICATIONS: After OCITY, proceed direct BTG VORTAC and hold.

OCITY THREE ARRIVAL