

VORTAC FMG <b>117.9</b> Chan <b>126</b>	APP CRS <b>239°</b>	Rwy Idg TDZE Apt Elev <b>N/A</b> <b>N/A</b> <b>4415</b>
---	------------------------	--

# VOR-D

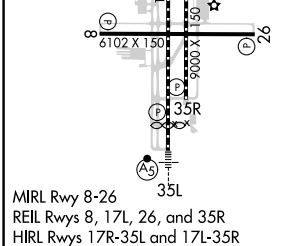
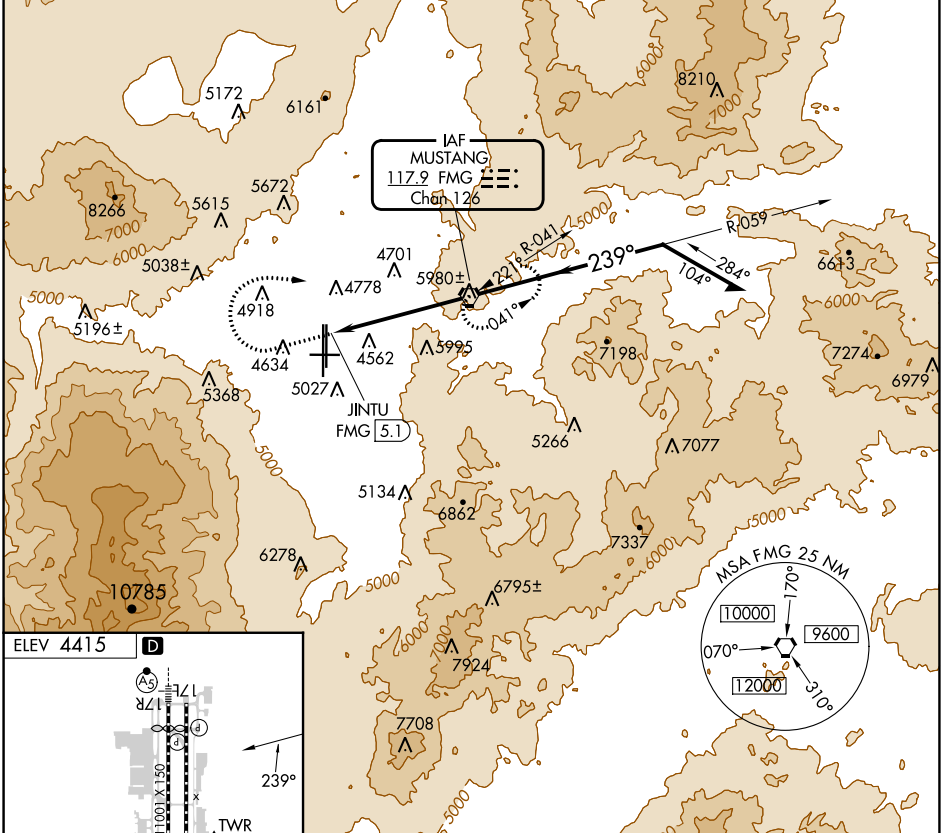
RENO/TAHOE INTL (RNO)

**⚠** Circling Rwy 8 NA at night.

**⚠** -13°C

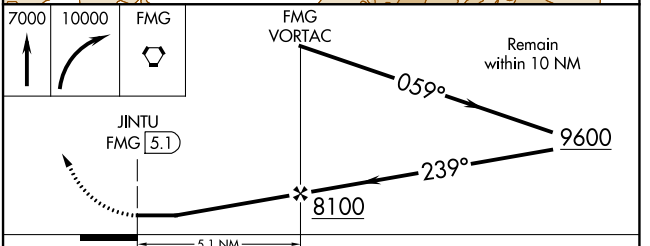
MISSED APPROACH: Climb to 7000 then climbing right turn to 10000 direct FMG VORTAC and hold, continue climb-in-hold to 10000.

D-ATIS <b>135.8 363.0</b>	NORCAL APP CON <b>119.2 279.55 126.3 353.9</b>	<b>RENO TOWER</b> <b>118.7 257.8</b>	GND CON <b>121.9 348.6</b>	CLNC DEL <b>124.9 370.85</b>	CPDLC
------------------------------	---	---	-------------------------------	---------------------------------	-------



ELEV 4415 **D**

FAF to MAP 5.1 NM	60	90	120	150	180
Knots	5:06	3:24	2:33	2:02	1:42
Min:Sec					



CATEGORY	A	B	C	D
<b>CIRCLING</b>	6300-1¼ 1885 (1900-1¼)	6300-1½ 1885 (1900-1½)	6460-3	2045 (2100-3)

SW-4, 05 SEP 2024 to 03 OCT 2024

SW-4, 05 SEP 2024 to 03 OCT 2024