

RIVERSIDE, CALIFORNIA

RNAV (GPS) RWY 14

WAAS CH 91363 W14A	APCH CRS 135°	Rwy ldg TDZE Arprt Elev	13,302 1536 1536
---------------------------------	-------------------------	-------------------------------	---

AL-348 (USAF)

MARCH ARB (KRIV)

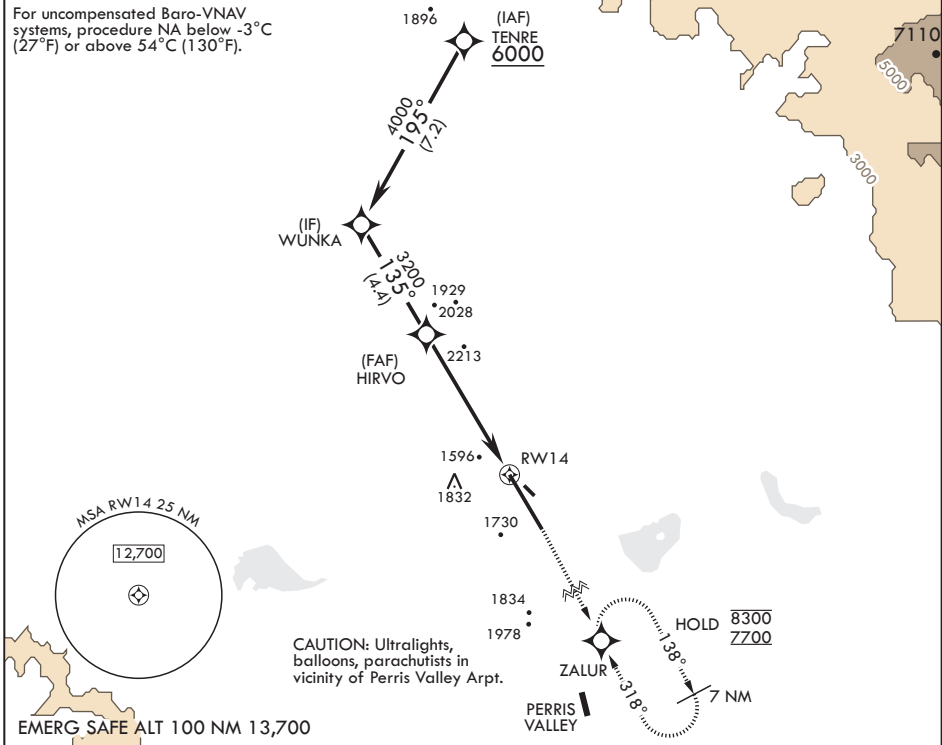
RNP APCH

MISSED APPROACH: Climb to 2300 then climbing right turn direct ZALUR and hold, continue climb in hold to 7700.

▼ * Circling NA NE of Rwy 14-32. Rapid rising terrain.

ATIS 134.75 239.05	APP CON/DEP CON* 133.5 306.975	TOWER 127.65 253.5	GND CON 121.75 335.8	CLNC DEL 127.775 268.7
------------------------------	--	------------------------------	--------------------------------	----------------------------------

For uncompensated Baro-VNAV systems, procedure NA below -3°C (27°F) or above 54°C (130°F).



TENRE 6000	WUNKA	HIRVO	RWY 14	ZALUR ELEV 1536	TDZE 1536
GP 2.70° TCH 56	4000	3200	2.8 NM to RWY 14	135°	
	195°	135°	5.6 NM	1565	
				3061 x 100	
				13.302 x 200	
				0.4% DOWN	
CATEGORY	A	B	C	D	
LPV DA	1756/40	220	(300-¾)		
LNAV/VNAV DA	2080-1⅝	544	(600-1⅝)		
LNAV MDA	2380/55 844 (900-1)	2380-1¼ 844 (900-1¼)	2380-2½ 844 (900-2½)	844 (900-2½)	
CIRCLING*	2380-1¼ 844 (900-1¼)	844 (900-1¼)	2380-2½ 844 (900-2½)	2440-3 904 (1000-3)	

HIRL Rwy 14-32

RIVERSIDE, CALIFORNIA

33°53'N - 117°16'W

MARCH ARB (KRIV)

Amdt 7 24MAR22
TERPS

RNAV (GPS) RWY 14

SW-3, 05 SEP 2024 to 03 OCT 2024

SW-3, 05 SEP 2024 to 03 OCT 2024