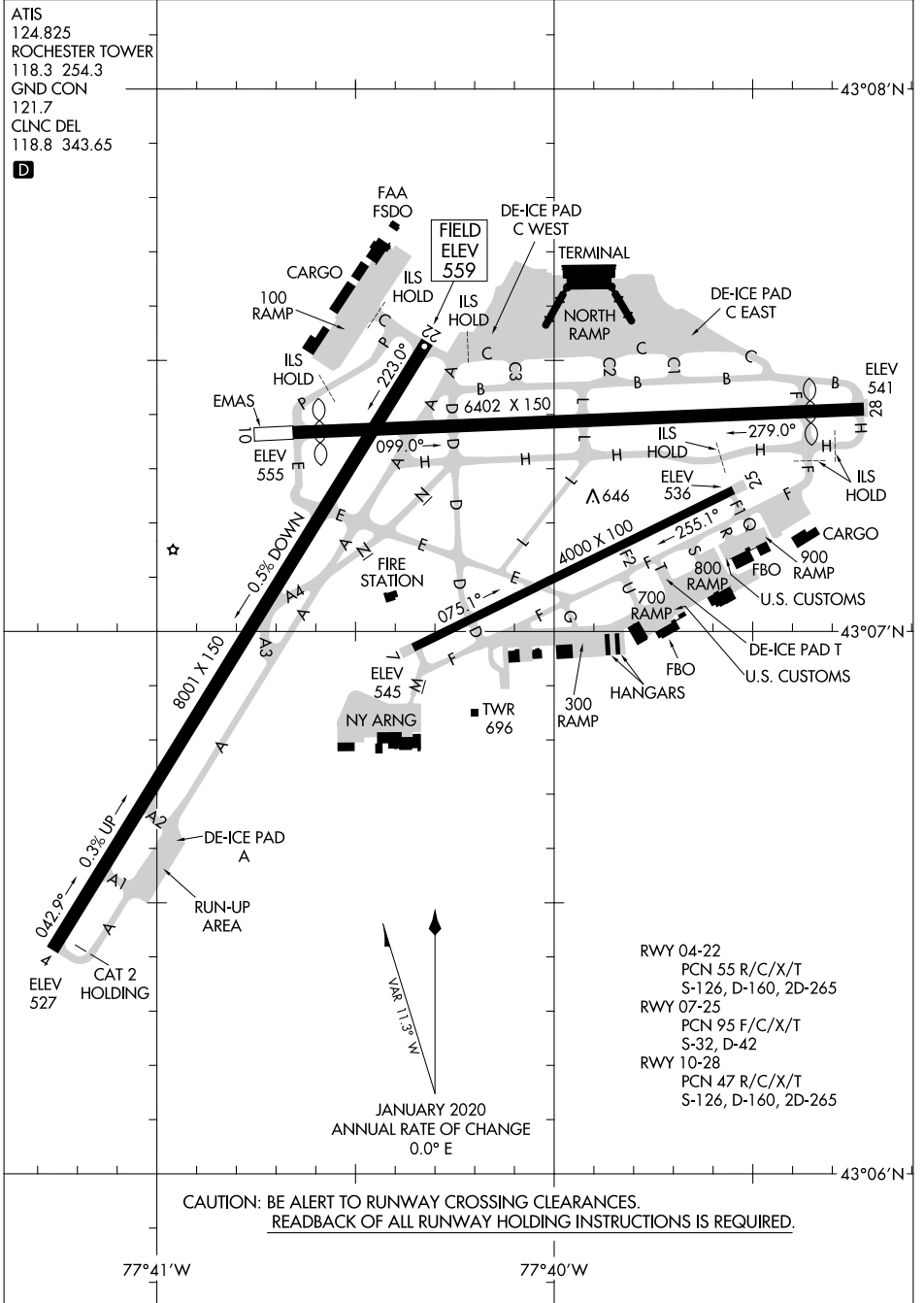


ATIS
 124.825
 ROCHESTER TOWER
 118.3 254.3
 GND CON
 121.7
 CLNC DEL
 118.8 343.65



NE-2, 05 SEP 2024 to 03 OCT 2024

NE-2, 05 SEP 2024 to 03 OCT 2024



**CAUTION: BE ALERT TO RUNWAY CROSSING CLEARANCES.
 READBACK OF ALL RUNWAY HOLDING INSTRUCTIONS IS REQUIRED.**