

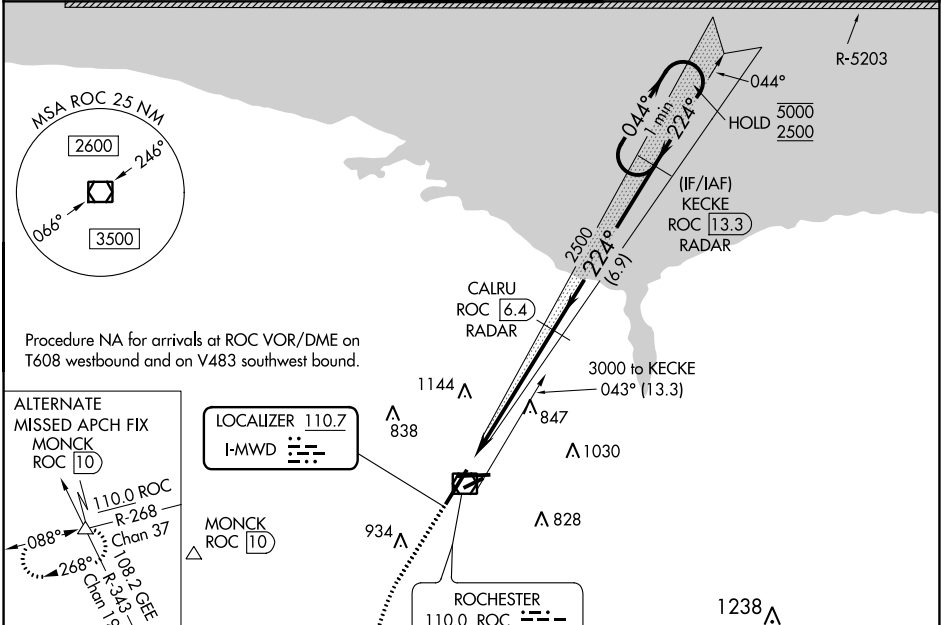
LOC I-MWD 110.7	APP CRS 224°	Rwy Idg 8001
		TDZE 559
		Apt Elev 559

ILS or LOC RWY 22

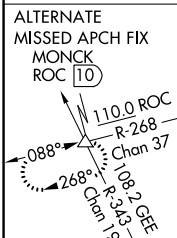
FREDERICK DOUGLASS/GREATER ROCHESTER INTL (ROC)

DME or RADAR required.		MALSR	MISSED APPROACH: Climb to 1000 then climbing left turn to 4000 direct GEE VOR/DME and hold.	
<p>▼ When R-5203 active hold in lieu NA. DME from ROC VOR/DME.</p> <p>▲ DME use requires simultaneous reception of I-MWD and ROC DME.</p> <p>* RVR 1800 authorized with use of FD or AP or HUD to DA.</p>				

ATIS 124.825	ROCHESTER APP CON 119.55 269.6	ROCHESTER TOWER 118.3 254.3	GND CON 121.7	CLNC DEL 118.8 343.65
------------------------	--	---------------------------------------	-------------------------	---------------------------------

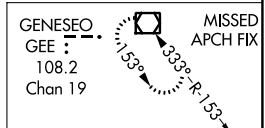


Procedure NA for arrivals at ROC VOR/DME on T608 westbound and on V483 southwest bound.

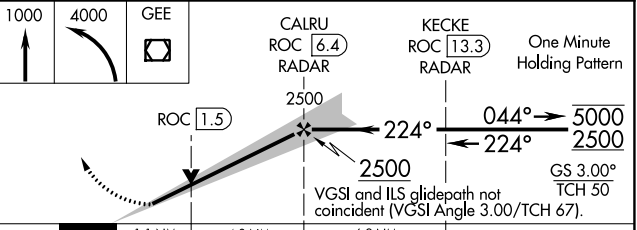
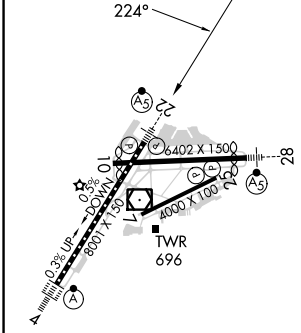


LOCALIZER 110.7
I-MWD

MONCK ROC 10



ELEV 559	D	TDZE 559
----------	----------	----------



TDZ/CL Rwy 4 REIL Rwy 7, 10 and 25 MRL Rwy 7-25 HIRL Rwy 4-22 and 10-28	FAF to MAP 5.9 NM	1000	4000	GEE	CALRU ROC 6.4 RADAR	KECKE ROC 13.3 RADAR	One Minute Holding Pattern
				ROC 1.5		2500	
				224°		044°	
				2500		5000	
				VGS1 and ILS glidepath not coincident (VGS1 Angle 3.00/TCH 67).		GS 3.00°	
				1.1 NM		4.8 NM	
				6.9 NM		2500	
				224°		224°	
				TCH 50		TCH 50	
				CATEGORY		CATEGORY	
				A		B	
				S-ILS 22 *		759/24 200 (200-1/2)	
				S-LOC 22		980/24 421 (500-1/2) 980/40 421 (500-3/4)	
				CIRCLING		1460-2 3/4 1460-3	
				1060-1 501 (600-1)		901 (1000-2 3/4) 901 (1000-3)	

ROCHESTER, NEW YORK
Amdt 9 20APR23

FREDERICK DOUGLASS/GREATER ROCHESTER INTL (ROC)
43°07'N-77°40'W
ILS or LOC RWY 22

NE-2, 05 SEP 2024 to 03 OCT 2024

NE-2, 05 SEP 2024 to 03 OCT 2024