


WAAS CH <b>86411</b> <b>W28A</b>	APP CRS <b>280°</b>	Rwy ldg TDZE Apt Elev	<b>5802</b> <b>550</b> <b>559</b>
--	------------------------	-----------------------------	---

# RNAV (GPS) RWY 28

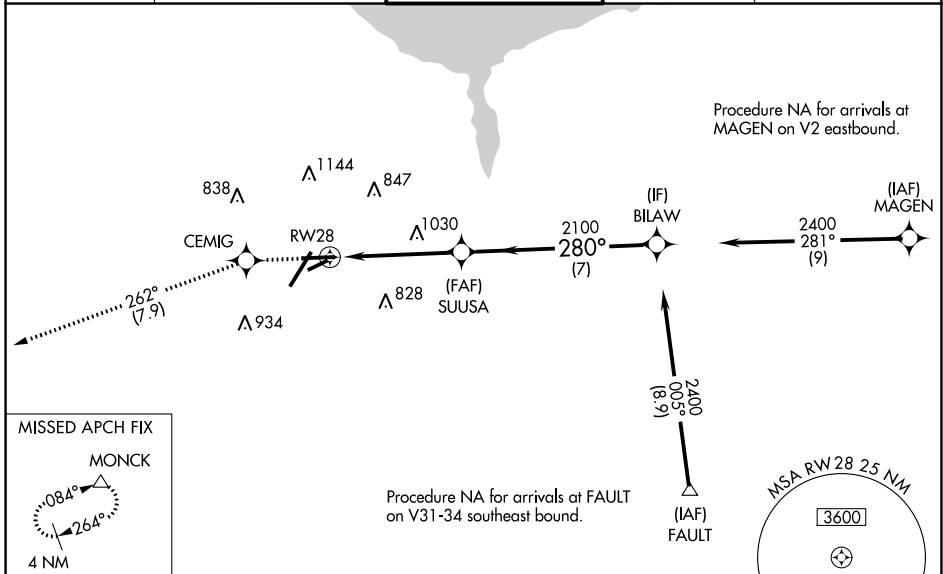
FREDERICK DOUGLASS/GREATER ROCHESTER INTL (ROC)

**⚠** For uncompensated Baro-VNAV systems, LNAV/VNAV NA below -18°C (0°F) or above 54°C (130°F).  
**⚠** DME/DME RNP -0.3 NA.  
 Multiple unshielded lights in final approach area.  
 For inop MALSR, increase LPV Cats A/B visibility to RVR 5500 and Cats C/D visibility to 2.  
 Helicopter visibility reduction below RVR 4000 NA.

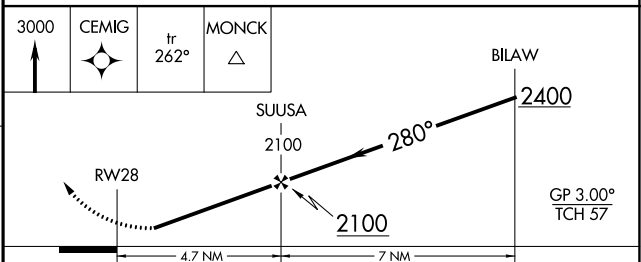
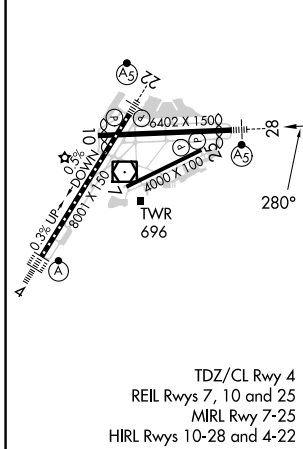
MALSR 

MISSED APPROACH: Climb to 3000 direct CEMIG and on track 262° to MONCK and hold.

ATIS <b>124.825</b>	ROCHESTER APP CON <b>119.55 269.6</b>	ROCHESTER TOWER <b>118.3 254.3</b>	GND CON <b>121.7</b>	CLNC DEL <b>118.8 343.65</b>
------------------------	--	---------------------------------------	-------------------------	---------------------------------



ELEV 559	<b>D</b>	TDZE 550
----------	----------	----------



CATEGORY	A	B	C	D
LPV DA		820/40	270 (300-¾)	
LNAV/VNAV DA		1067-1¼	517 (500-1¼)	
LNAV MDA	1280/40	730 (800-¾)	1280-15 <sup>6</sup> / <sub>8</sub>	730 (800-15 <sup>6</sup> / <sub>8</sub> )
<b>C</b> CIRCLING	1280-1	721 (800-1)	1500-2¾ 941 (1000-2¾)	1500-3 941 (1000-3)

# RNAV (GPS) RWY 28

NE-2, 05 SEP 2024 to 03 OCT 2024

NE-2, 05 SEP 2024 to 03 OCT 2024