

WAAS CH <b>70535</b> <b>W17A</b>	APP CRS <b>176°</b>	Rwy Idg <b>8061</b> TDZE <b>827</b> Apt Elev <b>827</b>
--	------------------------	---

# RNAV (GPS) RWY 17

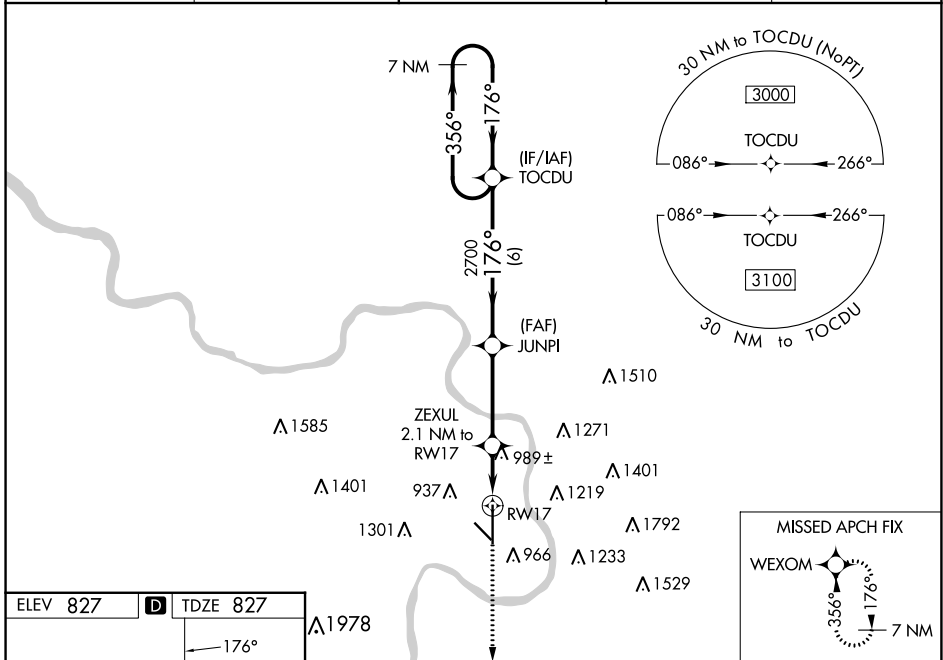
ROSECRANS MEML (STJ)

**⚠** For uncompensated Baro-VNAV systems, LNAV/VNAV NA below -20°C (-4°F) or above 54°C (130°F). DME/DME RNP-0.3 NA. Helicopter visibility reduction below ¼ SM NA. Baro-VNAV and VDP NA when using Kansas City Intl altimeter setting. When local altimeter setting not received, use Kansas City Intl altimeter setting and increase all DA 97 feet, and LPV visibility ½ mile all Cats, LNAV/VNAV visibility ¾ mile all Cats; increase all MDA 100 feet and LNAV Cat C/D/E visibility ¼ mile, Circling Cat C ½ mile, Cat D ¼ mile.

**ASR/PAR**

**MISSED APPROACH:**  
Climb to 3100 direct WEXOM and hold.

ATIS <b>125.05</b>	ST. JOSEPH APP CON * <b>120.35 360.8</b>	ST. JOSEPH TOWER * <b>126.9 (CTAF) 239.0</b>	GND CON <b>121.9</b>	UNICOM <b>122.95</b>
-----------------------	---	---	-------------------------	-------------------------

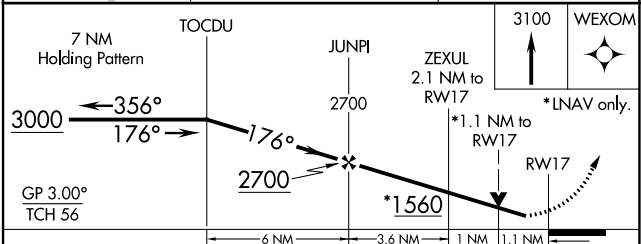


NC-3, 05 SEP 2024 to 03 OCT 2024

NC-3, 05 SEP 2024 to 03 OCT 2024

ELEV 827	<b>D</b> TDZE 827
----------	-------------------

MIRL Rwy 13-31 **Ⓛ**  
HIRL Rwy 17-35 **Ⓛ**  
REIL Rwy 17 and 35 **Ⓛ**



CATEGORY	A	B	C	D	E
LPV DA		1027-¾	200 (200-¾)		
LNAV/VNAV DA		1077-¾	250 (300-¾)		
LNAV MDA	1240-1	413 (500-1)	1240-1½	413 (500-1½)	
<b>C</b> CIRCLING	1400-1 573 (600-1)	1420-1 593 (600-1)	1620-2¼ 793 (800-2¼)	1640-2¾ 813 (900-2¾)	1760-3 933 (1000-3)