

(TIFTO8.MCI) 23278

TIFTO EIGHT DEPARTURE

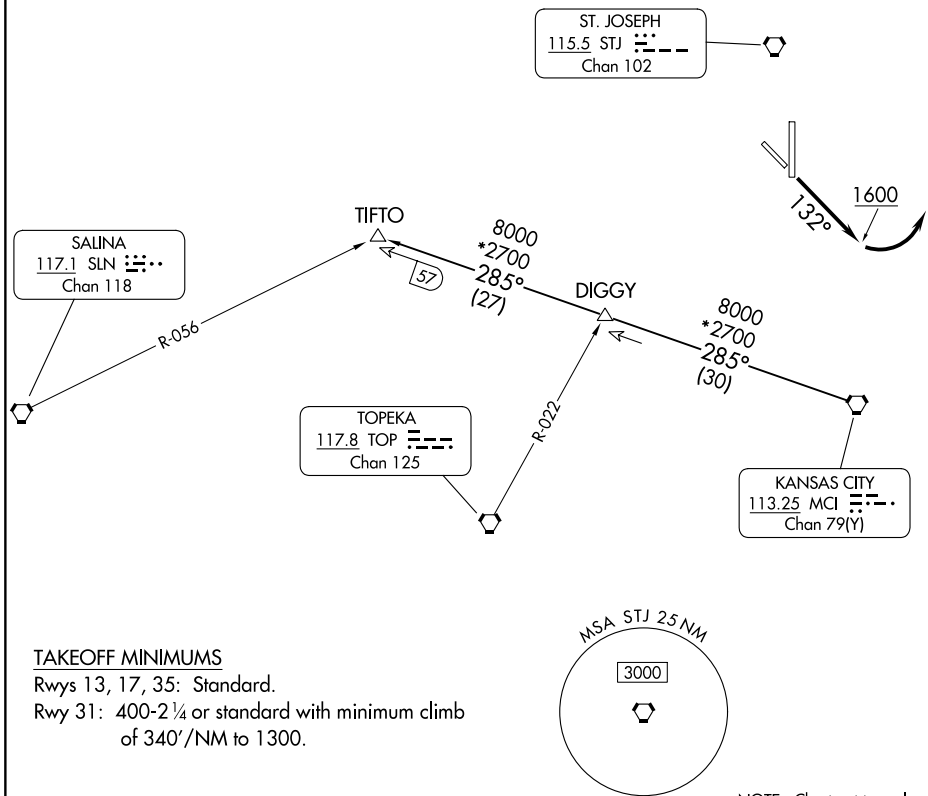
AL-359 (FAA)

ROSECRANS MEML (STJ)
ST. JOSEPH, MISSOURI

**TOP ALTITUDE:
10000**

RADAR and DME required.

ST. JOSEPH DEP CON ★
120.35 360.8
ATIS
125.05

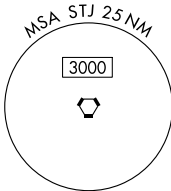


NC-3, 05 SEP 2024 to 03 OCT 2024

NC-3, 05 SEP 2024 to 03 OCT 2024

TAKEOFF MINIMUMS

Rwys 13, 17, 35: Standard.
Rwy 31: 400-2 ¼ or standard with minimum climb of 340'/NM to 1300.



NOTE: Chart not to scale

DEPARTURE ROUTE DESCRIPTION

TAKEOFF RUNWAY 13: Climb on heading 132° to 1600 before turning left, thenceclimb on assigned heading for RADAR vectors to appropriate route. Maintain 10000, expect filed altitude 10 minutes after departure.

TAKEOFF ALL OTHER RUNWAYS: Climb on assigned heading for RADAR vectors to appropriate route. Maintain 10000, expect filed altitude 10 minutes after departure.

TIFTO TRANSITION (TIFTO8.TIFTO): From over MCI VORTAC on MCI R-285 to TIFTO.

TIFTO EIGHT DEPARTURE

(TIFTO8.MCI) 05OCT23

ST. JOSEPH, MISSOURI
ROSECRANS MEML (STJ)