

VORTAC STJ <b>115.5</b> Chan <b>102</b>	APP CRS <b>167°</b>	Rwy Idg TDZE Apt Elev	<b>8061</b> <b>827</b> <b>827</b>
---	------------------------	-----------------------------	---

# VOR or TACAN RWY 17

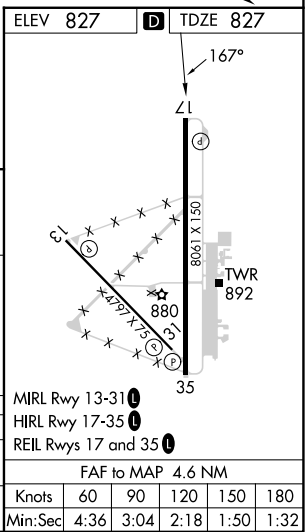
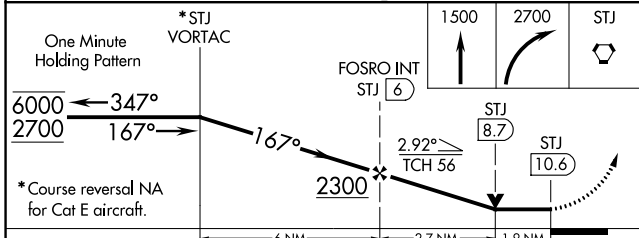
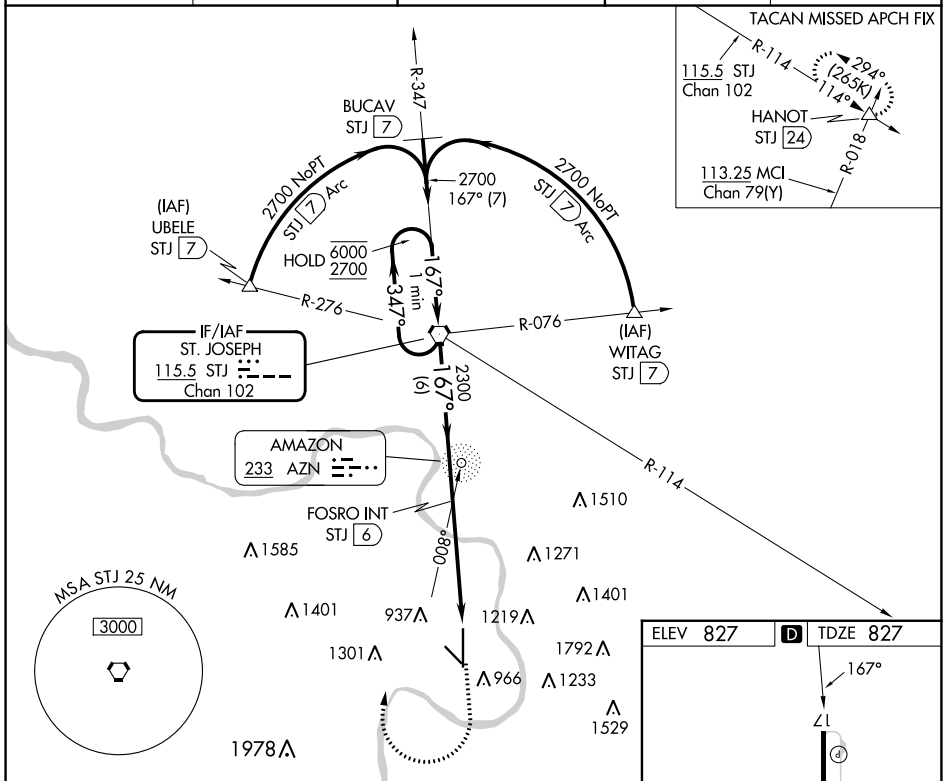
ROSECRANS MEML (STJ)

ADF or DME required.

**MISSED APPROACH TO STJ VORTAC NA for Cat E aircraft.**  
ASR/PAR

MISSED APPROACH: Climb to 1500 then climbing right turn to 2700 direct STJ VORTAC and hold. (TACAN aircraft climb to 2300 then climbing left turn to 3100 direct HANOT INT/STJ 24 DME and hold NW, LT, 114° inbound, GPS required).

ATIS <b>125.05</b>	ST. JOSEPH APP CON * <b>120.35 360.8</b>	ST. JOSEPH TOWER * <b>126.9 (CTAF) 239.0</b>	GND CON <b>121.9</b>	UNICOM <b>122.95</b>
-----------------------	---	---	-------------------------	-------------------------



NC-3, 05 SEP 2024 to 03 OCT 2024

NC-3, 05 SEP 2024 to 03 OCT 2024