

ROTRY FIVE DEPARTURE (RNAV)

AL-360 (FAA)

ST LOUIS LAMBERT INTL (STL)
ST. LOUIS, MISSOURI

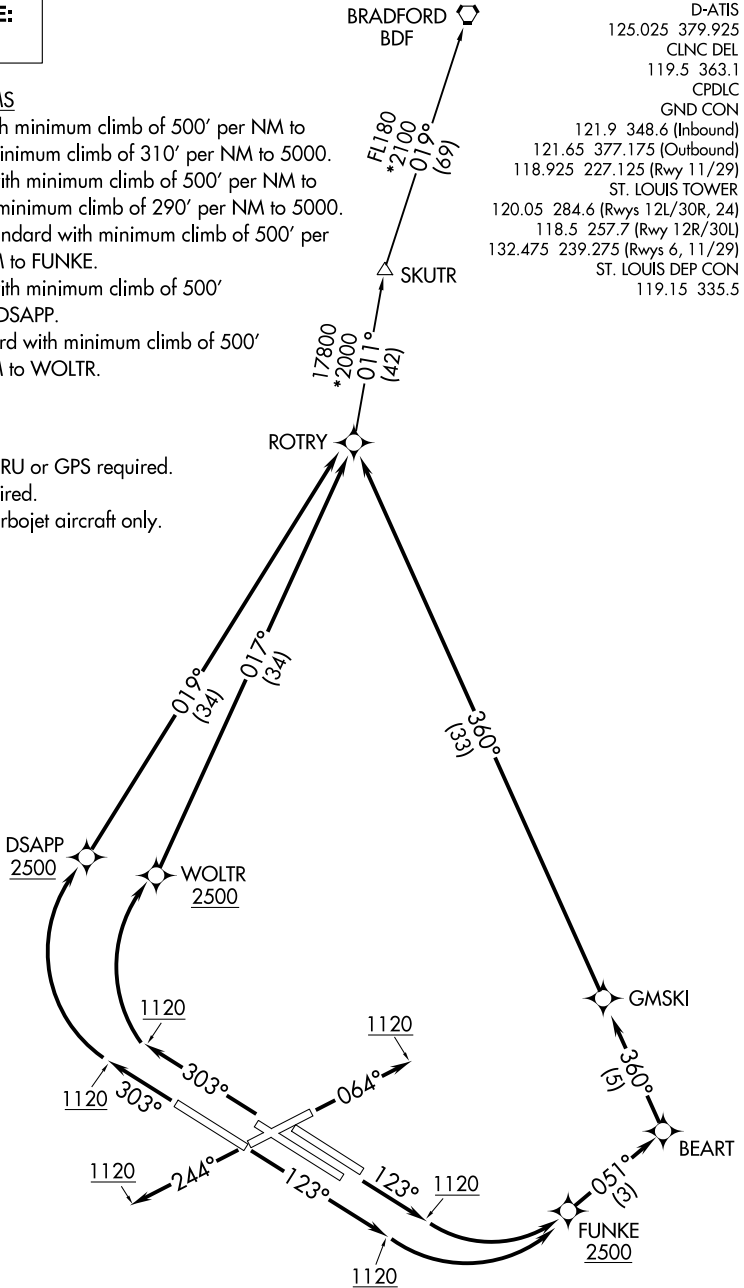
**TOP ALTITUDE:
5000**

TAKEOFF MINIMUMS

- Rwy 6: Standard with minimum climb of 500' per NM to 1120 then minimum climb of 310' per NM to 5000.
- Rwy 24: Standard with minimum climb of 500' per NM to 1120 then minimum climb of 290' per NM to 5000.
- Rwys 11, 12L/R: Standard with minimum climb of 500' per NM to FUNKE.
- Rwy 29: Standard with minimum climb of 500' per NM to DSAPP.
- Rwys 30L/R: Standard with minimum climb of 500' per NM to WOLTR.

- NOTE: RNAV 1.
- NOTE: DME/DME/IRU or GPS required.
- NOTE: RADAR required.
- NOTE: For use by turbojet aircraft only.

D-ATIS
125.025 379.925
CLNC DEL
119.5 363.1
CPDLC
GND CON
121.9 348.6 (Inbound)
121.65 377.175 (Outbound)
118.925 227.125 (Rwy 11/29)
ST. LOUIS TOWER
120.05 284.6 (Rwys 12L/30R, 24)
118.5 257.7 (Rwy 12R/30L)
132.475 239.275 (Rwys 6, 11/29)
ST. LOUIS DEP CON
119.15 335.5



(NARRATIVE ON FOLLOWING PAGE)

NOTE: Chart not to scale.

ROTRY FIVE DEPARTURE (RNAV)