


APP CRS	Rwy Idg	10553
123°	TDZE	540
	Apt Elev	618

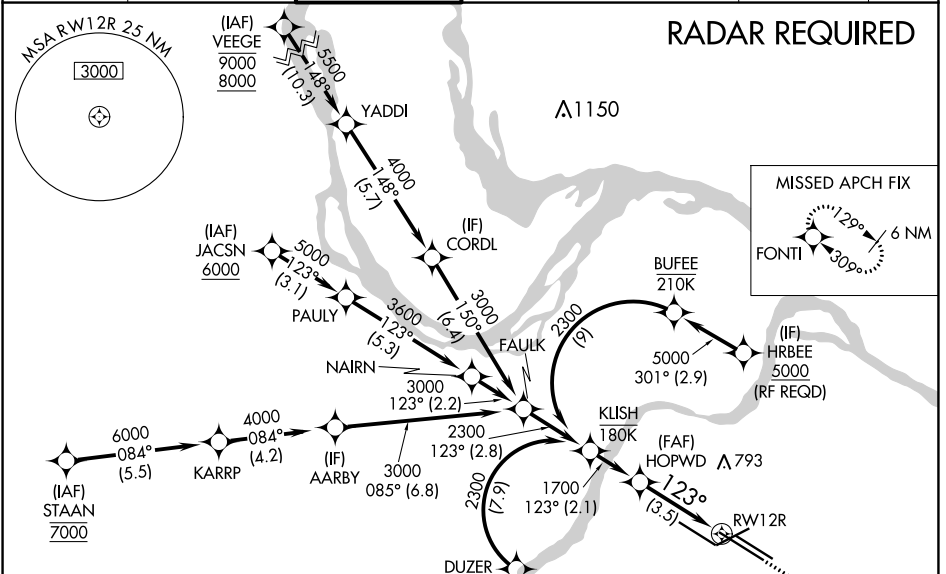
RNAV (RNP) Z RWY 12R

ST LOUIS LAMBERT INTL (STL)

▽ For uncompensated Baro-VNAV systems, procedure NA below -16°C (4°F) or above 54°C (130°F). GPS required. For inop ALS, increase RNP 0.30 all Cats visibility to 1½ SM. Simultaneous approach authorized with Rwy 11 except for arrivals at RRRIP and HRBEE. Use of FD or AP required during simultaneous operations.

MALSR

MISSED APPROACH: Climb to 5000 on track 123° to FONTI and hold, continue climb-in-hold to 5000.

D-ATIS 125.025 379.925	ST. LOUIS APP CON 132.125 360.6	ST. LOUIS TOWER 118.5 257.7	GND CON 121.9 348.6 (Inbound) 121.65 377.175 (Outbound) 118.925 227.125 (Rwy 11/29)	CLNC DEL 119.5 363.1	CPDLC
--	---	---------------------------------------	---	--------------------------------	-------

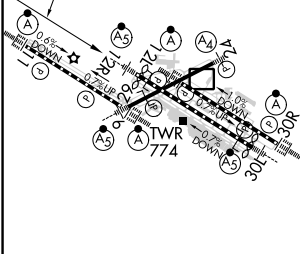


NC-3, 05 SEP 2024 to 03 OCT 2024

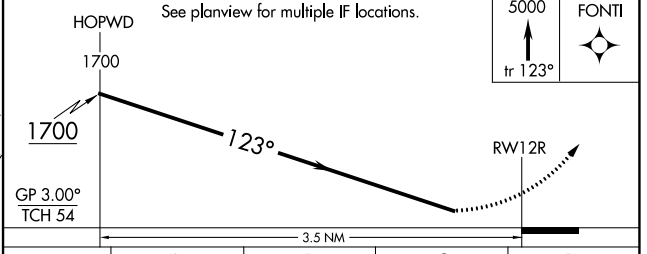
NC-3, 05 SEP 2024 to 03 OCT 2024

ELEV 618	D	TDZE 540
----------	----------	----------

Rwy 6-24 7603 X 150
 Rwy 11-29 9000 X 150
 Rwy 12L-30R 9013 X 150
 Rwy 12R-30L 11020 X 150



HOPWD See planview for multiple IF locations.
 5000 FONTI
 tr 123°



GP 3.00°				
TCH 54				
CATEGORY	A	B	C	D
RNP 0.30 DA	998/60 458 (400-1¼)			

AUTHORIZATION REQUIRED