


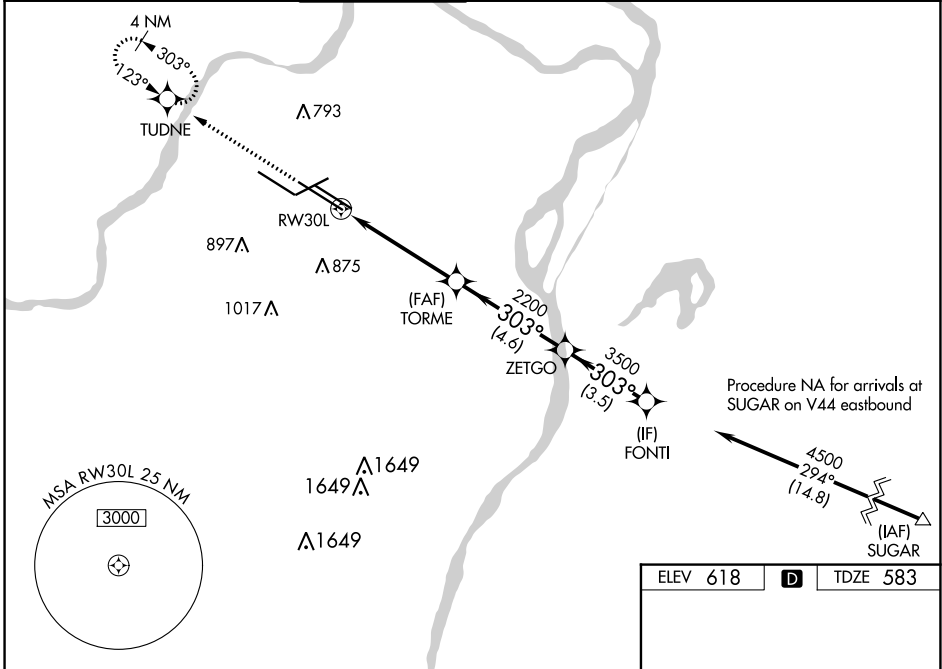
WAAS CH 99621 W30B	APP CRS 303°	Rwy Idg 10679 TDZE 583 Apt Elev 618
--	------------------------	--

RNAV (GPS) Y RWY 30L

ST LOUIS LAMBERT INTL (STL)




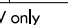



RNP APCH.	<p>▼ LNAV procedure NA during simultaneous operations. Use of FD or AP required during simultaneous operations. Simultaneous approach authorized with Rwy 29. For uncompensated Baro-VNAV systems, LNAV/VNAV NA below -18°C or above 54°C. For inop ALS, increase LNAV Cat C/D visibility to 1½ SM. # RVR 1800 authorized with use of FD or AP or HUD to DA.</p>	MALSR	 <p>MISSED APPROACH: Climb to 3000 direct TUDNE and hold, continue climb-in-hold to 3000.</p>
-----------	--	-------	--

D-ATIS 125.025 379.925	ST. LOUIS APP CON 132.125 360.6	ST. LOUIS TOWER 118.5 257.7	GND CON 121.9 348.6 (Inbound) 121.65 377.175 (Outbound) 118.925 227.125 (Rwy 11/29)	CLNC DEL 119.5 363.1	CPDLC
--	---	---------------------------------------	---	--------------------------------	-------



NC-3, 05 SEP 2024 to 03 OCT 2024

NC-3, 05 SEP 2024 to 03 OCT 2024

3000	TUDNE	FONTI	
			
*LNAV only			
			
*1.4 NM to RWY 30L	2200	3500	4500
1.4 NM	3.5 NM	4.6 NM	3.5 NM
GP 3.00° TCH 58			
CATEGORY	A	B	C
LPV DA#	783/24		200 (200-½)
LNAV/VNAV DA	974/35		391 (400-¾)
LNAV MDA	1100/24 517 (500-½)		1100/55 517 (500-1)

ELEV 618	D	TDZE 583
----------	----------	----------

Rwy 6-24 7603 X 150
Rwy 11-29 9000 X 150
Rwy 12L-30R 9013 X 150
Rwy 12R-30L 11020 X 150

HIRL all Rwys
TDZ/CL Rwys 11, 12L, 12R, 29, and 30R