

ST. LOUIS, MISSOURI

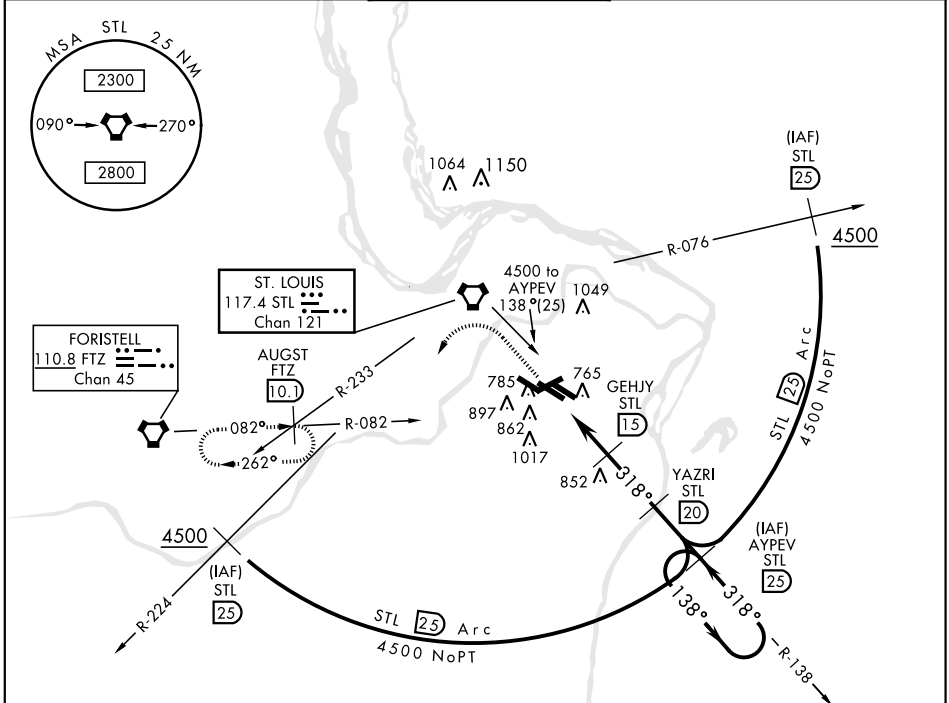
TACAN RWY 30L

| | | |
|---|-------------------------|---|
| VORTAC STL 117.4 Chan 121 | APCH CRS 318° | Rwy Ldg 10,818 TDZE 583 Arprt Elev 618 |
|---|-------------------------|---|

AL-360 [USAF]

ST. LOUIS LAMBERT INTL (KSTL)

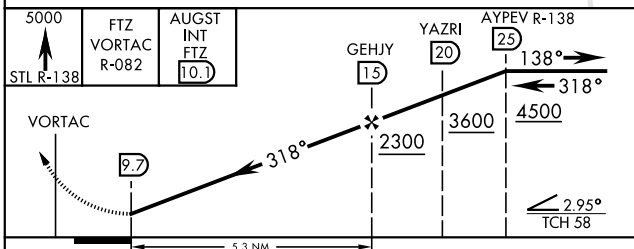
| | | | | | |
|--|---|---|--|--|--|
| <p>NA * Inoperative table does not apply.</p> | | <p>MALSR A5</p> | <p>MISSED APPROACH: Climb to 5000 via STL R-138 and FTZ VORTAC R-082 to AUGST INT/FTZ 10.1 DME and hold.</p> | | |
| <p>ATIS 125.05 379.925</p> | <p>ST. LOUIS APP CON 121.02 338.25</p> | <p>N 120.05 W 132.475 S 118.5 E 284.6 W 239.275 S 257.7</p> | <p>GND CON (Inbd) 121.9 348.6 (Outbd) 121.65 377.175 (West) 118.925 227.125</p> | <p>CLNC DEL 119.5 363.1</p> | |



NC-3, 05 SEP 2024 to 03 OCT 2024

NC-3, 05 SEP 2024 to 03 OCT 2024

EMERG SAFE ALT 100 NM 3500



| | |
|---|----------|
| ELEV 618 | TDZE 583 |
| <p>Rwy 6-24 7607 x 150 Rwy 11-29 9001 x 150 Rwy 12L-30R 9003 x 150 Rwy 12R-30L 11,019 x 200</p> | |
| <p>Rwy 12R Ldg 10,552' Rwy 30L Ldg 10,818'</p> | |
| | |
| <p>HIRL All Rwy REIL Rwy 12L TDZL/CL Rwy 11-29, 12L-30R, and 12R</p> | |

| CATEGORY | A | B | C | D | E |
|----------|----------------|-------------|------------------------|---------|--------------|
| S-30L * | 1100/50 | 517 (500-1) | 1100-1½ 517(500-1½) | 1100-1¾ | 517 (500-1¾) |
| CIRCLING | NOT AUTHORIZED | | | | |

ST. LOUIS, MISSOURI
Amdt 1 18200

38°45'N-90°22'W

ST. LOUIS LAMBERT INTL (KSTL)

TACAN RWY 30L