

LOC/DME I-SLE <b>110.3</b> Chan 40	APP CRS <b>313°</b>	Rwy Idg TDZE <b>213</b> Apt Elev <b>213</b>	<b>5811</b>
--	------------------------	---	-------------

# ILS or LOC Z RWY 31

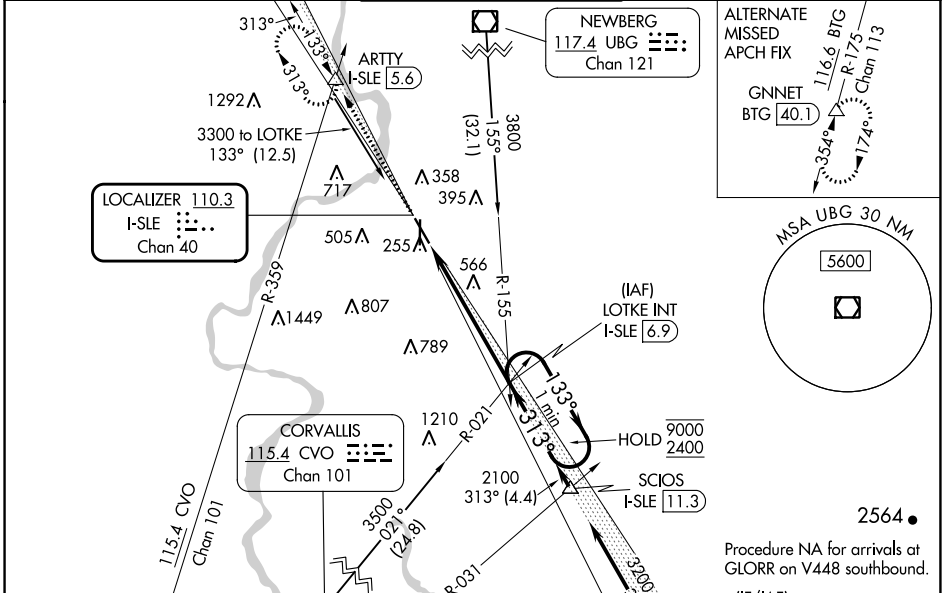
MCNARY FLD (SLE)

RADAR required for procedure entry at ARTY.

**⚠** Circling Rwy 16, 34 NA at night. For inop ALS, increase S-LOC 31 Cat C/D visibility to 2½ SM.  
**⚠** \*RVR 1800 authorized with use of FD or AP or HUD to DA (NA when using Mc Minnville altimeter setting).

MALSR  MISSED APPROACH: Climb to 4000 on I-SLE localizer NW course (313°) to ARTY INT/I-SLE 5.6 DME and hold, continue climb-in-hold to 4000.

ATIS <b>124.55</b>	SEATTLE CENTER <b>125.8 291.7</b>	SALEM TOWER ★ <b>119.1 (CTAF) 0 257.2</b>	GND CON <b>121.9</b>	UNICOM <b>122.95</b>
-----------------------	--------------------------------------	--	-------------------------	-------------------------



ELEV 213 TDZE 213

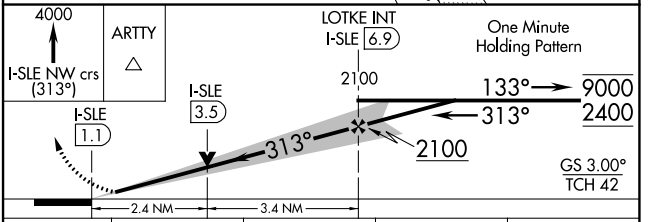
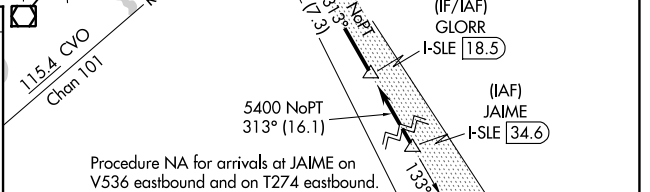
REIL Rwy 13, 16 and 34  
 MIRL Rwy 16-34  
 HIRL Rwy 13-31

TWR 270

FAF to MAP 5.8 NM

Knots	60	90	120	150	180
Min:Sec	5:48	3:52	2:54	2:19	1:56

**Ⓢ** CIRCLING



CATEGORY	A	B	C	D
S-ILS 31*	413/24 200 (200-½)			
S-LOC 31	1020/24 807 (900-½)	1020/40 807 (900-¾)	1020-1⅞ 807 (900-1⅞)	807 (900-1⅞)
<b>Ⓢ</b> CIRCLING	1020-1 807 (900-1)	1020-1¼ 807 (900-1¼)	1060-2½ 847 (900-2½)	1260-3 1047 (1100-3)

NW-1, 05 SEP 2024 to 03 OCT 2024

NW-1, 05 SEP 2024 to 03 OCT 2024