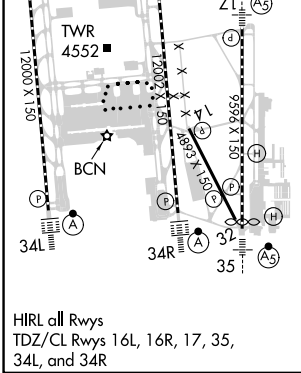
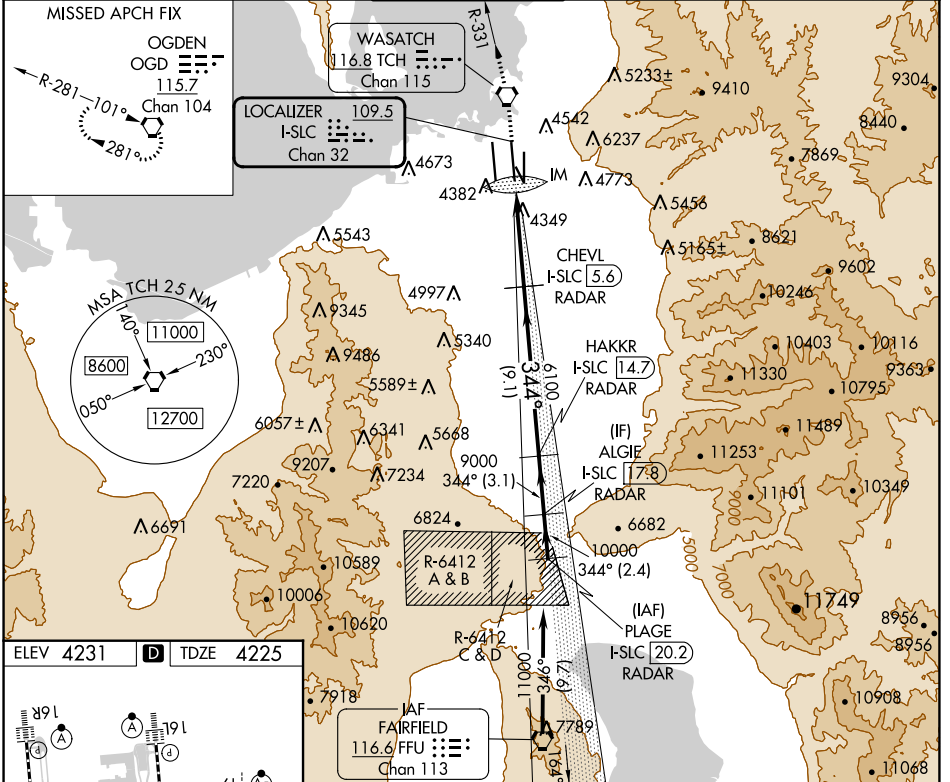


LOC/DME I-SLC 109.5 Chan 32	APP CRS 344°	Rwy Idg 12002 TDZE 4225 Apt Elev 4231
--	------------------------	--

ILS RWY 34R (SA CAT I)

SALT LAKE CITY INTL (SLC)

<p>Simultaneous approach authorized. Requires specific OPSPEC, MSPEC, or LOA approval.</p>		<p>ALSIF-2</p>	<p>MISSED APPROACH: Climb to 9000 direct TCH VORTAC and on TCH VORTAC R-331 to OGD VORTAC and hold.</p>		
D-ATIS 124.75 125.625	SALT LAKE CITY APP CON 125.7 284.6	SALT LAKE CITY TOWER 119.05 257.8	GND CON 123.775 348.6	CLNC DEL 127.3 379.975	CPDLC



9000	TCH	TCH R-331	OGD	VGSI and ILS glidepath not coincident (VGSI Angle 3.00/TCH 73).	PLAGE I-SLC 20.2 RADAR
↑					
				CHEVL I-SLC 5.6 RADAR	HAKKR I-SLC 14.7 RADAR
					ALGIE I-SLC 17.8 RADAR
				6100	9000
					10000
					344°
					GS 3.00° TCH 53
				1045°	5.7 NM 9.1 NM 3.1 NM 2.4 NM

CATEGORY	A	B	C	D
S-ILS 34R	RA 151/14 150 DA 4375			
SA CATEGORY I ILS - SPECIAL AIRCREW & AIRCRAFT CERTIFICATION REQUIRED				

SW-4, 05 SEP 2024 to 03 OCT 2024

SW-4, 05 SEP 2024 to 03 OCT 2024