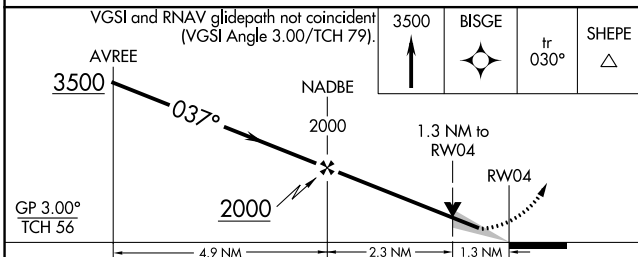
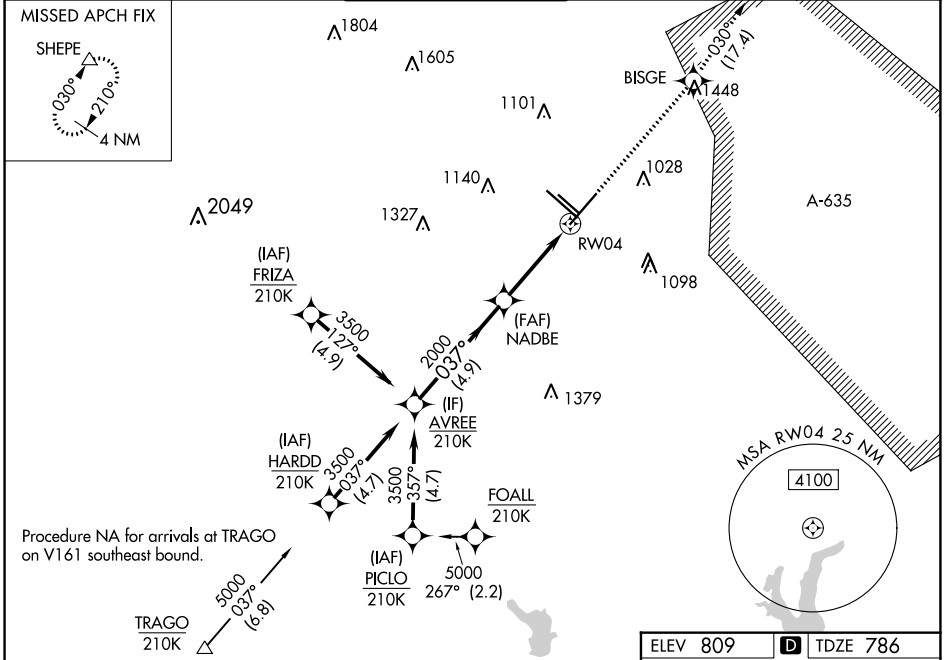


| | | | |
|--|------------------------|-----------------------------|---|
| WAAS CH 77613 W04A | APP CRS 037° | Rwy Idg TDZE Apt Elev | 8505 786 809 |
|--|------------------------|-----------------------------|---|

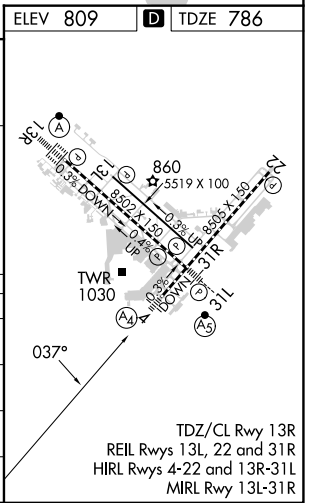
RNAV (GPS) Y RWY 4

SAN ANTONIO INTL (SAT)

| | | | | | |
|---|---|---|---|--------------------------|-------|
| RNP APCH - GPS. | | MALS | MISSED APPROACH: Climb to 3500 direct BISGE and track 030° to SHEPE and hold. | | |
| <p>▼ Circling NA northwest of Rws 4 and 13R. Inop table does not apply to LPV. For uncompensated Baro-VNAV systems, procedure NA below -5°C or above 54°C.</p> <p>▲ For inop ALS, increase LNAV/VNAV all Cats visibility to RVR 6000. Increase LNAV Cats A/B visibility to RVR 5500 and LNAV Cats C/D visibility to 1/2 SM.</p> | | | | | |
| D-ATIS 118.9 | SAN ANTONIO APP CON 125.1 307.0 | SAN ANTONIO TOWER 119.8 257.8 | GND CON 121.9 348.6 | CLNC DEL 126.7 | CPDLC |



| | | | | |
|--------------|-----------------------|-----------------------|-------------------------------|-------------------------------|
| CATEGORY | A | B | C | D |
| LPV DA | 986/40 | | 200 (200-3/4) | |
| LNAV/VNAV DA | 1201/50 | | 415 (400-1) | |
| LNAV MDA | 1280/40 | 494 (500-3/4) | 1280/60 | 494 (500-1 1/4) |
| CIRCLING | 1280-1 471 (500-1) | 1340-1 531 (600-1) | 1420-1 3/4 611 (700-1 3/4) | 1520-2 1/4 711 (800-2 1/4) |



SC-3, 05 SEP 2024 to 03 OCT 2024

SC-3, 05 SEP 2024 to 03 OCT 2024