

SAN ANTONIO, TEXAS

RNAV (GPS) RWY 16

WAAS CH 52296 W16A	APCH CRS 158°	Rwy ldg TDZE Arprt Elev	11,550 690 690
--------------------------	------------------	----------------------------	----------------------

AL-371 (USAF)

KELLY FLD (KSKF)

RNP APCH

▼ * When ALS inop, increase RVR to 40, vis to 3/4 miles.
** When ALS inop, increase RVR to 60, vis to 1 1/8 miles.

ALS-1



MISSED APPROACH: Climb to 1500 then climbing right turn to 3000 direct FITER and hold.

ATIS 120.45 273.5	SAN ANTONIO APP CON 118.05 353.5	KELLY TOWER 124.3 322.35	GND CON 121.8 289.4
----------------------	-------------------------------------	-----------------------------	------------------------

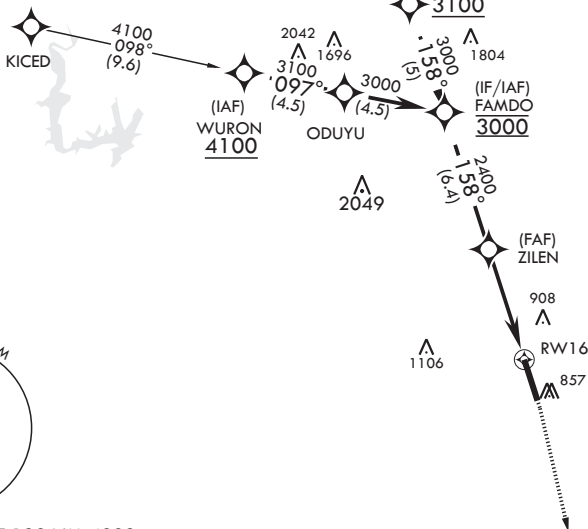
*** When ALS inop, increase CAT AB RVR to 55, and vis to 1 mile; CAT CDE vis to 1 7/8 miles.

**** Circling not authorized E of Rwy 16-34.

1985

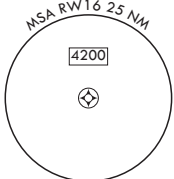
REUBE

For uncompensated BARO-VNAV systems, LNAV/VNAV NA below -16°C (3°F) or above 54°C (129°F).

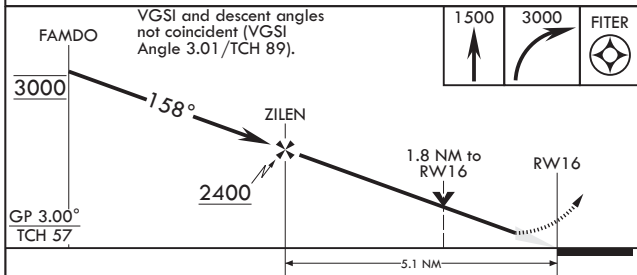


SC-3, 05 SEP 2024 to 03 OCT 2024

SC-3, 05 SEP 2024 to 03 OCT 2024



EMERG SAFE ALT 100 NM 4200

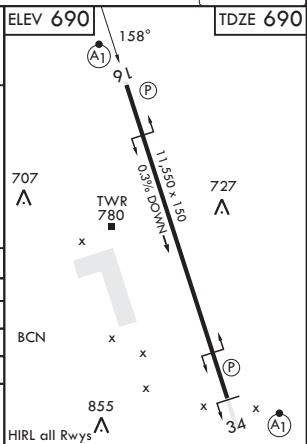


VGSI and descent angles not coincident (VGSI Angle 3.01/TCH 89).



ELEV 690 TDZE 690

CATEGORY	A	B	C	D	E
LPV DA*	890/24		200	(200-½)	
LNAV/VNAV DA**	1080/35		390	(400-¾)	
LNAV MDA***	1360/24 670 (700-½)		1360-1½	670 (700-1½)	
☐ CIRCLING****	1360-1 670 (700-1)		1360-1½ (700-1½)	1400-2¼ (800-2¼)	1900-3 (1300-3)



SAN ANTONIO, TEXAS
Amdt 2 23FEB23

29°23'N - 98°35'W

KELLY FLD (KSKF)

RNAV (GPS) RWY 16