

(TJANO1.TJANO) 24025

AL-371 (FAA)

KELLY FLD (SKF)
SAN ANTONIO, TEXAS

TJANO ONE DEPARTURE (RNAV)

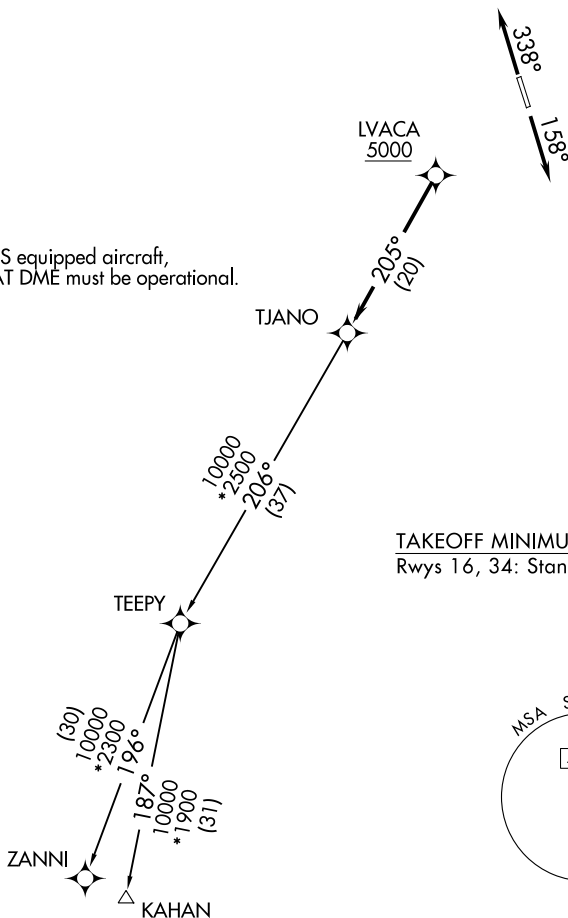
SAN ANTONIO DEP CON
125.7 290.225
ATIS
120.45 273.5
GND CON
121.8 289.4
KELLY TOWER
124.3 322.35

RNAV 1 - DME/DME IRU or GPS.

RADAR required.

**TOP ALTITUDE:
ASSIGNED BY ATC**

NOTE: For non-GPS equipped aircraft,
THX and SAT DME must be operational.



TAKEOFF MINIMUMS
Rwys 16, 34: Standard.

Note: Chart not to scale.



DEPARTURE ROUTE DESCRIPTION

TAKEOFF RUNWAY 16: Climb on heading 158° or as assigned by ATC,
for vectors to LVACA, thence . . .

TAKEOFF RUNWAY 34: Climb on heading 338° or as assigned by ATC,
for vectors to LVACA, thence . . .

. . . on track 205° to TJANO, then on Transition. Maintain ATC assigned altitude.

KAHAN TRANSITION (TJANO1.KAHAN)

ZANNI TRANSITION (TJANO1.ZANNI)

TJANO ONE DEPARTURE (RNAV)
(TJANO1.TJANO) 25JAN24

SAN ANTONIO, TEXAS
KELLY FLD (SKF)

SC-3, 05 SEP 2024 to 03 OCT 2024