

(PEBLE6.PEBLE) 23334

PEBLE SIX DEPARTURE

AL-373 (FAA)

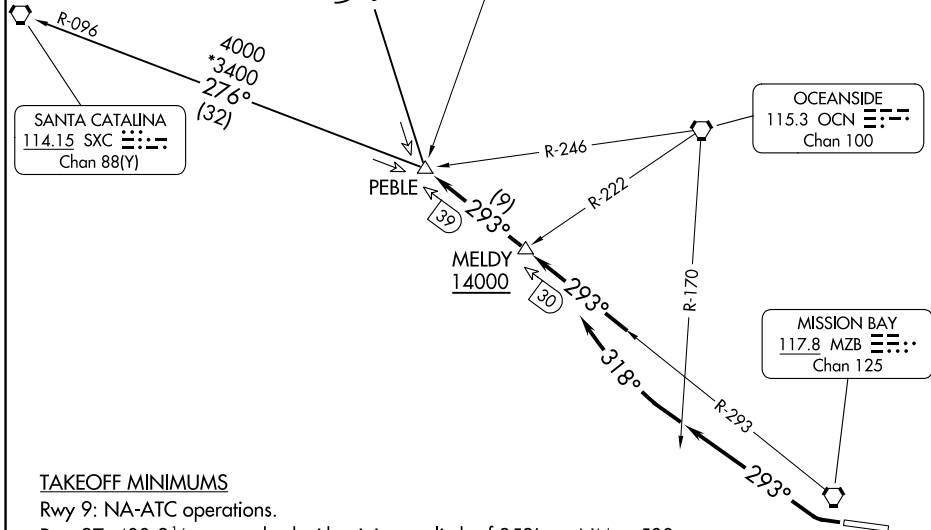
SAN DIEGO INTL (SAN)
SAN DIEGO, CALIFORNIA

**TOP ALTITUDE:
ASSIGNED BY ATC**

SEAL BEACH
115.7 SLI Chan 104

PARADISE
112.2 PDZ Chan 59

SOCAL DEP CON
WEST 119.6 363.1
D-ATIS
134.8
CLNC DEL
125.9
CPDLC
GND CON
123.9
LINDBERGH TOWER
118.3 338.225



TAKEOFF MINIMUMS

Rwy 9: NA-ATC operations.

Rwy 27: 400-2½ or standard with minimum climb of 353' per NM to 500.

NOTE: RADAR required.

NOTE: Aircraft climbing above 13000 expect RADAR vectors northwest bound prior to PEBLE INT.

NOTE: Chart not to scale.

DEPARTURE ROUTE DESCRIPTION

TAKEOFF RUNWAY 27: Climbing right turn heading 293° until crossing OCN VORTAC R-170, then turn right heading 318° to intercept MZB VORTAC R-293 to cross MELDY INT/MZB 30 DME at or above 14000 (or lower ATC assigned altitude) then on MZB R-293 to PEBLE INT/MZB 39 DME, thence. . . .

. . . . via (transition) or (assigned route). Maintain assigned altitude.

SANTA CATALINA TRANSITION (PEBLE6.SXC): From over PEBLE INT on SXC R-096 to SXC VORTAC.

SEAL BEACH TRANSITION (PEBLE6.SLI): From over PEBLE INT on SLI R-148 to SLI VORTAC.

PEBLE SIX DEPARTURE

(PEBLE6.PEBLE) 20AUG15

SAN DIEGO, CALIFORNIA
SAN DIEGO INTL (SAN)

SW-3, 05 SEP 2024 to 03 OCT 2024

SW-3, 05 SEP 2024 to 03 OCT 2024