


APP CRS	Rwy Idg	5700
196°	TDZE	54
	Apt Elev	56

RNAV (RNP) Z RWY 20R

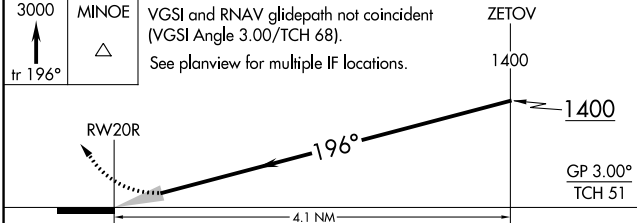
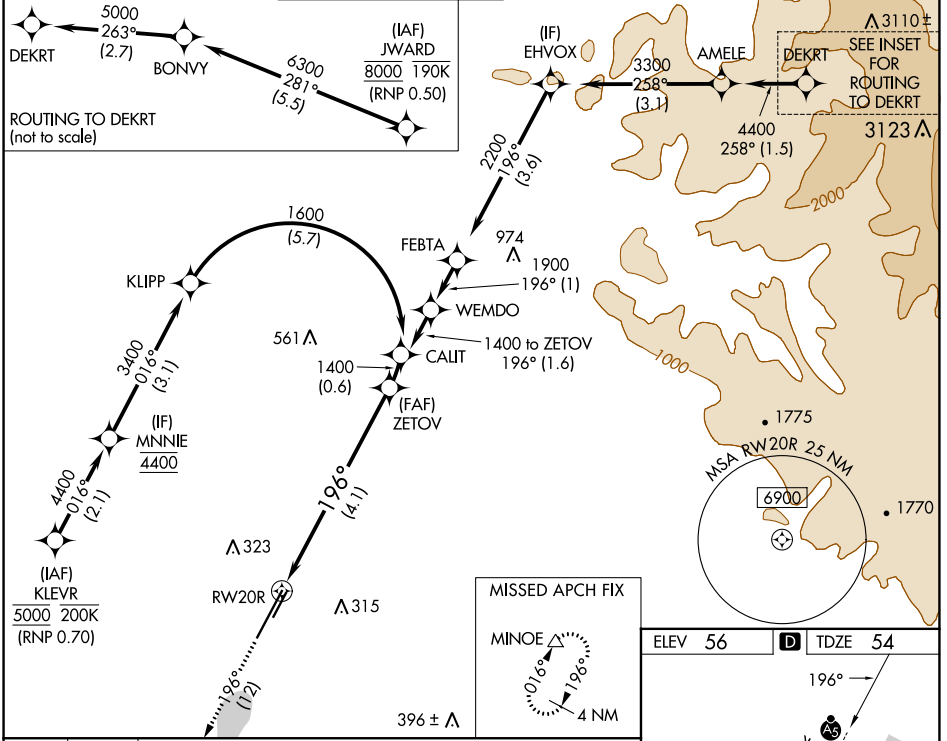
JOHN WAYNE/ORANGE COUNTY (SNA)

RNP AR APCH - GPS. Authorization required. From JWARD: min RNP 0.50. From KLEVR, RF, min RNP 0.70.

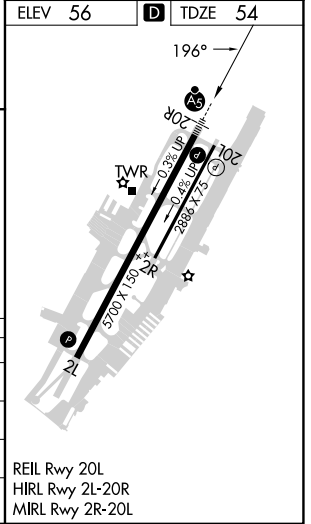
For uncompensated Baro-VNAV systems, procedure NA below 5°C or above 54°C.

MALSR  MISSED APPROACH: Climb to 3000 on track 196° to MINOE and hold, continue climb-in-hold.

D-ATIS	SOCAL APP CON	JOHN WAYNE TOWER ★	GND CON	CLNC DEL	CPDLC	UNICOM
126.0	121.3 263.1	126.8 (CTAF) 343.625	120.8	118.0		122.95



CATEGORY	A	B	C	D
RNP 0.11 DA		376/26	322 (400-½)	
RNP 0.15 DA		562/55	508 (600-1)	
RNP 0.30 DA		618-1¼	564 (600-1¼)	



AUTHORIZATION REQUIRED

SW-3, 05 SEP 2024 to 03 OCT 2024

SW-3, 05 SEP 2024 to 03 OCT 2024