

APP CRS	Rwy Idg	5700
016°	TDZE	56
	Apt Elev	56

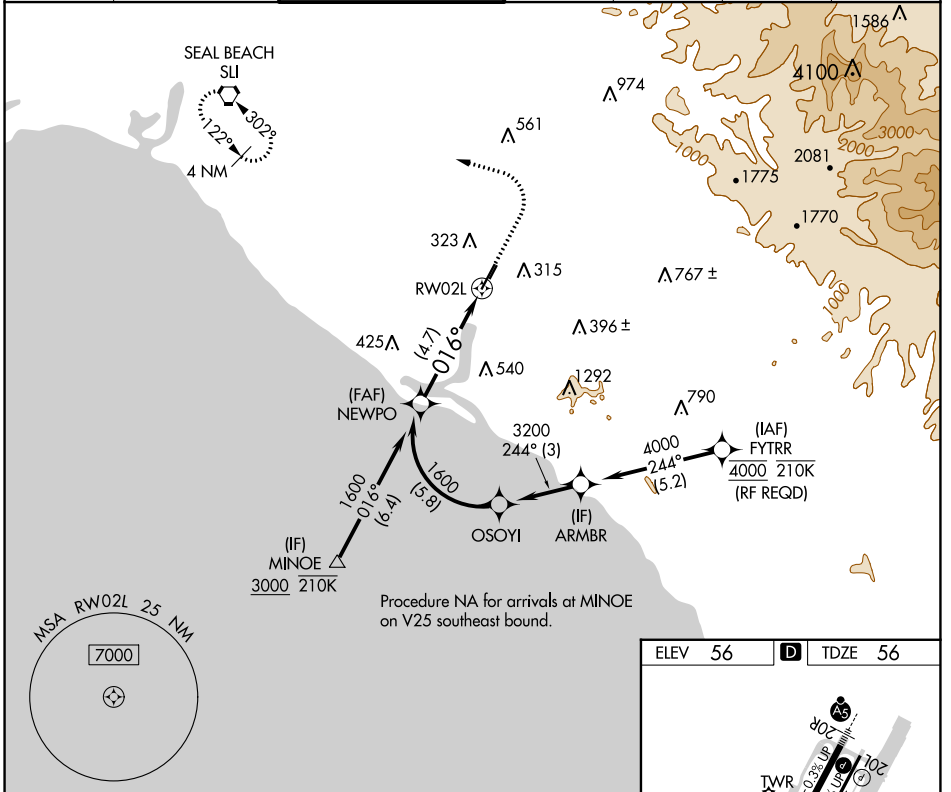
RNAV (RNP) Z RWY 2L

JOHN WAYNE/ORANGE COUNTY (SNA)

▽ For uncompensated Baro-VNAV systems, procedure NA below 5°C (41°F) or above 54°C (130°F). GPS required.

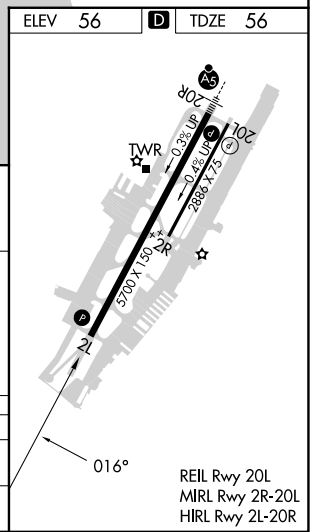
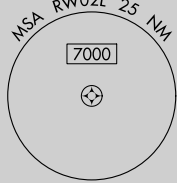
MISSED APPROACH: Climb to 800 then climbing left turn to 2600 direct SLI VORTAC and hold.

D-ATIS 126.0	SOCAL APP CON 121.3 263.1	JOHN WAYNE TOWER ★ 126.8 (CTAF) 0 343.625	GND CON 120.8	CLNC DEL 118.0	CPDLC	UNICOM 122.95
------------------------	-------------------------------------	---	-------------------------	--------------------------	-------	-------------------------



SW-3, 05 SEP 2024 to 03 OCT 2024

SW-3, 05 SEP 2024 to 03 OCT 2024



VGSI and RNAV glidepath not coincident (VGSI Angle 3.00/TCH 75).

NEWPO 1600

1600

016°

GP 3.00° TCH 55

See planview for multiple IF locations.

4.7 NM

RW02L

CATEGORY	A	B	C	D
RNP 0.30 DA		403-1 1/8	347 (400-1 1/8)	

AUTHORIZATION REQUIRED