

WAAS CH <b>97622</b> <b>W28A</b>	APP CRS <b>282°</b>	Rwy Idg TDZE <b>323</b> Apt Elev <b>378</b>	<b>4850</b>
--	------------------------	---	-------------

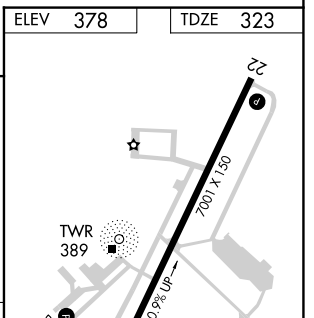
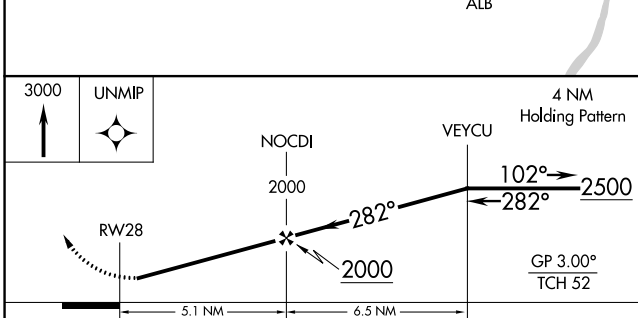
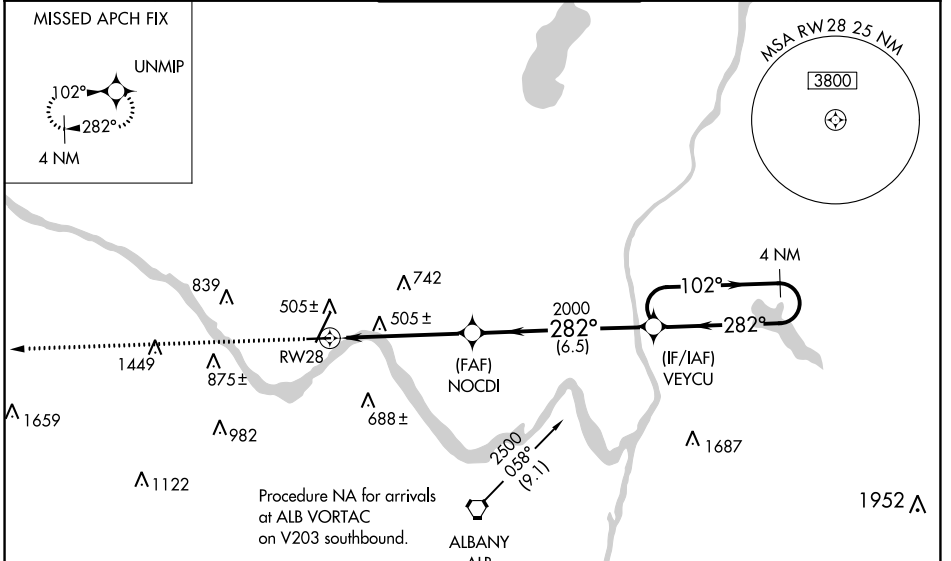
# RNAV (GPS) RWY 28

SCHENECTADY COUNTY (SCH)

**NA** Circling Rwy 10 NA at night. Baro-VNAV NA when using Albany altimeter setting. For uncompensated Baro-VNAV systems, LNAV/VNAV NA below -15°C (5°F) or above 54°C (130°F). DME/DME RNP-0.3 NA. Helicopter visibility reduction below 1 SM NA. When local altimeter setting not received, use Albany altimeter setting and increase all DA 33 feet and all MDA 40 feet; increase LNAV/VNAV all Cats visibility and LNAV Cat C/D visibility 1/8 mile.

**MISSED APPROACH:** Climb to 3000 direct UNMIP and hold.

AWOS-3 <b>119.275</b>	ALBANY APP CON <b>132.825 263.075</b>	<b>SCHENECTADY TOWER ★</b> <b>121.3 (CTAF) 321.1</b>	GND CON <b>121.9</b>	UNICOM <b>122.95</b>
--------------------------	--	---	-------------------------	-------------------------



CATEGORY	A	B	C	D
LPV DA		618-1	295 (300-1)	
LNAV/VNAV DA		774-1½	451 (400-1½)	
LNAV MDA	820-1 497 (500-1)		820-1¾ 497 (500-1¾)	
CIRCLING	880-1 502 (600-1)	940-1 562 (600-1)	1120-2¼ 742 (800-2¼)	1320-3 942 (1000-3)

ELEV 378 | TDZE 323

REIL Rwy 28  
HIRL Rwy 4-22  
MIRL Rwy 10-28

NE-2, 05 SEP 2024 to 03 OCT 2024

NE-2, 05 SEP 2024 to 03 OCT 2024