

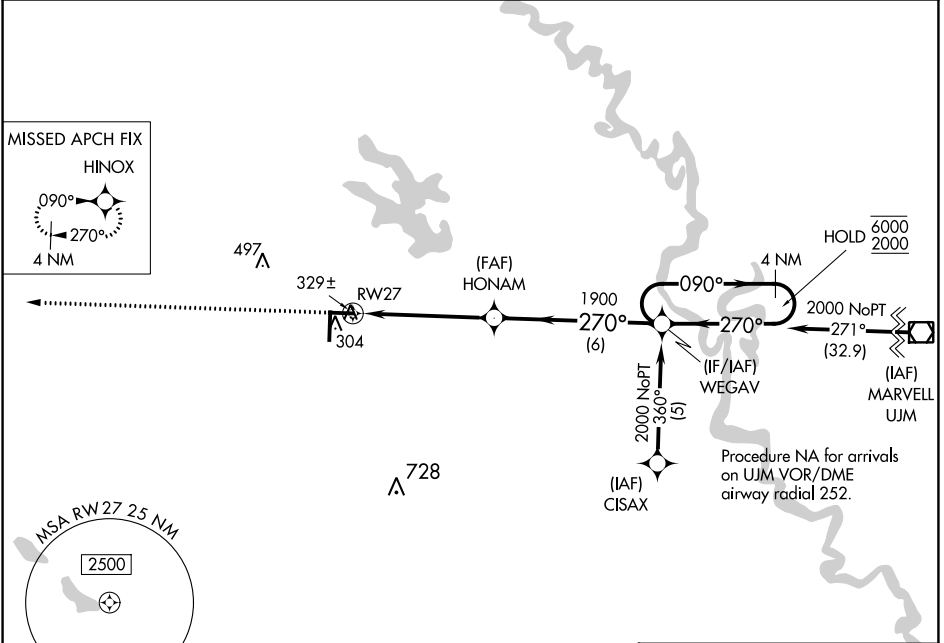
APP CRS **270°**  
 Rwy Idg **5002**  
 TDZE **222**  
 Apt Elev **224**

**RNAV (GPS) RWY 27**  
 STUTTGART MUNI CARL HUMPHREY FLD (SGT)

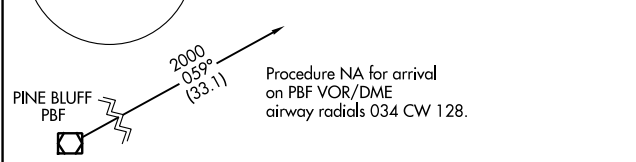
|  |  |   |   |
|--|--|---|---|
| RNP APCH - GPS.  |  | MISSED APPROACH: Climb to 2000 direct HINOX and hold. |   |
| ▼<br>▲ Rwy 27 helicopter visibility reduction below ¾ SM NA. |  | AWOS-3PT<br><b>119.025</b>                            | LITTLE ROCK APP CON<br><b>135.4 353.6</b> |
|  |  | CLNC DEL<br><b>123.7</b>                              | UNICOM<br><b>122.8 (CTAF) 0</b>           |



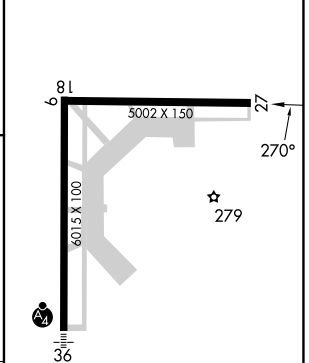
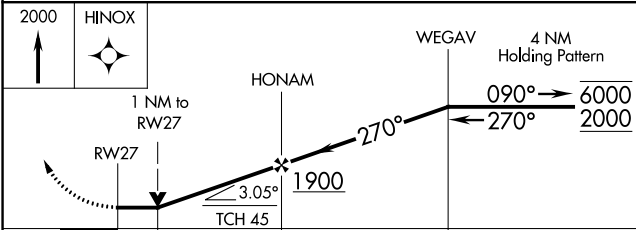
SC-1, 05 SEP 2024 to 03 OCT 2024



SC-1, 05 SEP 2024 to 03 OCT 2024



ELEV 224      TDZE 222



|          |                      |                      |                        |                      |
|----------|----------------------|----------------------|------------------------|----------------------|
| CATEGORY | A                    | B                    | C                      | D                    |
| LNAV MDA | 580-1 358 (400-1)    |                      |                        |                      |
| CIRCLING | 660-1<br>436 (500-1) | 680-1<br>456 (500-1) | 760-1½<br>536 (600-1½) | 860-2<br>636 (700-2) |

MIRL Rwy 18-36 and 9-27 0  
 REIL Rwy 18 and 27 0