

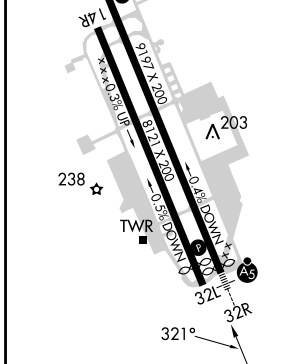
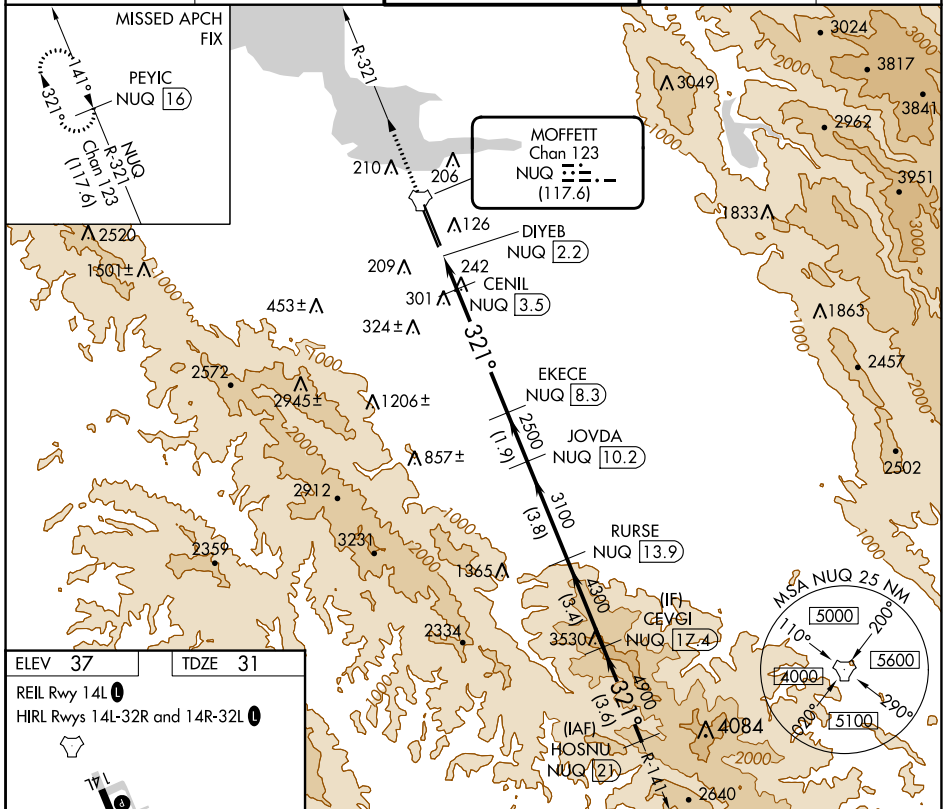
TACAN NUQ Chan 123 (117.6)	APP CRS 321°	Rwy ldg TDZE Apt Elev	9006 31 37
------------------------------------------------	------------------------	-----------------------------	---------------------------------------

TACAN RWY 32R

MOFFETT FEDERAL AIRFIELD (NUQ)

RADAR required for procedure entry.		MALSR	MISSED APPROACH: Climb to 3200 on NUQ TACAN R-321 to PEYIC/16 DME and hold.
<p>For inop ALS, increase Cat E visibility to 1 1/2 SM.</p>			

ATIS 124.175 283.0	NORCAL APP CON 120.1 290.25	MOFFETT TOWER ★ 119.55 (CTAF) 259.65	GND CON 121.85 278.95	CLNC DEL 296.75
------------------------------	---------------------------------------	------------------------------------------------	---------------------------------	---------------------------



ELEV 37	TDZE 31	REIL Rwy 14L					HIRL Rws 14L-32R and 14R-32L				
		3200	PEYIC NUQ [16]	VGSI and descent angles not coincident (VGSI Angle 3.00/TCH 55).			CEVGI NUQ [17.4]	HOSNU NUQ [21]			
		NUQ R-321	EKECE NUQ [8.3]	JOVDA NUQ [10.2]	RURSE NUQ [13.9]	CEVGI NUQ [17.4]	HOSNU NUQ [21]				
		DIYEB NUQ [2.2]	CENIL NUQ [3.5]	3.48° TCH 55	720	2500	3100	4300	4900	5500	
		0.5	1.3 NM	4.8 NM	1.9 NM	3.8 NM	3.4 NM	3.6 NM			
CATEGORY	A	B	C	D	E						
S-32R	560-1/2	529 (600-1/2)	560-1	529 (600-1)							
CIRCLING	560-1 523 (600-1)	600-1 563 (600-1)	620-1/2 583 (600-1/2)	780-2/2 743 (800-2/2)	940-3 903 (1000-3)						

SW-2, 05 SEP 2024 to 03 OCT 2024

SW-2, 05 SEP 2024 to 03 OCT 2024