

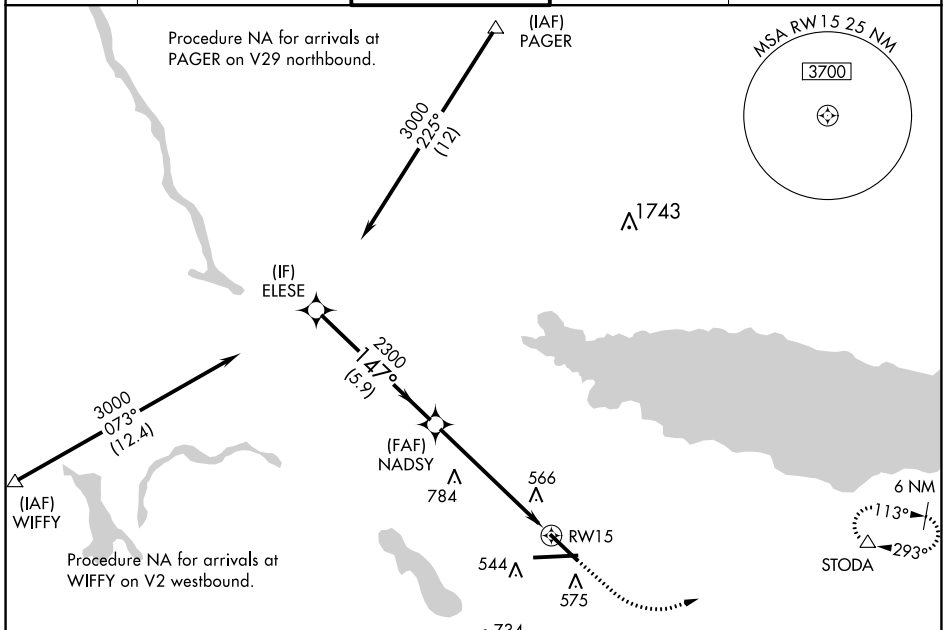
WAAS CH 50117 W15A	APP CRS 147°	Rwy Idg TDZE Apt Elev	7500 417 421
--	------------------------	-----------------------------	---

RNAV (GPS) RWY 15

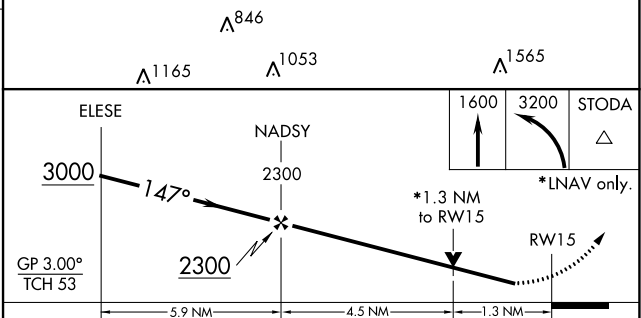
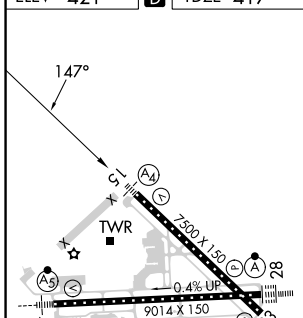
SYRACUSE HANCOCK INTL (SYR)

RNP APCH.	MALS 	MISSED APPROACH: Climb to 1600 then climbing left turn to 3200 direct STODA and hold, continue climb-in-hold to 3200.
<p> Rwy 15 helicopter visibility reduction below 3/4 SM NA.</p> <p> Inop table does not apply to LPV DA all Cats. For uncompensated Baro-VNAV systems, LNAV/VNAV NA below -19°C or above 54°C.</p>		

ATIS 124.225	SYRACUSE APP CON 126.125 269.125	SYRACUSE TOWER 120.3 239.0	GND CON 121.7 348.6	CLNC DEL 125.05 257.775
------------------------	--	--------------------------------------	-------------------------------	-----------------------------------



ELEV 421	D	TDZE 417
----------	----------	----------



CATEGORY	A	B	C	D
LPV DA		667-3/4	250 (300-3/4)	
LNAV/VNAV DA		894-1/8	477 (500-1/8)	
LNAV MDA	880-3/4	463 (500-3/4)	880-1/8	463 (500-1/8)
C CIRCLING	900-1 479 (500-1)	920-1 499 (500-1)	1020-1/2 599 (600-1/2)	1180-2/2 759 (800-2/2)

TDZ/CL Rwy 28
HIRL Rwy 10-28 and 15-33

NE-2, 05 SEP 2024 to 03 OCT 2024

NE-2, 05 SEP 2024 to 03 OCT 2024